

**VURSA kd SERIES
SHOWER STALL**

Patent No.: US 8,918,927 B1

Oasis

SH3P-4834LS ABF



MULTI-PIECE MODEL



SH3P-4834 (3-piece / single seat)

Rough-In Dimensions

48" wide x 35-1/4" deep x 76-3/4" high (with 4-inch dam)

Finished Dimensions

48" wide x 34" deep x 75-1/2" high (with 4-inch dam)

Unit Features

- Three - Piece Fiberglass Composite Construction
- Sanitary Grade Polyester Gelcoat Surface
- Front-Side Installation With Minimal Sealant Requirements
- 3-3/8" Dia. Center Drain
- Anti-Drip Front Dam Ledge
- Corner Accessory Ledge
- Generous, Multi-Level Back Wall Shelving
- Single, Ergonomic Right or Left Hand Seat
- Ergonomic Corner Foot Rest For Shaving
- Wall Design Accommodates Grab Bar Applications
- Textured Floor Pattern
- 1/2-inch Balsa Wood Core Floor Structure



Home Innovation
LAB CERTIFIED™

Special Notes

- Optional ABF Model (provides 3-inches of drain clearance)
- 'QwikClic' Technology
- Factory Applied Reinforcement Packages Available
- Factory Applied Bar Packages Available

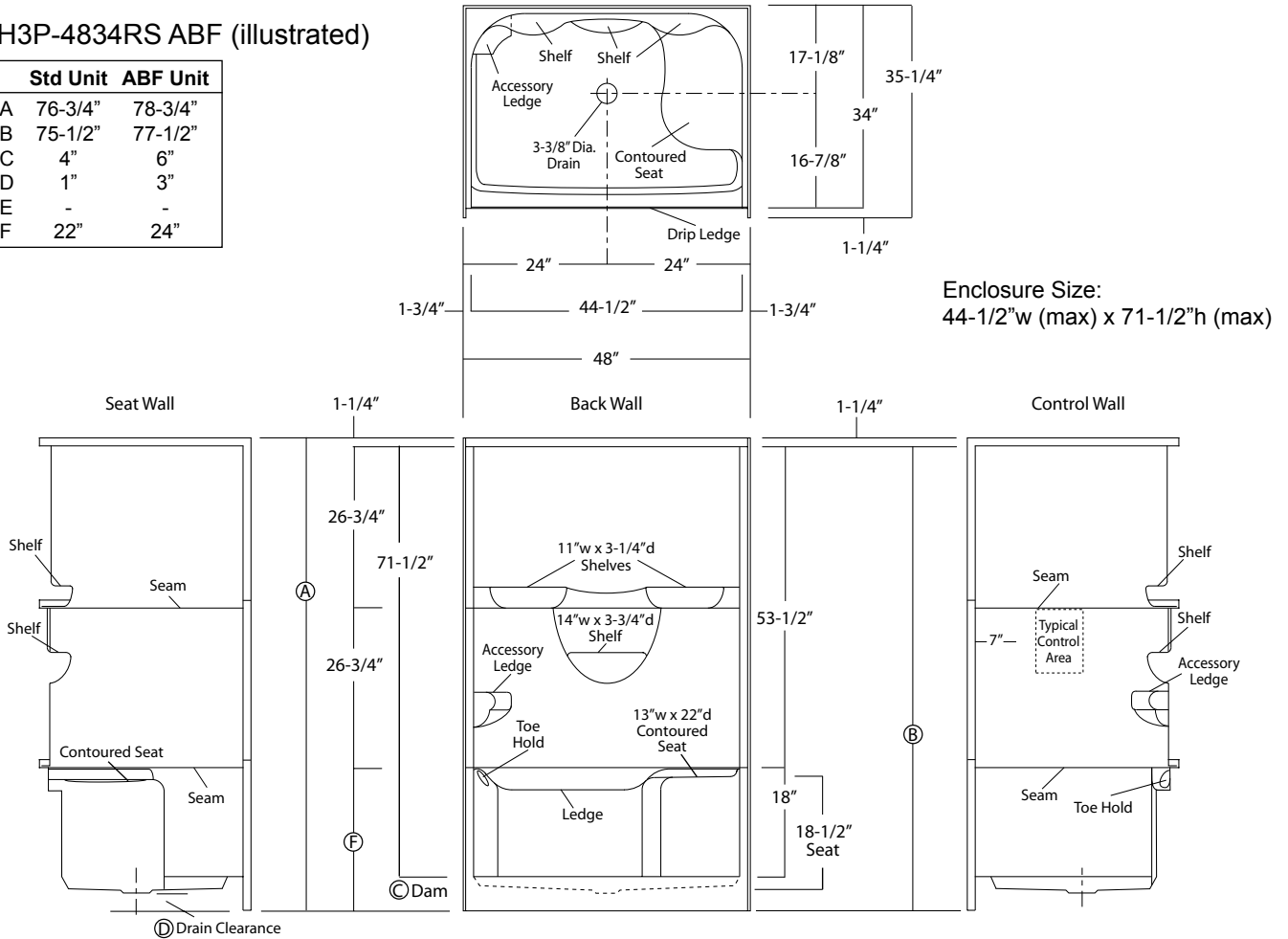
Order No.: SH3P-4834RS (RH seat / 4" dam)
 SH3P-4834LS (LH seat / 4" dam)

Order No.: SH3P-4834RS ABF (RH seat / 6" dam)
 SH3P-4834LS ABF (LH seat / 6" dam)

48" x 34", 3-piece gelcoated fiberglass shower with 'QuikClic', front side installation, 4" low profile dam (1" drain clearance) multi-level back wall shelves, corner accessory ledge, integrated toe hold/shaving rest, molded end seat, and center drain.

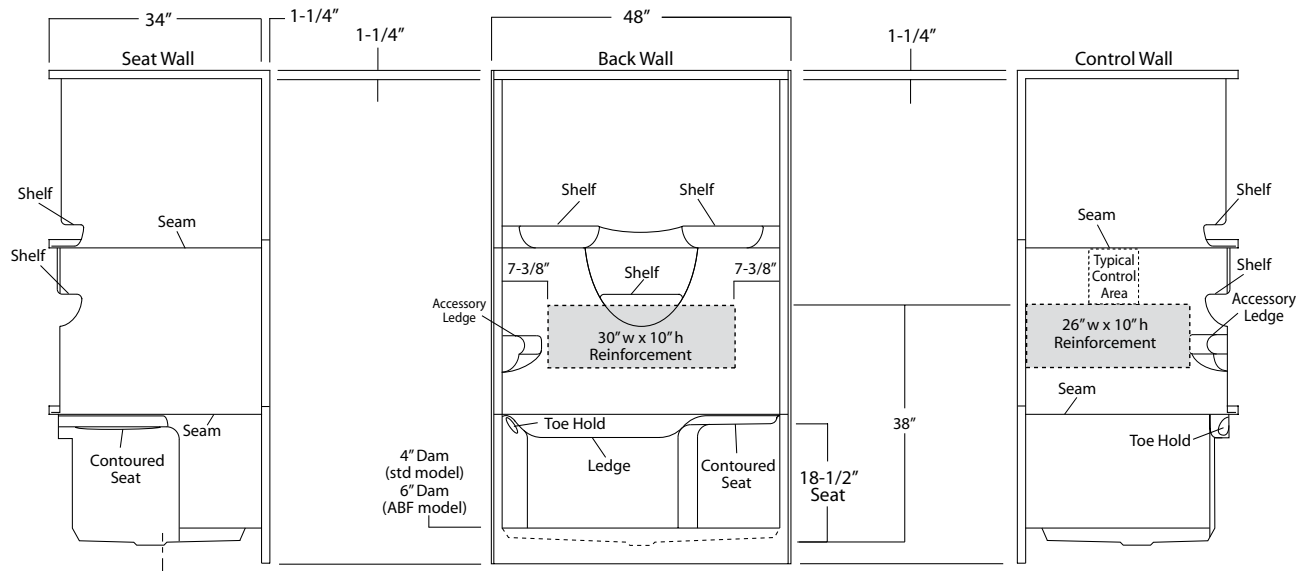
SH3P-4834RS ABF (illustrated)

	Std Unit	ABF Unit
A	76-3/4"	78-3/4"
B	75-1/2"	77-1/2"
C	4"	6"
D	1"	3"
E	-	-
F	22"	24"



Package Order No.: FH (Fair Housing wall reinforcement)

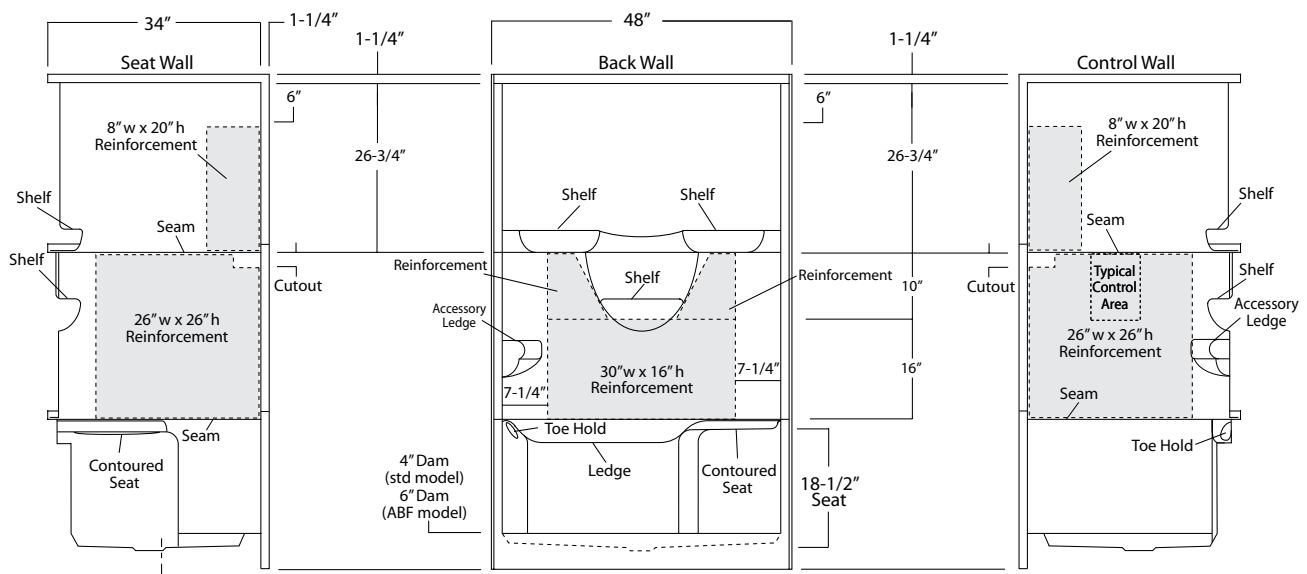
Package Includes: Factory applied, HUD-FHA compliant (Fair Housing), structurally reinforced wall areas (as shown) for the independent field application of bars.



Package Order No.: 3SM (3-side, mid-level wall reinforcement)

Package Includes: Factory applied, 3-side, mid-level, structurally reinforced wall areas (as shown), exceeding 'Fair Housing' (HUD/FHA) requirements, for independent field application of bars.

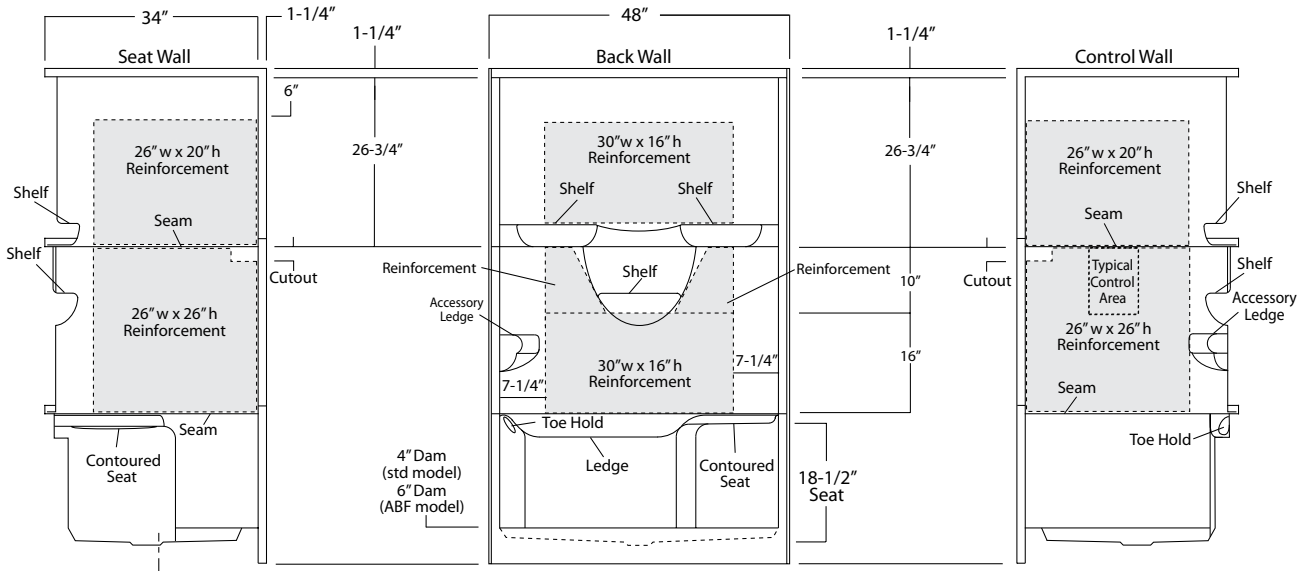
NOTE: Factory installed component packages available with listed reinforcement.



Package Order No.: 3SF (3-side, full-wall reinforcement)

Package Includes: Factory applied, 3-side, full-wrap, structurally reinforced wall areas (as shown), exceeding 'Fair Housing' (HUD/FHA) requirements, for independent field application of bars.

NOTE: Factory installed component packages available with listed reinforcement.



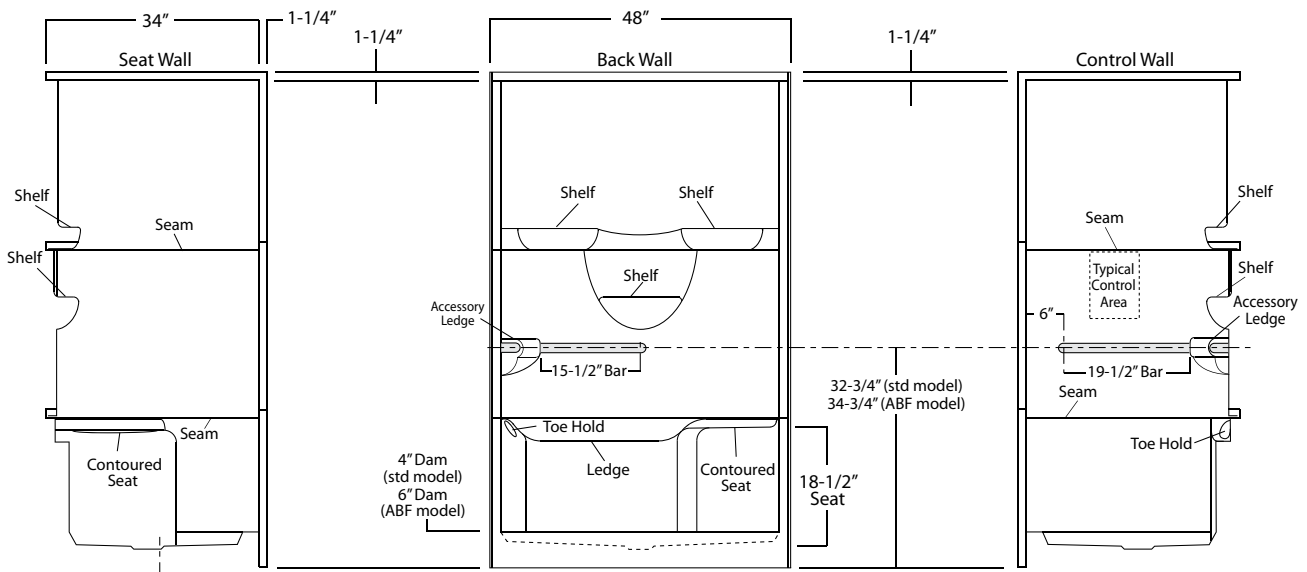
Package Order No.: BP1 (2-bar only package)

Upgrade Package No.: BP1 WHT (1-1/4\"/>

BP1 SNK (1-1/4\"/>

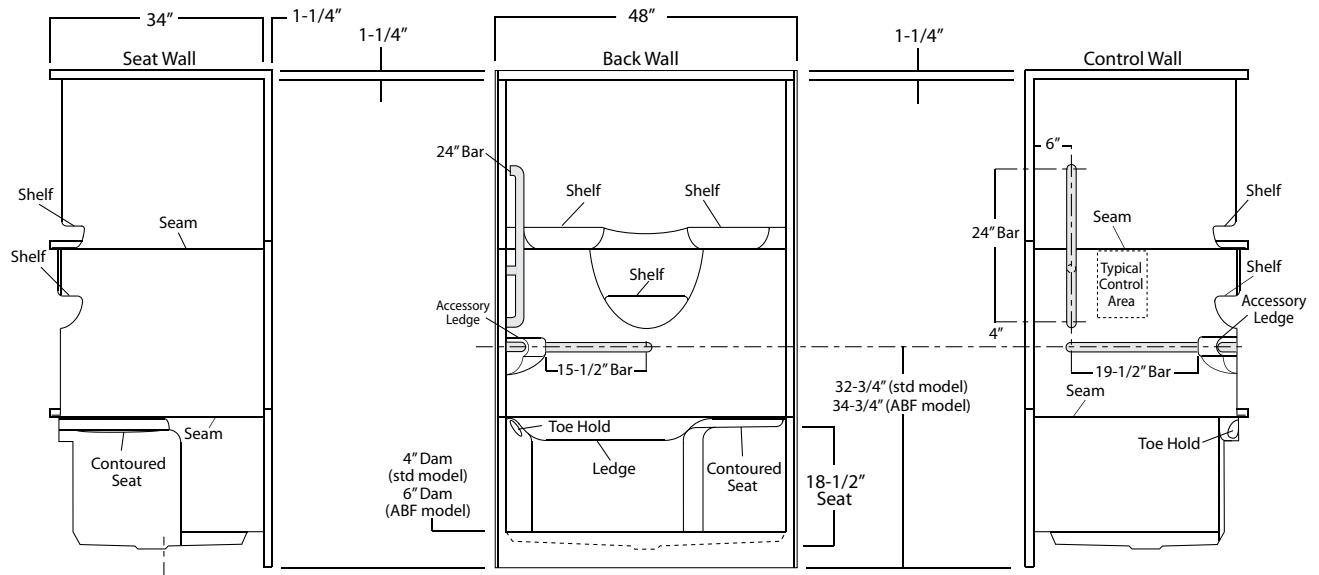
Package Includes: Factory installed, 1-1/2\"/>

NOTE: Positioning of factory installed components allow for the installation of a shower enclosure.



Package Order No.: **BP2 (3-bar only package)**
 Upgrade Package No.: **BP2 WHT (1-1/4" dia., white powder coat, 3-bar only package)**
BP2 SNK (1-1/4" dia., satin nickel, 3-bar only package)

Package Includes: Factory installed, 1-1/2" dia. stainless steel, 3-bar package with basic reinforcement for components (as shown).
 NOTE: Positioning of factory installed components allow for the installation of a shower enclosure.



Photographic images may include optional components and appear different than actual product.
 Dimensions shown are maximum. Due to the nature of the materials involved, actual unit dimensions can vary (tolerances: +/-1/8 inch)
 Oasis reserves the right to modify or discontinue product and/or associated equipment without prior written or verbal notification or obligation.