

Mixing Surgeon Scrub-Up Valves

TECK[®]
COMMERCIAL

DELTA[®]

SPECIFICATION: (EXAMPLE)

- Forged brass, **self-close foot pedal valve**
- Polished chrome-plated finish trim
- Indexed pedals
- Heavy duty rigid/swivel gooseneck spout and ... with ... (add control required)
with ... (add spout required)
with ... (add outlet required)

54T5432A



Engineer/Architect Approval

Model Specified:

Approval:

Date:

MODEL NUMBER EXAMPLE:

Configurations vary, see below for availability.

54T5322A-R4

Variation

3 = Wall hung double foot pedal valve

4 = Floor mounted double foot pedal valve

Spout

0 = No spout, valve ONLY

2 = Wallmount gooseneck

3 = Deckmount gooseneck

Outlet

0 = No outlet, valve ONLY

2 = Vandal resistant laminar outlet

4 = Standard aerator outlet

7 = Smooth end, laminar outlet

R* = Optional gooseneck spout dimensions:

R4 = Wallmount gooseneck – 6" long

R6 = Deckmount gooseneck – 6" long, 15.25" high

AVAILABLE MODELS		VARIATION					
		3			4		
		Wall Hung Double Foot Pedal Valve with Inlet & Outlet Stops			Double Floor Mount Foot Pedal Valve		
		SPOUT			SPOUT		
		0	2	3	0	2	3
		No Spout (Valve ONLY)	Wallmount (R2) Gooseneck Spout 4.5" (114 mm) long	Deckmount (R2) Gooseneck Spout 4.5" (114 mm) long, 12.2" (310 mm) high	No Spout (Valve ONLY)	Wallmount (R2) Gooseneck Spout 4.5" (114 mm) long	Deckmount (R2) Gooseneck Spout 4.5" (114 mm) long, 12.2" (310 mm) high
		54T5300A			54T5400A		
OUTLET	0 No Outlet (Valve ONLY)						
	2 Vandal Resistant Laminar Outlet 1.5 gpm (5.7 L/min)		54T5322A 54T5322A-R4	54T5332A		54T5422A	54T5432A 54T5432A-R6
	4 Standard Aerator Outlet 1.5 gpm (5.7 L/min)		54T5324A	54T5334A		54T5424A	54T5434A
	7 Smooth End, Laminar Outlet 1.0 gpm (3.8 L/min)		54T5327A	54T5337A			54T5437A

Refer to www.specselect.com for individual models.

Flow Rates are at 60 PSI.
Note: Use this page front and back as a product submittal sheet.

Delta reserves the right (1) to make changes in specifications and materials, and (2) to change or discontinue models, both without notice or obligation. Dimensions are for reference only. See current full-line price book or www.specselect.com for finish options and product availability.

DSP-54T5 Rev. J

Mixing Surgeon Scrub-Up Valves

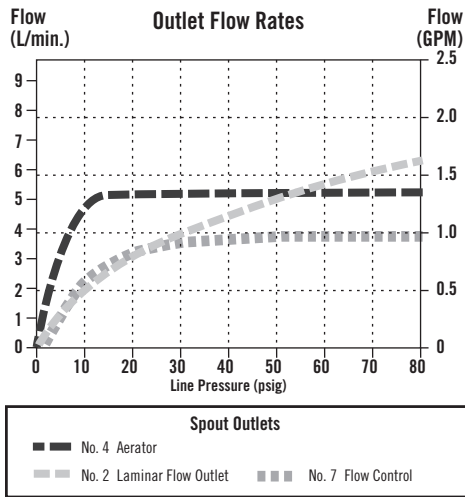
TECK
COMMERCIAL

DELTA

APPROVALS:

- CSA certified
- Complies to ASME A112.18.1/CSA B125.1
- For commercial use only
- Foot Pedal Control No. 3
Indicates compliance to ICC/ANSI A117.1
- Outlet options 2, 4 and 7 are EPA WaterSense listed
- Verified compliant with 0.25% weighted average Pb content regulations
(Contact Delta Representative for State and/or Local Approvals.)

FLOW RATE vs PRESSURE



Note: It is recommended that each supply line be equipped with a water hammer arrestor installed per manufacturer's instructions.

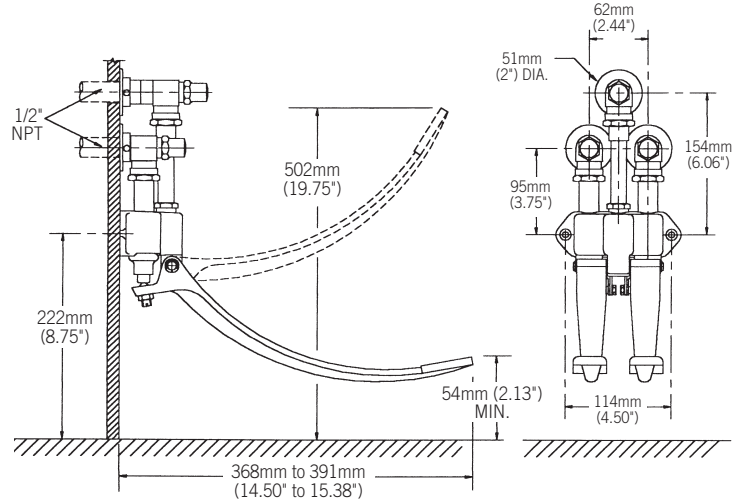
FOR OPTIONAL RIGID/SWIVEL & LIMITED SWING SPOUTS

See **DSP-R/S** for detailed specification.

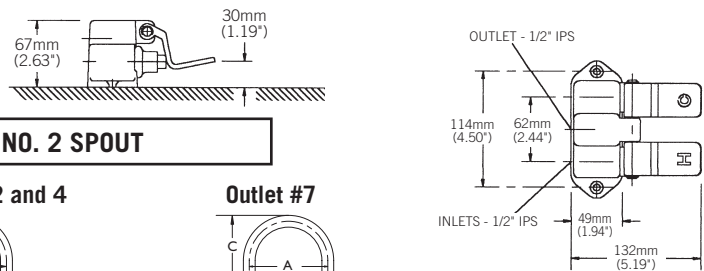
Note: Measurements may vary ± 6mm (0.25")

Refer to www.specselect.com for individual models.

NO. 3 CONTROL

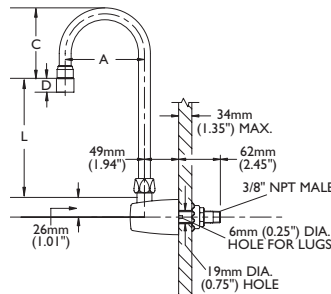


NO. 4 CONTROL

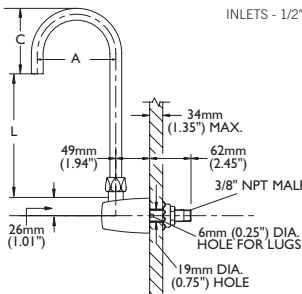


NO. 2 SPOUT

Outlets #2 and 4

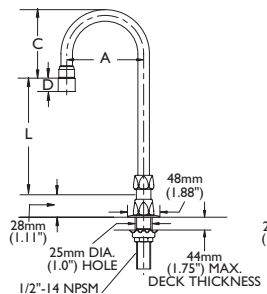


Outlet #7

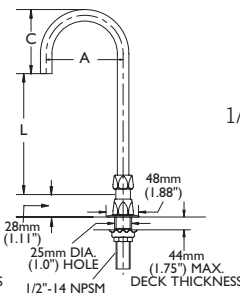


NO. 3 SPOUT

Outlets #2 and 4



Outlet #7



INLET FOR 3/8" OR 1/2" FLEXIBLE RISER OR 1/2-14 NPSM COUPLING NUT (NOT SUPPLIED)

GOOSENECK SPOUT ASSEMBLIES

SPOUT NO.	SPOUT/OUTLET	"A"		"C"		"L"	
		mm	in.	mm	in.	mm	in.
2 & 3	Gooseneck-Standard (R2) for Outlet #2 and 4	114	4.5	104	4.1	170	6.7
2 & 3	Gooseneck-Standard (R2) for Outlet #7	114	4.5	97	3.8	178	7.0

OUTLET NO.	"D"	
	mm	in.
2	18	0.69
4	17	0.67

Note: Use this page front and back as a product submittal sheet.