

TUB & SOAKER CATALOG



WHIRLPOOL
SYSTEMS

BUBBLE JET
SYSTEMS

ACCESSORIES

Clarion

EVERYDAY LUXURY





Model No. FR7242C

TUB & SOAKERS

The right bathtub makes it easy to relax. Care-free, soothing, designed for comfort. Everyday luxury from Clarion Bathware. Our vacuum formed, one-piece units are made-to-order for new construction or remodeling needs.

Consider an inviting array of sizes, shapes, colors and options in both acrylic and gelcoat finishes.

Clarion

EVERYDAY LUXURY

About Bubble Jet Systems.....2

About Whirlpool Systems.....3

Freestanding Tubs.....4

Acrylic Tubs & Soakers.....7

Gelcoat Tubs & Soakers10

Advanced Options.....17

Accessories.....18

Color Options20

Where to Buy.....21



Clarion sells products through a vast network of wholesale distributors and retailers.

To find a wholesaler near you, click the “Where To Buy” feature on our website www.ClarionBathware.com.

Almost every tub & soaker can become a Bubble Jet

BUBBLE JET MASSAGE SYSTEM: 16 multi hole bubble jets around the perimeter of the tub. Thousands of tiny air bubbles surround and stimulate the body.



MANIFOLD

To view engineering details, please visit our website at www.ClarionBathware.com.

ENGINEERING

BLOWER
120v-15amp blower with auto dry that automatically starts 20 minutes after system shuts off.

FLEXIBLE TUBING
Tubing directs air equally to all bubble jets placed around the tub.

CONTROLS

DIGITAL KEYPAD
Exclusive Slimfit LCD display with a watertight plastic membrane.

AVAILABLE ACCESSORIES See more optional accessories on page 18.



REMOVABLE MAGNETIC HEAD PILLOWS
Our removable magnetic head pillows are molded for maximum comfort. Easily removed for cleaning. Available in White or Black.



2" SPA MOOD LIGHTS
Energy efficient, long life LEDs. Cycles through the following colors: Clear, Pink, Red, Light Green, Dark Green, Lavender, Light Blue, Dark Blue. (120V/1Amp/20Amp GFI).



ERGO BARS
High quality grab bars. Sizes available 6" or 11". Compliant to the 250 lbs shear test in accordance with ASTM:F446-85 and CSA B45 0-02.



Standard Colors: White, Biscuit and Bone. Premium colors available. See page 20.

BUBBLE JETS

You've never experienced a rush like this. Enjoy a fingertip massage from thousands of bubbles flowing to the surface of your tub. A new level of everyday luxury from Clarion Bathware.

Our tubs feature 16 air jets that surround you with relaxing bubbles. To ensure long-lasting performance, each air jet has an individual check valve to ensure that water never gets into the airline.

Almost every tub & soaker can become a Whirlpool



To view engineering details, please visit our website at www.ClarionBathware.com.

THE ULTIMATE MASSAGE

NECK JETS

Two neck jets and soft molded head rest for maximum comfort. Molded head rest is available in White or Black. Controller included.

LOWER BODY MASSAGE

Adjustable jets for hips, knees, calves and feet offer maximum relief.

BACK MASSAGE JETS

Relief for upper and lower back. Available in White, Bone, Biscuit, Sterling Silver, Chrome, Brass, Brushed Nickel and Black.

AVAILABLE ACCESSORIES See more optional accessories on page 18.



2" SPA MOOD LIGHTS

Energy efficient, long life LEDs. Cycles through the following colors: Clear, Pink, Red, Light Green, Dark Green, Lavender, Light Blue, Dark Blue. (120V/1Amp/20Amp GFI).



REMOVABLE MAGNETIC HEAD PILLOWS

Our removable magnetic head pillows are molded for maximum comfort. Easily removed for cleaning. Available in White or Black.



Standard Colors: White, Biscuit and Bone. Premium colors available. See page 20.

WHIRLPOOLS

We put the “mmmm” in massage. With just the right number of water jets in all the right places. That’s soothing relief from Clarion Bathware.

Our acrylic and gelcoat models are built for years of enjoyment with 3/4 HP rated motors and factory installed air control, suction outlet and on/off switch. Enhance your experience even more with mood lights, aromatherapy, heater or other options.

Clarion Bathware's Freestanding Tubs are the newest addition to our product line. These beautiful designs, take everyday luxury to a whole new level!

HEADREST

SLEEK SILHOUETTE

This modern silhouette will update the look of any bathroom



NEW FOR 2015

FR7242C

72" L X 42" W

72" Freestanding Tub

- Freestanding modern design
- Two piece
- Center drain
- Heated pad available

ACCESSORY

HEATED BACKREST

Can be added to almost any molded seat of a Clarion shower or backrest of a Clarion tub/shower! Soothe your aches and pains with extra warmth of a heated seat or backrest.



See page 17 for more info.



To view engineering details, please visit our website at www.ClarionBathware.com.



Standard Colors: White, Biscuit and Bone. Premium colors available. See page 20.

FREESTANDING TUBS

A modern twist on an old classic. Our Freestanding Tubs offer a sleek, modern look that will become the focal point of any bathroom. Update your look with a tub that is as functional as it is beautiful.

Freestanding designs. Sleek silhouettes. Perfectly placed headrests. Everyday luxury, in all its glory. That is Clarion Bathware.

STANDARD FEATURES

- Gelcoat • 6 Year Warranty • Slip resistant floor • Complies with NAHB, HUD UM-73A & ANSI-Z124.1.2
- Accessories are optional



HEADREST

SLEEK SILHOUETTE

This modern silhouette will update the look of any bathroom



Air Zone Jets



UPGRADE

AIR ZONE SYSTEM

This new system allows you to upgrade your tub by adding pulsating air jets.

To view engineering details, please visit our website at www.ClarionBathware.com.

NEW FOR 2015

FR7242V

72" L X 42" W

72" Freestanding Tub

- Freestanding modern design
- Gelcoat
- Two piece
- Hydrotherapy system available
- Deep bathing well

AIR ZONE SYSTEM

EVERYDAY LUXURY

Upgrade your bathing experience by adding Clarion's Air Zone System for total relaxation. This new system allows you to enjoy 24 pulsating jets in your tub or tub/shower!

For more information see page 17.



CUSTOM COMFORT

Clarion Bathware is ideal for homes, condominiums, even multi-unit apartments. Many of our bathtubs are available as whirlpools that can be fitted with options such as heaters, mood lighting or aromatherapy.



Model No. AD7242VX



Standard Colors: White, Biscuit and Bone. Premium colors available. See page 20.

TUB & SOAKERS

The right bathtub makes it easy to relax. Care-free, soothing, designed for comfort. Everyday luxury from Clarion Bathware. Our vacuum formed, one-piece units are made-to-order for new construction or remodeling needs. Consider an inviting array of sizes, shapes, colors and options in both acrylic and gelcoat finishes.



WHIRLPOOL OPTIONAL Many Clarion Tub/Soakers can be ordered with a whirlpool base. All units with this option will have this mark next to them.



BUBBLE JET & WHIRLPOOL OPTIONAL Many Clarion Tub/Soakers can be ordered with a whirlpool or a bubble jet base. All units available with both options will have this mark next to them.

STANDARD FEATURES

- Acrylic • 6 Year Warranty • Slip resistant floor • Complies with NAHB, HUD UM-73A & ANSI-Z124.1.2
- Accessories are optional • Full accessory line, page 18 • Removable aprons available for many models



AD7248

72"W X 48"D X 21 1/2"H

72" Drop-In Tub

- Available, separate apron with removable access panel (AP72)
- End drain



AD7242VX

72"W X 42"D X 25 1/4"H

72" Oval Drop-In Tub

- Molded arm rest
- Contoured lumbar support
- Deep, comfortable bathing well
- Above the floor rough
- End drain



AD7242T

71 1/4"W X 41 3/4"D X 21 1/2"H

72" Drop-In Tub

- Acrylic towel bar
- Available, separate apron with removable access panel (AP72)
- Center drain



AD7236

72"W X 36"D X 21 1/2"H

72" Drop-In Tub

- Molded arm rests
- Available, separate apron with removable access panel (AP72)
- End drain



AD6060DS

60"W X 60"D X 21"H

60" Corner Drop-In Tub

- Molded arm rests
- Molded seat
- Front center drain



AD6070DSX

60"W X 60"D X 25"H

60" Corner Drop-In Tub

- Comfortable two person bathing well
- Above the floor rough
- Front center drain



AD6048

60"W X 48"D X 21 1/2"H

60" Drop-In Tub

- Available, separate apron with removable access panel (AP60)
- End drain



AD6042T

59 1/2"W X 41 1/2"D X 21 1/2"H

60" Drop-In Tub

- Molded arm rests
- Two acrylic towel bars
- Available, separate apron with removable access panel (AP60)
- End drain

STANDARD FEATURES

- Acrylic • 6 Year Warranty • Slip resistant floor • Complies with NAHB, HUD UM-73A & ANSI-Z124.1.2
- Accessories are optional • Full accessory line, page 18 • Removable aprons available for many models



Removable Access Panel AP60



AD6036

60"W X 36"D X 21 1/2"H

60" Drop-In Tub

- Molded arm rests
- Available, separate apron with removable access panel (AP60)
- End drain

AD6032

60"W X 32"D X 21 1/2"H

60" Drop-In Tub

- Molded arm rests
- Available, separate apron with removable access panel (AP60)
- End drain



Bath Time for Years to Come

Learn how to choose gel-coat or acrylic

GEL-COAT FIBERGLASS

The material of choice for style, strength and affordability. At Clarion Bathware we first apply a thick layer of gelcoat to the mold. Next, we carefully hand spray the resin and fiberglass strands as we incorporate the reinforcing plywood panels to create a beautiful, long-lasting bath product for your home. Every Clarion product comes standard with an industry leading 6 Year Warranty for even more comfort.

ACRYLIC

A step up in luxury for your bathroom and your lifestyle. The benefits of acrylic are a higher gloss finish that is more luxurious, more durable and more stain resistant for years of beauty. We start with a cast acrylic sheet that is vacu-formed to your desired mold resulting in a sensuous bathtub or shower enclosure that you will truly enjoy for years and years to come.



Standard Colors: White, Biscuit and Bone. Premium colors available. See page 20.



RE4272LX or RE4272RX
72"W X 42"D X 26"H

72" Bathtub with 26" Apron

- Molded arm rests
- Available with removable access panel (RE4272LAX or RE4272RAX)
- Left or right hand drain
- 8 or 12 Whirlpool jet systems available
- Bubble jet system available



RE4272
72"W X 42"D X 26"H

72" Garden Tub with 21" Apron

- Molded arm rests
- Available with removable access panel (RE4272A)
- Rear center drain



RE4272DS
72"W x 42"D x 24"H

72" Drop-In Tub

- Molded arm rests
- Contoured lumbar support
- End drain



RE4272D
72"W x 39"D x 19"H

72" Hourglass Shaped Drop-In Tub

- Molded arm rests
- Center drain



RE3672D
72"W X 36"D X 22"H

72" Drop-In Tub

- Molded arm rests
- Contoured lumbar support
- End drain

STANDARD FEATURES

- Gelcoat • 6 Year Warranty • Slip resistant floor • Complies with NAHB, HUD UM-73A & ANSI-Z124.1.2
- Accessories are optional • Full accessory line, page 18 • Removable aprons available for many models



RE6000L or RE6000R

65 3/4" W X 36" D X 23 1/4" H

66" Tub with 17" Apron

- Molded soap holders
- Available with removable access panel (RE6000LA or RE6000RA)
- Left or right hand drain



RE8864LAX (Front and left side aprons) or RE8864RAX (Front and right side aprons)

64" W X 44" D X 30" H

64" Rectangular Corner Tub with 22" Aprons

- Simulated tile design
- Available without removable access panel (RE8864LX or RE8864RX)
- Above the floor rough
- Left or right hand drain



RE4160X

61" D x 24" H

61" Round Drop-In Tub

- Molded back rest
- Two person bathing well
- Above the floor rough
- End drain

Access to Pump



Access to Pump



RE4330AX

60" W X 60" D X 27" H

60" Corner Tub with 22" Apron

- Molded seat
- Two removable access panels
- Above the floor rough
- Front center drain



RE4060A

60"W X 60"D X 27"H

60" Corner Tub with 22" Apron

- Molded seat and arm rests
- Removable access panel
- Front center drain



RE4060F

60"W X 60"D X 22 ½"H

60" Corner Drop-In Tub with Tiling Flange

- Molded seat and arm rests
- Comfortable bathing well
- Front center drain



RE3000

60"W x 48 ½"D x 23 ½"H

60" Garden Tub with 17" Apron

- Molded step
- Rear center drain



RE4260L or RE4260R

60"W X 43"D X 23 ¼"H

60" Deluxe Garden Tub with 19 ½ " Apron

- Molded arm rests
- Left or right hand drain



RE4240

60"W X 42 ½"D X 24"H

60" Oval Drop-In Tub

- Molded arm rests
- Comfortable bathing well
- End drain



RE4250T

60"W X 42"D X 15 ¾"H

60" Drop-In Tub

- Two acrylic towel bars
- End drain

STANDARD FEATURES

- Gelcoat • 6 Year Warranty • Slip resistant floor • Complies with NAHB, HUD UM-73A & ANSI-Z124.1.2
- Accessories are optional • Full accessory line, page 18 • Removable aprons available for many models



RE3100X
60"W X 42"D X 28 1/4"H

60" Garden Tub with 22" Apron

- Molded soap holders and arm rests
- Available with removable access panel (RE3100AX)
- Above the floor rough
- Rear center drain



RE3100MDX
60"W X 42"D X 28 1/4"H

60" Garden Tub with 22" Apron

- Molded arm rests
- Available with removable access panel (RE3100MDAX)
- Front center drain



RE4641X
60"W X 41"D X 25"H

60" Tub with 19" Apron and Bowed Front

- Molded arm rests
- Spacious bathing well
- Above the floor rough
- Rear center drain



RE3660LA or RE3660RA
60"W X 37"D X 21 1/2"H

60" Soaker Tub with 18" Apron

- Molded arm rests
- Removable access panel
- Available without removable access panel (RE3660L or RE3660R)
- Left or right hand drain



RE3637
60"W X 37"D X 24"H

60" Garden Tub with 19" Apron

- Molded soap holder
- Available in above the floor rough (RE3637X)
- Available with removable access panel (RE3637A)
- Rear center drain



RE3660D
60"W X 36"D X 22"H

60" Drop-In Tub

- Molded arm rests
- Contoured lumbar support
- End drain



RE4601L or RE4601R
59 3/4" W X 32 3/4" D X 18 1/2" H

60" Tub with 15" Apron

- Available in above the floor rough (RE4601LX or RE4601RX)
- Left or right hand drain



RE4630L or RE4630R
60" W X 30" D X 19" H

60" Tub with 18" Apron

- Available above the floor rough (RE4630LX or RE4630RX)
- Left or right hand drain



RE6032LB or RE6032RB
59 3/4" W X 33" D X 25 1/2" H

60" Tub with 18" Apron

- Available with removable access panel (RE6032LBA or RE6032RBA)
- Left or right hand drain



RE4060D
59" W X 59" D X 21 1/2" H

59" Corner Drop-In Tub

- Molded seat and arm rests
- Comfortable bathing well
- Front center drain



Access to Pump

Access to Pump

RE4500AX
55 1/4" W X 55 1/4" D X 27" H

56" Corner Tub with 22" Apron

- Molded seat and step
- Two removable access panels
- Above the floor rough
- Rear center drain



RE4000
54" W X 54" D X 18" H

54" Corner Drop-In Tub with Tiling Flange

- Molded seat
- Front center drain

STANDARD FEATURES

- Gelcoat • 6 Year Warranty • Slip resistant floor • Complies with NAHB, HUD UM-73A & ANSI-Z124.1.2
- Accessories are optional • Full accessory line, page 18 • Removable aprons available for many models



RE4554AX

54"W X 54"D X 26 3/4"H

54" Corner Tub with 19 1/4" Apron

- Molded head and back rest
- Two removable access panels
- Above the floor rough
- Front center drain



RE2000X

54"W X 42"D X 24 3/4"H

54" Garden Tub with 19 1/2" Apron

- Molded step
- Above the floor rough
- Rear center drain



RE4401LX or RE4401RX

54"W X 28"D X 17 1/2"H

54" Tub with 16 1/2" Apron

- Above the floor rough
- Left or right hand drain



RE4554DX

52"W X 52"D X 24"H

52" Drop-In Corner Bathtub

- Molded head rest
- Molded back rest
- Above the floor rough
- Front center drain

STANDARD FEATURES

- Gelcoat • 6 Year Warranty • Slip resistant floor • Complies with NAHB, HUD UM-73A & ANSI-Z124.1.2
- Accessories are optional • Full accessory line, page 18 • Removable aprons available for many models



Access to Pump

RE6032LA or RE6032RA

59 3/4" W X 33" D X 78 1/4" H

60" 3-Piece Tub/Shower with 18" Apron

- Molded soap ledges
- Removable access panel
- Available above the floor rough (RE6032LAX or RE6032RAX)
- Available with E-Z Pin System (REZ6032LA or REZ6032RA)
- Available with 4 & 6 jet whirlpool systems
- Left or right hand drain



Access to Pump

RE7900LAT or RE7900RAT

60" W X 33" D X 73 3/4" H

60" 1-Piece Tub/Shower with 15" Apron

- Molded soap ledges
- Acrylic towel bar
- Removable access panel
- Available with 4 & 6 jet whirlpool systems
- Left or right hand drain



Clarion's 6 Year Warranty

The bathroom has to be as tough as it is beautiful. Durable and resistant to stain or mildew. That's Clarion Bathware.

Our hard, non-porous surfaces hold up to real life. Our colorfast products wipe to a shine without scrubbing so they're easy to maintain.

Clarion Bathware's 6 Year Warranty covers all acrylic and gelcoat products against defects in material and workmanship.



AIR ZONE SYSTEM UPGRADE

Upgrade your standard Bubble Jet System with Clarion's new luxurious Air Zone System. This new system allows you to enjoy pulsating jets in your tub or tub/shower!

FEATURES:

- 100% customizable jet placement
- Personalized control panel with up to four preprogrammed modes
- Self cleaning air system
- A seamless addition that takes "everyday luxury" to a new level
- Works great with our Bubble Jet, Chromatherapy and Aromatherapy systems



NECK JET PILLOW

Add an ergonomic neck jet pillow to most Clarion tubs or tub/showers, for additional relief, comfort and support.

FEATURES:

- Ergonomic design for maximum comfort and support
- Standard white and black colors available
- Other colors require extended lead time

COLORS:

- White
- Black
- Royal Blue
- Ocean Blue
- Dark Blue
- Gray
- Raspberry
- Red
- Teal



HEATING PAD

Can be added to almost any molded seat of a Clarion shower or backrest of a Clarion tub/shower! Soothe your aches and pains with extra warmth of a heated seat or backrest.

FEATURES:

- Can be added to the molded shower seat or backrest of your tub or tub/shower
- Factory installed
- 24 volt transformer included
- Electronic keypad included
- Maintenance free



WHIRLPOOL OPTIONS

BIG JET COLORS



White



Bone



Biscuit



Sterling Silver



Chrome



Brass



Brushed Nickel



Black

MICRO JET COLORS



White



Bone



Biscuit



Sterling Silver



Chrome



Brass



Brushed Nickel



Black

LIGHTING



2" SPA MOOD LIGHTS

Energy efficient, long life LEDs. Cycles through the following colors: Clear, Pink, Red, Light Green, Dark Green, Lavender, Light Blue, Dark Blue. (120V/1Amp/20Amp GFI).



12 STRING LED SURROUND LIGHTS

Small LED mood lights. Cycles through the following colors: Clear, Pink, Red, Light Green, Dark Green, Lavender, Light Blue, Dark Blue. (12V/.24Amp/20Amp GFI).

ERGO BARS



ERGO BARS

High quality grab bars. Sizes available 6" or 11". Compliant to the 250 lbs shear test in accordance with ASTM:F446-85 and CSA B45 0-02.

WHIRLPOOL OPTIONS



NECK JETS

Two neck jets and soft molded head rest for maximum comfort. Molded head rest is available in White or Black. Controller included.



REMOVABLE MAGNETIC HEAD PILLOWS

Our removable magnetic head pillows are molded for maximum comfort. Easily removed for cleaning. Available in White or Black.



PUMPS

3/4 Hp or 1 Hp with thermal protected motor.
3/4 Hp Pump (120V/.7Amp/20Amp GFI) 1Hp Pump (120V/12Amp/20Amp GFI).



OZONE

Naturally formed from oxygen, leaves no products in water, no need for additional sanitary solutions to clean your bath. (120V/.09Amp/20Amp GFI).



HEATERS

Heater with stainless steel flow tube and element offers superior corrosion resistance. (120V/12.5Amp /20Amp GFI).



AROMATHERAPY STRIP DISPENSER

Strip dispenser assembly available in White, Bone, Biscuit.

TRIM OPTIONS



TILING FLANGE

Tiling flange available for drop in unit installed into alcove.

BUBBLE JET OPTIONS



BUBBLE JET KEYPAD

Electric components integrated in a watertight plastic membrane to ensure a long life for your unit.



MULTI HOLE AIR JET

16 Bubble jet system available in White, Bone, Brass, Chrome, Brushed Nickel.

SOAP DISH



COMPOSITE SOAP DISH

Surface mount design. Compatible with all showers and tub/showers. Available in standard white, biscuit and bone. All other colors require extended lead time.

CLARION'S COLOR OPTIONS

STANDARD ACRYLIC AND GELCOAT COLORS



White

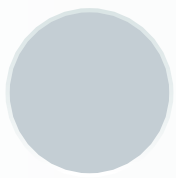


Biscuit

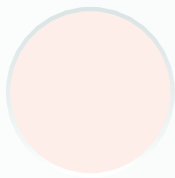


Bone

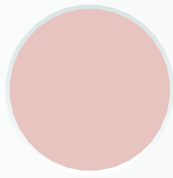
PREMIUM GELCOAT COLORS



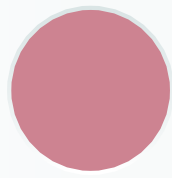
Platinum Gray



Innocent Blush



Cameo Rose



Dusty Rose



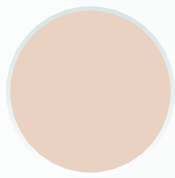
Dresden Blue



Heron Blue



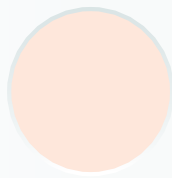
Desert Bloom



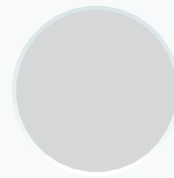
Fawn Beige



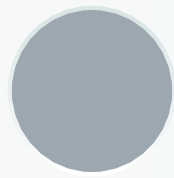
Peach Bisque



Peach Blossom



Tender Gray



Sterling Silver



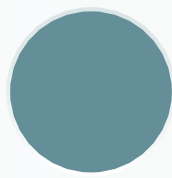
Skylight Blue



Zinfandel



Shell



Island Sea



Seafoam Green



Daydream Blue

**Please note that the colors shown above are an approximation. Actual colors may vary slightly from what is displayed.*

CUSTOM GELCOAT COLORS

Clarion Bathware can work with you to create any custom color. Clarion takes great pride in the ability to match colors. Our friendly and knowledgeable sales staff will happily assist you in the creation of your perfect color.

**Please note that custom colors may require additional lead times.*

WHERE TO BUY

Clarion Bathware products are available through our vast network of wholesalers. You will find many of our products in stock and custom orders can be done directly with the wholesaler. Please contact your nearest wholesaler for price and availability.

FACTORY DIRECT SHIPPING

Clarion Bathware ships direct from our manufacturing facility in Marble, Pa., on our own fleet of air-ride trailers. Clarion's company drivers guarantee you on-time delivery and safe handling of our made-to-order bathware products.

To locate a wholesaler near you, contact us at 1 (800) 576-9228, Ext. 5212 or www.ClarionBathware.com.



OUR WARRANTY



The bathroom has to be as tough as it is beautiful. Durable and resistant to stain or mildew. That's Clarion Bathware.

Our hard, non-porous surfaces hold up to real life. Our colorfast products wipe to a shine without scrubbing so they're easy to maintain.

6 YEAR WARRANTY

Clarion Bathware's 6 Year Warranty covers all acrylic and gelcoat products against defects in material and workmanship.

Clarion

EVERYDAY LUXURY

44 Amsler Avenue
Shipperville, PA 16254

TEL 1 800 576-9228
FAX 1 814 226-0730

www.ClarionBathware.com

