

SUBMITTAL SHEET

JOB NAME		ITEM TAG
JOB LOCATION		PART NUMBER
CONTRACTOR	DATE	
ENGINEER APPROVAL	DATE	

BRASS COUNTERSUNK CLEANOUT PLUG

DWV Cleanout Plug

Designed for DWV installations only, permitting access to the system.

Can be threaded into DWV cleanout fittings.

Prevents sewer gasses from entering the building.

Solid design is not drilled and tapped for cover and cover screw.

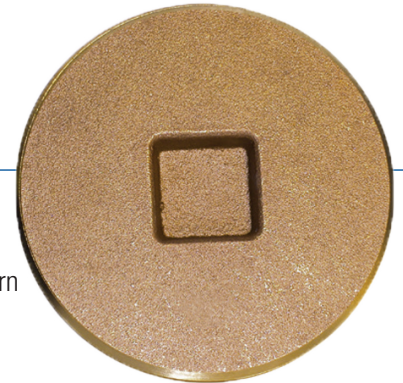
Durable brass construction is reusable, ideal for residential and commercial applications.

Available in nominal sizes 1-1/2" to 8"

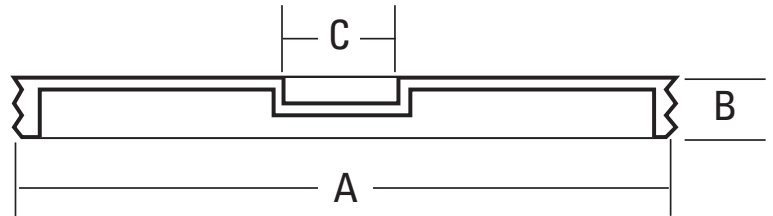
Working Pressure, Non Shock (PSI)

Cold working pressure (CWP): < 10 psi (DWV)

- Conforms to the Southern Code standard.



Pictured:
Countersunk plug



Pictured
Countersunk plug
Cut-away

MATERIAL SPECIFICATION

PART	MATERIAL	SPECIFICATION
Body	Cast Brass	ASTM B584 UNS C85700

DIMENSIONS

Part Number	Nominal Size	A	B	C*
302-624	1-1/2"	1.87	0.43	0.65
302-625	2"	2.35	0.42	0.80
302-626	2-1/2"	2.83	0.42	0.87
302-627	3"	3.45	0.48	1.13
302-628	3-1/2"	3.93	0.47	0.96
302-629	4"	4.45	0.45	1.15
302-630	5"	5.50	0.51	1.44
302-635	5-1/2"	5.94	0.81	1.50
302-631	6"	6.32	0.57	1.25
302-632	8"	8.31	0.65	1.47

*top of square socket, flat-to-flat