

CLEANOUT COVER

870 series

SPECIFICATION

Sioux Chief 870 Series cleanout cover shall be used where necessary in drainage systems. Cleanout cover shall be fastened with a bolt (not included) to a cleanout plug or wall bar. Cleanout covers shall be stainless steel for corrosion resistance, and be of sufficient diameter to completely cover cleanout access hole. Covers shall be 16 or 20 gauge for light foot traffic or wall applications respectively. Stamping shall be available for easy recognition.

MATERIALS

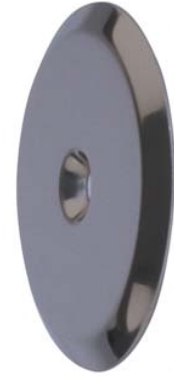
430 stainless steel

DIMENSIONS

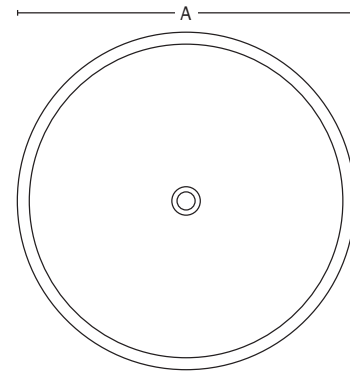
A: diameter

870-(9)3	3"
870-(9)4	4"
870-(9)5	5"
870-(9)6	6"
870-(9)8	8"
870-810	10"
870-812	12"

Item # Submitted _____
Job Name _____
Location _____
Engineer _____
Contractor _____
PO# _____ TAG _____



870-4



Create Item Number

870-ABC

e.g. 870-94 = 4" Diameter 16 gauge stainless steel cleanout cover

A THICKNESS

- _ 20 gauge¹
- 9 16 gauge

B COVER DIAMETER

- 3 3" diameter cover
- 4 4" diameter cover
- 5 5" diameter cover
- 6 6" diameter cover
- 8 8" diameter cover
- 810 10" diameter cover²
- 812 12" diameter cover²

C OPTIONS

- S stamped cover, specify letters
- 1 20 gauge is standard unless otherwise specified
- 2 Not available in 16 gauge