

*For Residential and Commercial Applications*

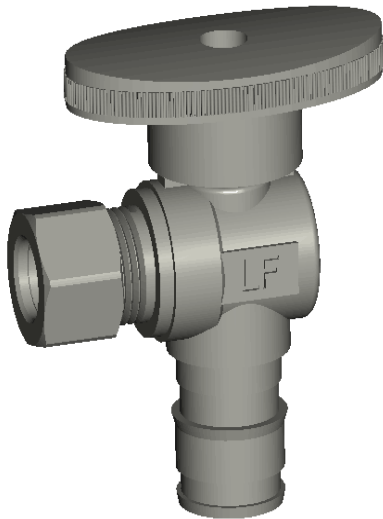
Job Name		Engineer / Architect	
Job Location		Wholesaler	
Submittal Date		Contractor	

## PLB107X 1/4 Turn Angle Stop - Cold Expansion Barb x Compression

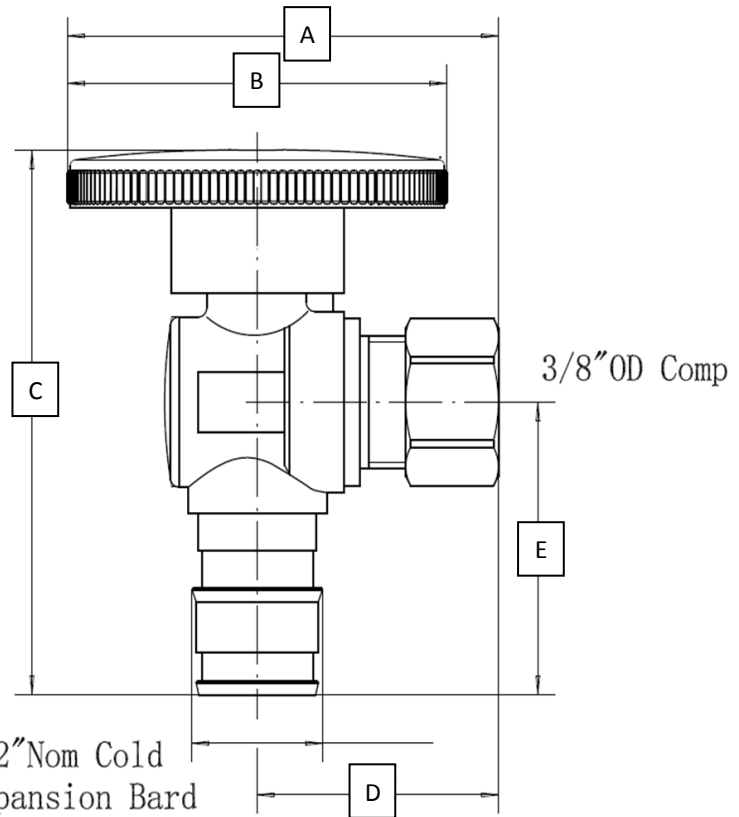
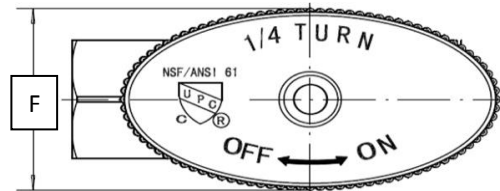
**Use:** For use only in potable water distribution systems, hot and cold, in accessible locations only

**Part Listing:**

- PLB107X B 1/2" nom cold expansion barb (for PEX) x 3/8" OD compression, chrome plated, bulk



PART DIMENSIONS (Inches)						
Model	DIM. A	DIM. B	DIM. C	DIM. D	DIM. E	DIM. F
PLB107X	2.02	1.77	2.41	1.12	1.25	.94



Operating Specifications	
Temperature	Pressure
40°- 140° F	125 PSI maximum

MATERIAL SPECIFICATIONS	
<b>Body</b>	Low lead brass, chrome plated
<b>Stem</b>	Low lead brass
<b>Ball</b>	Low lead brass, chrome plated
<b>Seats</b>	PTFE
<b>O-ring</b>	NBR
<b>Handle</b>	ABS, chrome plated
<b>Handle Screw</b>	Stainless steel
<b>Compression Nut</b>	Brass, chrome plated
<b>Compression Sleeve</b>	Brass
<b>Adaptor</b>	Low lead brass, chrome plated

**Listings & Certifications:**

- IAPMO listed to ASME A112.18.1 / CSA B125.1 (File #8425)
- IAPMO listed to NSF / ANSI 372 for No-Lead (File #8427)
- IAPMO listed to NSF61 (File #N-8426)



*This specification and all information contained herein is the confidential and exclusive property of BrassCraft Manufacturing, and shall not be disclosed to others without the written consent of BrassCraft Mfg. This specification must be returned to BrassCraft Mfg. if requested.*