



Faucet Specifications

| | |
|-------------|--------|
| Color | SKU |
| Matte Black | 527491 |

Product Features

- Solid spout, cold water only
- 360° swivel for optimal range of motion
- Solid brass construction
- Can be installed with most water filtration systems
- 1.5 GPM (Gallons Per Minute) maximum flow rate

Planning information

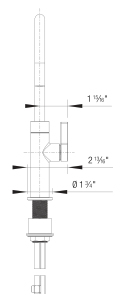
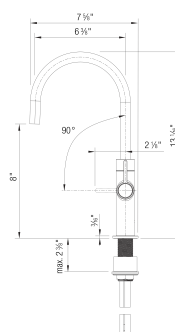
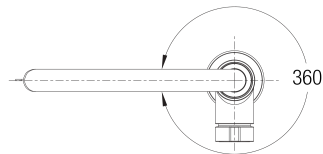
RO ready Installation
Integrated air gap
Filter system not included
1 3/8" diameter drilled faucet hole required for installation

Optional Accessories

| | |
|---------------------------|--------|
| Filter Starter Set Soft L | 443274 |
| Filter Starter Set | 443275 |
| Microplastic S | |
| Filter Flowmeter | 443276 |

CULINA II Beverage

Special colors



Warranty

BLANCO offers a limited lifetime warranty on all sinks and faucets, as well as a one-year warranty on all custom accessories.

Code/Standards Compliance

BLANCO sinks and faucets are third-party tested and certified to standards and listed by applicable certification bodies. For more information on individual product listings, contact our office or listing organization.



View our how-to videos to learn more about installing and caring for BLANCO products:
<https://www.blanco.com/us-en/service/how-to-videos/how-to-videos-for-sinks/>

Questions? Contact us today



BLANCO America, Inc.
110 Mount Holly By-Pass
Lumberton, NJ 08048

Phone & Fax
Phone: 888-668-6201
Fax: 609-668-6211

While BLANCO endeavors to provide accurate information, all dimensions are nominal, cannot be guaranteed, and are subject to change or cancellation. BLANCO assumes no responsibility for use of superseded or voided specifications.

CULINA II Beverage

Special colors