



CULINA II Pot Filler PVD

Faucet Specifications

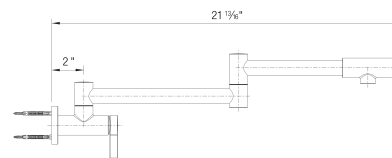
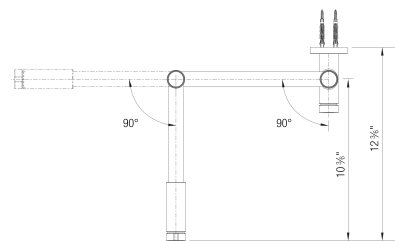
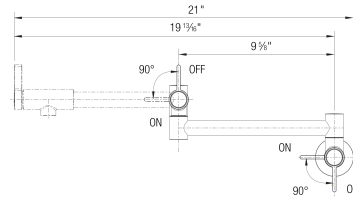
Color	SKU
Satin Gold	527488
Satin Dark Steel	527487
PVD Steel	527484
Satin Platinum	443254

Product Features

- Wall mount, cold water pot filler
- Articulated arm extends 20" and swivels 180°
- Two single lever handles with dual shut-off valves
- Solid brass construction
- 1.5 GPM (Gallons Per Minute) flow rate

Planning information

Requires threaded nipple with ½" outer diameter
(not included)



Warranty

BLANCO offers a limited lifetime warranty on all sinks and faucets, as well as a one-year warranty on all custom accessories.

Code/Standards Compliance

BLANCO sinks and faucets are third-party tested and certified to standards and listed by applicable certification bodies. For more information on individual product listings, contact our office or listing organization.



View our how-to videos to learn more about installing and caring for BLANCO products:
<https://www.blanco.com/us-en/service/how-to-videos/how-to-videos-for-sinks/>

Questions? Contact us today



BLANCO America, Inc.
110 Mount Holly By-Pass
Lumberton, NJ 08048

Phone & Fax
Phone: 888-668-6201
Fax: 609-668-6211

While BLANCO endeavors to provide accurate information, all dimensions are nominal, cannot be guaranteed, and are subject to change or cancellation. BLANCO assumes no responsibility for use of superseded or voided specifications.

CULINA II Pot Filler

PVD