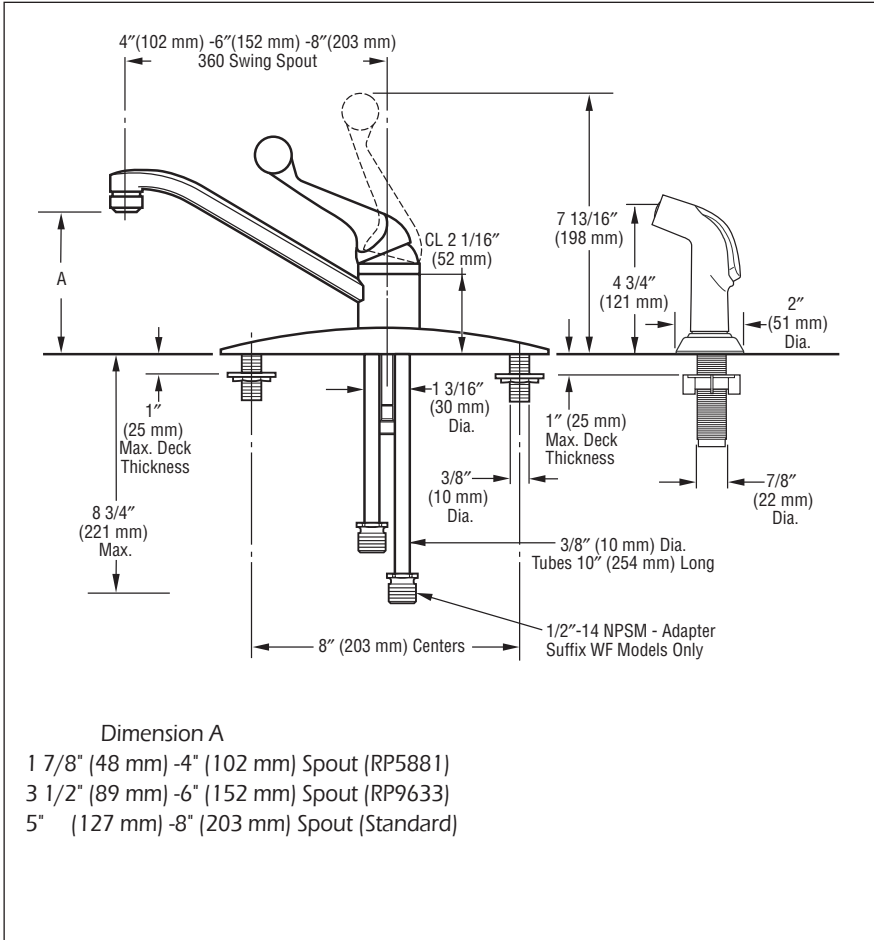


Submitted Model No.: _____
 Specific Features: _____



see what Delta can do™

KITCHEN FAUCETS

- Classic Series
- Single Handle Deck Mount

STANDARD SPECIFICATIONS:

- Maximum 1.8 gpm @ 60 psi, 6.8 L/min @ 414 kPa
- Three or four hole mount
- Spout rotates 360°
- Control handle shall return to neutral position when faucet is turned off
- Control mechanism shall be of the rotating stainless steel ball type with replaceable non-metallic seats operating in stainless steel lined sockets
- Model 400 series with spray attachment has anti-siphon device as integral part of valve body
- Model 100 and 400 series can be field converted from 8" (203 mm) to 6" (152 mm) centers
- 3/8" O.D. copper tube inlets
- Vegetable sprayer hose with chrome sprayhead on model 400 series - 45" (1143 mm) long threaded hose
- Models supplied with 1/2"-14 NPSM adapters

WARRANTY

- Lifetime limited warranty on parts (other than electronic parts and batteries) and finishes; or, for commercial users, for 5 years from the date of purchase.
- 5 year limited warranty on electronic parts (other than batteries); or for commercial users, for 1 year from the date of purchase. No warranty is provided on batteries.

COMPLIES WITH:

- ASME A112.18.1 / CSA B125.1
- ♿ Indicates compliance to ICC/ANSI A117.1 - Valve control only
- Verified compliant with .25% weighted average Pb content regulations.