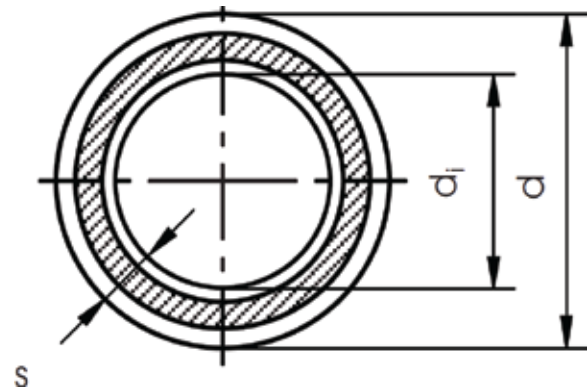


aquatherm greenpipe®
faser-composite pipe SDR 7.4

Material: fuviolon® PP-R (80)
faser-composite

In accordance with:

- NSF-14
- NSF-51
- NSF-61
- CSA-B137.11
- ICC AC 122
- ICC ESR 1613
- ASTM F 2389
- CFIA #A508



NSF System Certification:

Including fittings, connection pieces, and connection techniques.

Fields of Application:

For high temperature, moderate pressure systems, particularly domestic hot water systems.

Pipe *			Diameter**	Wall thickness	Internal diameter	Water content	Weight ***
Art.-No.	Dimension Nom. I.D. -- O.D.	Packing unit	d (mm)	s (mm)	di (mm)	gal/ft	lb/ft
0670708	1/2" -- 20 X 2.8 mm	25	20	2.8	14.4	0.0131	0.102
0670710	3/4" -- 25 X 3.5 mm	25	25	3.5	18	0.024	0.159
0670712	1" -- 32 X 4.4 mm	10	32	4.4	23.2	0.0340	0.255
0670714	1.25" -- 40 X 5.5 mm	10	40	5.5	29	0.0531	0.396
0670716	1.5" -- 50 X 6.9 mm	5	50	6.9	36.2	0.0828	0.618
0670718	2" -- 63 X 8.6 mm	5	63	8.6	45.8	0.1325	0.970
0670720	2.5" -- 75 X 10.3 mm	5	75	10.3	54.4	0.1870	1.380
0670722	3" -- 90 X 12.3 mm	3	90	12.3	65.4	0.2703	1.978
0670724	3.5" -- 110 X 15.1 mm	2	110	15.1	79.8	0.4023	2.959
0670726	4" -- 125 X 17.1 mm	1	125	17.1	90.8	0.521	3.809
0670730	6" -- 160 X 21.9 mm	1	160	21.9	116.2	0.854	6.075
0670734	8" -- 200 X 27.4 mm	1	200	27.4	145.2	1.333	10.114
0670738	10" -- 250 x 34.2 mm	1	250	34.2	181.6	2.084	15.777

* Pipes come in standard 13 ft lengths (4 m).

** To calculate exact dimensions of the pipe in imperial inches, divide measurement by 25.4.

*** To calculate the weight of the pipe in kg/m, multiply the measurement by 1.5.

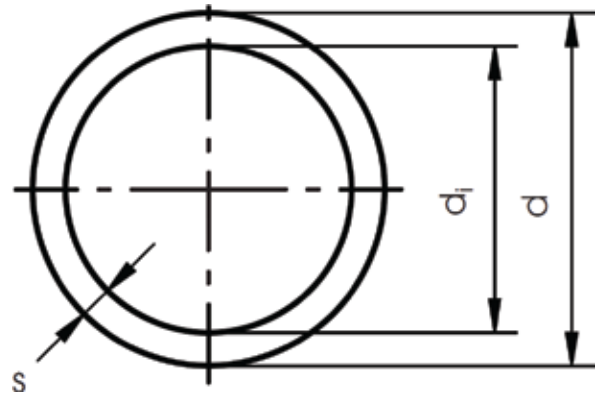
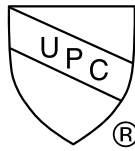
aquatherm greenpipe® pipe SDR 11

Material: **fuviolen® PP-R (80)**

Pipe series: **SDR 11 / S 5**

In accordance with:

- NSF-14
- NSF-51
- NSF-61
- CSA-B137.11
- ICC AC 122
- ICC ESR 1613
- ASTM F 2389
- CFIA #A508



NSF System Certification:

Including fittings, connection pieces, and connection techniques.

Fields of Application:

Potable water, preferably domestic cold. Low pressure installations, such as rainwater, well-casings, food processing, etc.

Pipe *			Diameter**	Wall thickness	Internal diameter	Water content	Weight ***
Art.-No.	Dimension Nom. I.D. -- O.D.	Packing unit	d (mm)	s (mm)	d _i (mm)	gal/ft	lb/ft
0610208	1/2" -- 20 X 1.9 mm	25	20	1.9	16.2	0.017	0.073
0610210	3/4" -- 25 X 2.3 mm	25	25	2.3	20.4	0.026	0.111
0610212	1" -- 32 X 2.9 mm	10	32	2.9	26.2	0.043	0.175
0610214	1.25" -- 40 X 3.7 mm	10	40	3.7	32.6	0.067	0.278
0610216	1.5" -- 50 X 4.6 mm	5	50	4.6	40.8	0.105	0.431
0610218	2" -- 63 X 5.8 mm	5	63	5.8	51.4	0.167	0.680
0610220	2.5" -- 75 X 6.8 mm	5	75	6.8	61.4	0.237	0.948
0610222	3" -- 90 X 8.2 mm	3	90	8.2	73.6	0.343	1.373
0610224	3.5" -- 110 X 10 mm	2	110	10.0	90.0	0.512	2.032
0610226	4" -- 125 X 11.4 mm	1	125	11.4	102.2	0.661	2.637
0610230	6" -- 160 X 14.6 mm	1	160	14.6	130.8	1.082	4.134
0610234	8" -- 200 X 18.2 mm	1	200	18.2	163.6	1.692	6.686
0610238	10" -- 250 X 22.7 mm	1	250	22.7	204.6	2.646	10.416
The following items are supplied in coils:							
0610308	1/2" -- 20 X 1.9 mm	25	20	1.9	16.2	0.017	0.726
0610310	3/4" -- 25 X 2.3 mm	25	25	2.3	20.4	0.026	0.111
0610312	1" -- 32 X 3.9 mm	12.5	32	2.9	26.2	0.043	0.175

* Pipes come in standard 13 ft lengths (4 m).

** To calculate exact dimensions of the pipe in imperial inches, divide measurement by 25.4.

*** To calculate the weight of the pipe in kg/m, multiply the measurement by 1.5.

**climatherm® faser-composite pipe
SDR 11**

Material: **fujiolen® PP-R (80) C-GF**

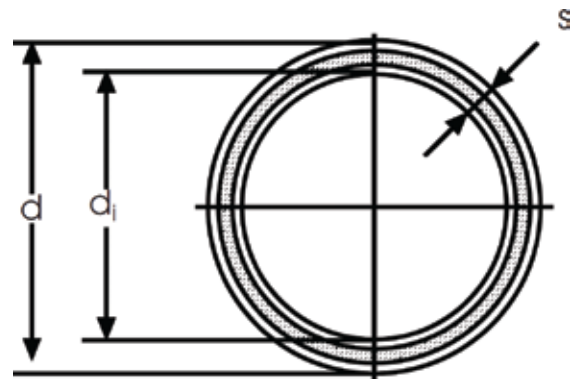
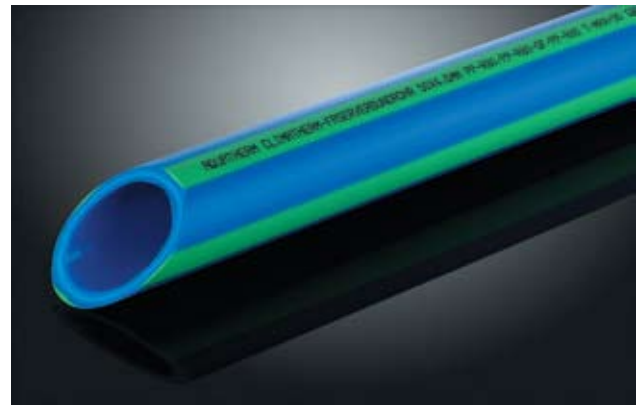
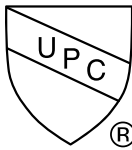
Pipe series:

Art.-Nr. 2070708/2070710 = **SDR 7.4**

Art.-Nr. 2070112-2070138 = **SDR 11**

In accordance with:

- NSF-14
- CSA-B137.11
- ICC AC 122
- ICC ESR 1613
- ASTM F 2389



NSF System Certification:

Including fittings, connection pieces, and connection techniques.

Fields of Application:

Same applications as the standard **climatherm®**, but with higher operating temperatures and greater variations in operating temperature.

Pipe *			Diameter**	Wall thickness	Internal diameter	Water content	Weight ***
Art.-No.	Dimension Nom. I.D. -- O.D.	Packing unit	d (mm)	s (mm)	d _i (mm)	gal/ft	lb/ft
2670708	1/2" -- 20 X 2.8 mm SDR7.4	25	20	2.8	14.4	0.017	0.158
2670710	3/4" -- 25 X 3.5 mm SDR7.4	25	25	3.5	18	0.026	0.246
2670112	1" -- 32 X 4.4 mm SDR11	10	32	2.9	26.2	0.043	0.281
2670114	1.25" -- 40 X 3.7 mm SDR11	10	40	3.7	32.6	0.067	0.434
2670116	1.5" -- 50 X 4.6 mm SDR11	5	50	4.6	40.8	0.105	0.672
2670118	2" -- 63 X 5.8 mm SDR11	5	63	5.8	51.4	0.167	1.061
2670120	2.5" -- 75 X 6.8 mm SDR11	5	75	6.8	61.4	0.237	1.479
2670122	3" -- 90 X 8.2 mm SDR11	3	90	8.2	73.6	0.343	2.142
2670124	3.5" -- 110 X 10 mm SDR11	2	110	10	90	0.512	3.171
2670126	4" -- 125 X 11.4 mm SDR11	1	125	11.4	102.2	0.661	4.114
2670130	6" -- 160 X 14.6 mm SDR11	1	160	14.6	130.8	1.082	6.725
2670134	8" -- 200 X 18.2 mm SDR11	1	200	18.2	163.6	1.692	10.475
2670138	10" -- 250 X 22.7 mm SDR11	1	250	22.7	204.6	2.646	16.301
The following items are supplied in coils (non-faser)							
2610308	1/2" -- 20 x 1.9 mm SDR11	25	20	1.9	16.2	0.017	0.107
2610310	3/4" -- 25 x 2.3 mm SDR11	25	25	2.3	20.4	0.026	0.164
2610312	1" -- 32 X 2.9 mm SDR11	12.5	32	2.9	26.2	0.043	0.261

* Pipes come in standard 13 ft lengths (4 m).

** To calculate exact dimensions of the pipe in imperial inches, divide measurement by 25.4

*** To calculate the weight of the pipe in kg/m, multiply the measurement by 1.5.

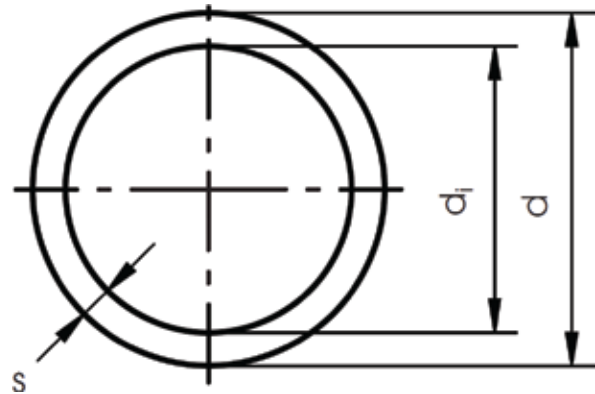
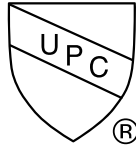
aquatherm greenpipe® pipe SDR 7.4

Material: **fuviolen® PP-R (80)**

Pipe series: **SDR 7.4 / S 2.5**

In accordance with:

- NSF-14
- NSF-51
- NSF-61
- CSA-B137.11
- ICC AC 122
- ICC ESR 1613
- ASTM F 2389
- CFIA #A508



NSF System Certification:

Including fittings, connection pieces, and connection techniques.

Fields of Application:

Moderate pressures with minimal temperature changes. Domestic cold water, food processing, medical gases, etc.

Pipe *			Diameter**	Wall thickness	Internal diameter	Water content	Weight ***
Art.-No.	Dimension Nom. I.D. -- O.D.	Packing unit	d (mm)	s (mm)	d _i (mm)	gal/ft	lb/ft
0610806	3/8" -- 16 X 2.2 mm	25	16	2.2	11.6	0.0085	0.065
0610808	1/2" -- 20 X 2.8 mm	25	20	2.8	14.4	0.0131	0.100
0610810	3/4" -- 25 X 3.5 mm	25	25	3.5	18	0.024	0.156
0610812	1" -- 32 X 4.4 mm	10	32	4.4	23.2	0.0340	0.250
0610814	1.25" -- 40 X 5.5 mm	10	40	5.5	29	0.0531	0.388
0610816	1.5" -- 50 X 6.9 mm	5	50	6.9	36.2	0.0828	0.605
0610818	2" -- 63 X 8.6 mm	5	63	8.6	45.8	0.1325	0.952
0610820	2.5" -- 75 X 10.3 mm	5	75	10.3	54.4	0.1870	1.354
0610822	3" -- 90 X 12.3 mm	3	90	12.3	65.4	0.2703	1.939
0610824	3.5" -- 110 X 15.1 mm	2	110	15.1	79.8	0.4023	2.902
The following items are supplied in coils:							
0610906	3/8" -- 16 X 2.2 mm	25	16	2.2	11.6	0.0085	0.065
0610908	1/2" -- 20 X 2.8 mm	25	20	2.8	14.4	0.0131	0.100

* Pipes come in standard 13 ft lengths (4 m).

** To calculate exact dimensions of the pipe in imperial inches, divide measurement by 25.4.

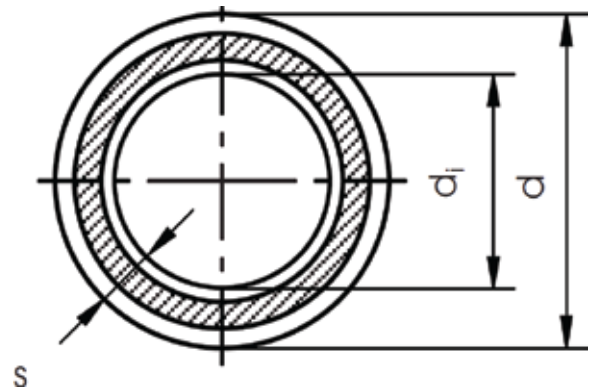
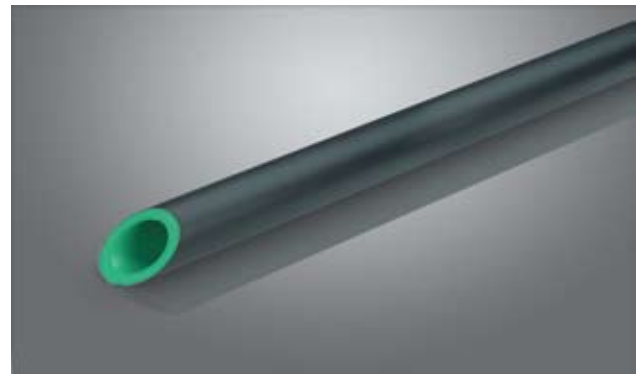
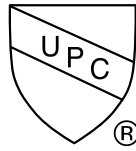
*** To calculate the weight of the pipe in kg/m, multiply the measurement by 1.5.

**aquatherm greenpipe® UV
faser-composite pipe SDR 7.4**

**Material: fujiolen® PP-R (80)
faser-composite**

In accordance with:

- NSF-14
- NSF-51
- NSF-61
- CSA-B137.11
- ICC AC 122
- ICC ESR 1613
- ASTM F 2389
- CFIA #A508



NSF System Certification:

Including fittings, connection pieces and connection techniques.

Fields of Application:

All the same applications as the standard **aquatherm greenpipe®** SDR 7.4 faser-composite, but for installations where the pipe is exposed to UV radiation.

Pipe *			Diameter **	Wall thickness	Internal diameter	Water content	Weight ***
Art.-No.	Dimension Nom. I.D. -- O.D.	Packing unit	d (mm)	s (mm)	di (mm)	gal/ft	lb/ft
0670758	1/2" -- 20 X 2.8 mm	25	20	2.8	14.4	0.013	0.138
0670760	3/4" -- 25 X 3.5 mm	25	25	3.5	18	0.024	0.206
0670762	1" -- 32 X 4.4 mm	10	32	4.4	23.2	0.034	0.318
0670764	1.25" -- 40 X 5.5 mm	10	40	5.5	29	0.053	0.476
0670766	1.5" -- 50 X 6.9 mm	5	50	6.9	36.2	0.083	0.720
0670768	2" -- 63 X 8.6 mm	5	63	8.6	45.8	0.133	1.102
0670770	2.5" -- 75 X 10.3 mm	5	75	10.3	54.4	0.187	1.533
0670772	3" -- 90 X 12.3 mm	3	90	12.3	65.4	0.270	2.207
0670774	3.5" -- 110 X 15.1 mm	2	110	15.1	79.8	0.402	3.306
0670776	4" -- 125 X 17.1 mm	1	125	17.1	90.8	0.521	4.185
0670780	6" -- 160 X 21.9 mm	1	160	21.9	113.2	0.810	6.807
0670784	8" -- 200 X 27 mm	1	200	27.4	141.8	1.271	10.592
0670788	10" -- 250 x 33.8 mm	1	250	34.2	177.6	1.994	16.482

* Pipes come in standard 13 ft lengths (4 m).

** To calculate exact dimensions of the pipe in imperial inches, divide measurement by 25.4.

*** To calculate the weight of the pipe in kg/m, multiply the measurement by 1.5.

**climatherm® UV faser-composite
pipe SDR 11**

Material: **fujiolen® PP-R (80) C-GF**

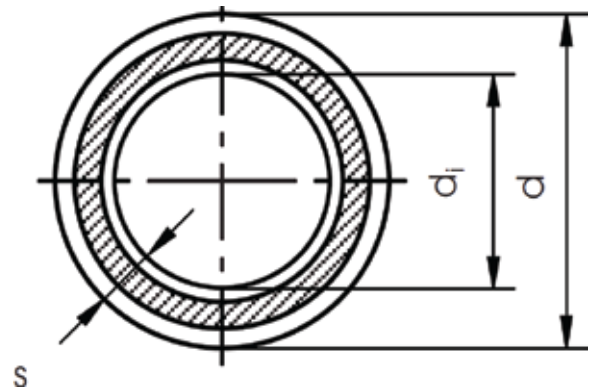
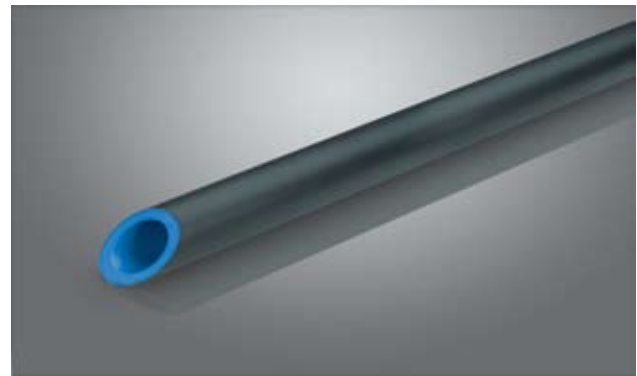
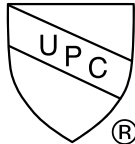
Pipe series:

Art.-Nr. 2070708/2070710 = **SDR 7.4**

Art.-Nr. 2070112-2070138 = **SDR 11**

In accordance with:

- NSF-14
- CSA-B137.11
- ICC AC 122
- ICC ESR 1613
- ASTM F 2389



NSF System Certification:

Including fittings, connection pieces and connection techniques.

Fields of Application:

All the same applications as the standard **climatherm®** SDR 11 faser-composite, but for installations where the pipe is exposed to UV radiation.

Pipe *			Diameter **	Wall thickness	Internal diameter	Water content	Weight ***
Art.-No.	Dimension Nom. I.D. -- O.D.	Packing unit	d (mm)	s (mm)	d _i (mm)	gal/ft	lb/ft
2670758	1/2" -- 20 X 2.8 mm SDR7.4	25	20	2.8	14.4	0.013	0.142
2670760	3/4" -- 25 X 3.5 mm SDR7.4	25	25	3.5	18.0	0.020	0.212
2670162	1" -- 32 X 4.4 mm SDR11	10	32	2.9	26.2	0.043	0.249
2670164	1.25" -- 40 X 5.5 mm SDR11	10	40	3.7	32.6	0.067	0.370
2670166	1.5" -- 50 X 6.9 mm SDR11	5	50	4.6	40.8	0.105	0.551
2670168	2" -- 63 X 8.6 mm SDR11	5	63	5.8	51.4	0.167	0.841
2670170	2.5" -- 75 X 10.3 mm SDR11	5	75	6.8	61.4	0.238	1.141
2670172	3" -- 90 X 12.3 mm SDR11	3	90	8.2	73.6	0.342	1.659
2670174	3.5" -- 110 X 15.1 mm SDR11	2	110	10.0	90.0	0.512	2.464
2670176	4" -- 125 X 17.1 mm SDR11	1	125	11.4	102.2	0.660	3.123
2670180	6" -- 160 X 14.6 mm SDR11	1	160	14.6	130.8	1.032	4.876
2670184	8" -- 200 X 18.2 mm SDR11	1	200	18.2	163.6	1.622	7.542
2670188	10" -- 250 X 22.7 mm SDR11	1	250	22.7	204.6	2.544	11.692

* Pipes come in standard 13 ft lengths (4 m).

** To calculate exact dimensions of the pipe in imperial inches, divide measurement by 25.4.

*** To calculate the weight of the pipe in kg/m, multiply the measurement by 1.5.

aquatherm® - lilac SDR 11
for recycled / reclaimed water

Material: fuviole® PP-R

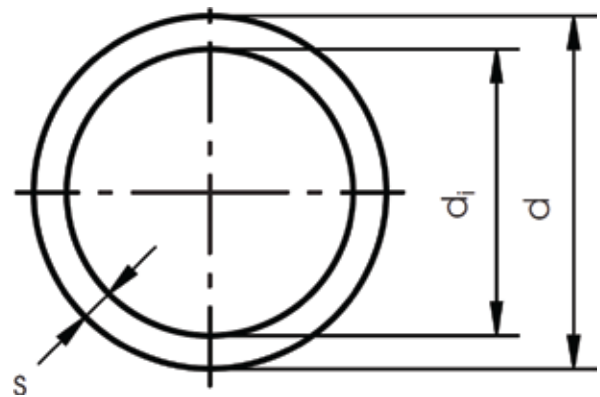
Pipe series:

Art.-Nr. 9010808/9010810 = **SDR 7.4**

Art.-Nr. 9010212-9010238 = **SDR 11**

In accordance with:

- NSF-14
- CSA B 137.11



Fields of Application:

For rainwater and reclaimed water systems.

Pipe *			Diameter **	Wall thickness	Internal diameter	Water content	Weight ***
Art.-No.	Dimension Nom. I.D. -- O.D.	Packing unit	d (mm)	s (mm)	d _i (mm)	gal/ft	lb/ft
9010808	1/2" -- 20 X 2.8 mm SDR7.4	25	20	2.8	14.4	0.013	0.099
9010810	3/4" -- 25 X 3.5 mm SDR7.4	25	25	3.5	18.0	0.020	0.155
9010212	1" -- 32 X 4.4 mm SDR11	10	32	2.9	26.2	0.043	0.175
9010214	1.25" -- 40 X 3.7 mm SDR11	10	40	3.7	32.6	0.067	0.277
9010216	1.5" -- 50 X 4.6 mm SDR11	5	50	4.6	40.8	0.105	0.429
9010218	2" -- 63 X 5.8 mm SDR11	5	63	5.8	51.4	0.167	0.679
9010220	2.5" -- 75 X 6.8 mm SDR11	5	75	6.8	61.4	0.238	0.947
9010222	3" -- 90 X 8.2 mm SDR11	3	90	8.2	73.6	0.342	1.364
9010224	3.5" -- 110 X 10 mm SDR11	2	110	10.0	90.0	0.512	2.023
9010226	4" -- 125 X 11.4 mm SDR11	1	125	11.4	102.2	0.660	2.627
9010230	6" -- 160 X 14.6 mm SDR11	1	160	14.6	130.8	1.081	4.287
9010234	8" -- 200 X 18.2 mm SDR11	1	200	18.2	163.6	1.692	6.686
9010238	10" -- 250 X 22.7 mm SDR11	1	250	22.7	204.6	2.646	10.416

* Pipes come in standard 13 ft lengths (4 m).

** To calculate exact dimensions of the pipe in imperial inches, divide measurement by 25.4.

*** To calculate the weight of the pipe in kg/m, multiply the measurement by 1.5.

aquatherm Advanced

Compatible with:

- aquatherm greenpipe**® pipe SDR 11
- aquatherm greenpipe**® faser-composite pipe SDR 7.4
- climatherm**® faser-composite pipe SDR 11



In accordance with:

- NSF-14
- NSF-51*
- NSF-61*
- CSA-B137.11
- ICC 1613
- ICC AC 122
- ASTM F 2389
- CFIA #A508*

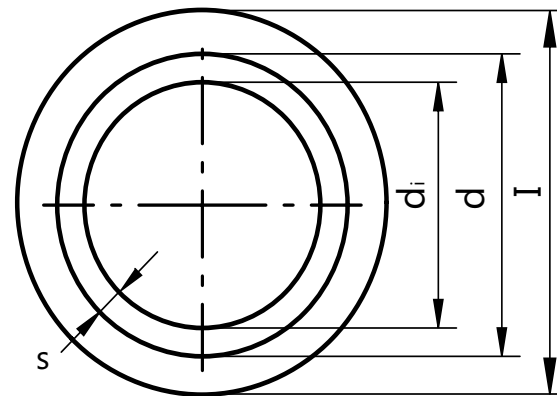
* **aquatherm greenpipe**® only

System Components:

Sheets of fire-resistant insulation and tape. Intended for use with a complete Aquatherm piping system.

Fields of Application:

Intended for use in applications where energy codes require insulation on the pipe.



The values for d , d_i and s correspond to the values given for each piping system. The value for I is found by adding twice the insulation thickness to d for any size of pipe.

aquatherm Advanced wrap (pipe sold separately)

Art.-No.	Dimension Nom. I.D. -- O.D.	Wrap Dimensions	Lengths / package	Insulation Wall
AA0610208	1/2" -- 20 mm	5.50" x 36"	172	5/16"
AA0610210	3/4" -- 25 mm	6.00" x 36"	160	5/16"
AA0610212	1" -- 32 mm	6.50" x 36"	144	5/16"
AA0610214	1.25" -- 40 mm	7.50" x 36"	116	5/16"
AA0610216	1.5" -- 50 mm	9.00" x 36"	104	5/16"
AA0610218	2" -- 63 mm	10.50" x 36"	116	5/16"
AA0610220	2.5" -- 75 mm	12.00" x 36"	104	5/16"
AA0610222	3" -- 90 mm	14.00" x 36"	96	5/16"
AA0610224	3.5" -- 110 mm	16.75" x 36"	96	5/16"
AA0610226	4" -- 125 mm	18.50" x 36"	48	5/16"
AA0610230	6" -- 160 mm	22.50" x 36"	48	5/16"
AA0610234	8" -- 200 mm	25.75" x 36"	48	5/16"
AA0610238	10" -- 250 mm	33.25" x 36"	48	5/16"

Foil tape required for **aquatherm Advanced** installations

Art.-No.	Dimension Nom. I.D. -- O.D.	Total Linear Feet	Packing unit	lb per case
FT25006	(6) Rolls 2" X 150' Foil Tape	900	6 per case	8

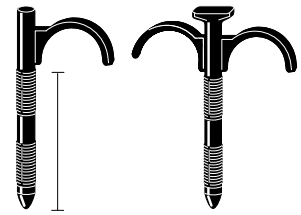
Pricing and packing is per case of 6. Rolls not sold individually.

Accessories



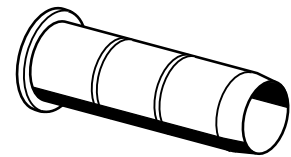
Pipe fastening strap suitable for 3/8" - 1" (16 - 32mm) pipe

Art.-No.	Dimension	Packing unit	Price unit	Price	lb/pc
0060604	Single -- 1 3/8" (45 mm)	50	1		0.011
0060606	Single -- 2.5" (75 mm)	50	1		0.015
0060608	Double -- 1 3/8" (45mm)	50	1		0.017
0060610	Double -- 2.5" (75 mm)	50	1		0.019



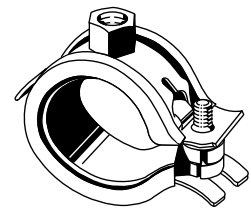
aquatherm pipe support

Art.-No.	Dimension	Packing unit	Price unit	Price	lb/pc
0085110	3/8" -- 16 X 2.2 mm - 11.4 mm	10	1		0.011
0010186	3/8" -- 16 X 2.7 mm - 10.4 mm	10	1		0.011



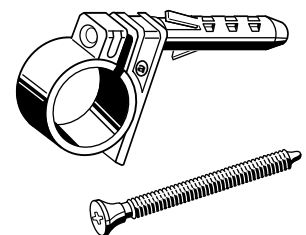
Pipe clamps for aquatherm pipes

Art.-No.	Dimension	Packing unit	Price unit	Price	lb/pc
0060516	3/8" -- 16mm	50	1		0.099
0060520	1/2" -- 20 mm	50	1		0.105
0060525	3/4" -- 25 mm	50	1		0.112
0060532	1" -- 32 mm	50	1		0.132
0060540	1.25" -- 40 mm	50	1		0.147
0060550	1.5" -- 50 mm	50	1		0.174
0060563	2" -- 63 mm	25	1		0.200
0060575	2.5" -- 75 mm	25	1		0.231
0060590	3" -- 90 mm	25	1		0.282
0060594	3.5" -- 110 mm	25	1		0.341
0060595	4" -- 125 mm	25	1		0.467
0060597	6" -- 160 mm	25	1		0.753
0060650	8" -- 200 mm	15	1		-
0060654	10" -- 250 mm	10	1		-



Plastic pipe clamps for aquatherm pipe

Art.-No.	Dimension	Packing unit	Price unit	Price	lb/pc
0060616	3/8" -- 16 mm	1	1		0.015
0060620	1/2" -- 20 mm	1	1		0.017
0060625	3/4" -- 25 mm	1	1		0.035

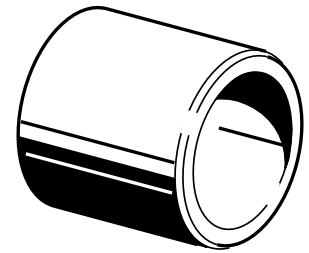


Fittings



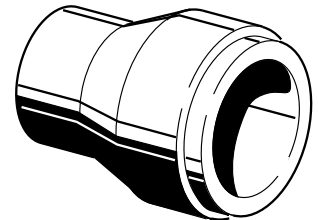
aquatherm greenpipe® coupling

Art.-No.	Dimension Nom. I.D. -- O.D.	Packing unit	Price Unit	Price	lb/pc
0111006	3/8" -- 16 mm	10	1		0.018
0111008	1/2" -- 20 mm	10	1		0.024
0111010	3/4" -- 25 mm	10	1		0.040
0111012	1" -- 32 mm	5	1		0.060
0111014	1.25" -- 40 mm	5	1		0.095
0111016	1.5" -- 50 mm	5	1		0.192
0111018	2" -- 63 mm	1	1		0.276
0111020	2.5" -- 75 mm	1	1		0.459
0111022	3" -- 90 mm	1	1		0.732
0111024	3.5" -- 110 mm	1	1		1.305
0111026	4" -- 125 mm	1	1		1.784



aquatherm greenpipe® bushing

Art.-No.	Dimension Nom. I.D. -- O.D.	Packing unit	Price unit	Price	lb/pc
0111109	3/8" to 1/2" -- 16 to 20 mm	10	1		0.0198
0111110	3/8" to 3/4" -- 16 to 25 mm	10	1		0.0265
0111112	3/4" to 1/2" -- 25 to 20 mm	10	1		0.0287
0111114	1" to 1/2" -- 32 to 20 mm	5	1		0.0353
0111116	1" to 3/4" -- 32 to 25 mm	5	1		0.0463
0111118	1.25" to 1/2" -- 40 to 20 mm	5	1		0.0573
0111120	1.25" to 3/4" -- 40 to 25 mm	5	1		0.0750
0111122	1.25" to 1" -- 40 to 32 mm	5	1		0.0772
0111124	1.5" to 1/2" -- 50 to 20 mm	5	1		0.0970
0111126	1.5" to 3/4" -- 50 to 25 mm	5	1		0.0926
0111128	1.5" to 1" -- 50 to 32 mm	5	1		0.1146
0111130	1.5" to 1.25" -- 50 to 40 mm	5	1		0.1257
0111131	2" to 1/2" -- 63 to 20 mm	1	1		0.1631
0111132	2" to 3/4" -- 63 to 25 mm	1	1		0.1521
0111134	2" to 1" -- 63 to 32 mm	1	1		0.1852
0111136	2" to 1.25" -- 63 to 40 mm	1	1		0.2028
0111138	2" to 1.5" -- 63 to 50 mm	1	1		0.2557
0111143	2.5" to 1/2" -- 75 to 20 mm	1	1		0.2425
0111144	2.5" to 3/4" -- 75 to 25 mm	1	1		0.2403
0111145	2.5" to 1" -- 75 to 32 mm	1	1		0.2888
0111139	2.5" to 1.25" -- 75 to 40 mm	1	1		0.2910
0111140	2.5" to 1.5" -- 75 to 50 mm	1	1		0.3439
0111142	2.5" to 2" -- 75 to 63 mm	1	1		0.4012
0111151	3" to 1.5" -- 90 to 50 mm	1	1		0.4564
0111152	3" to 2" -- 90 to 63 mm	1	1		0.5379
0111153	3" to 2.5" -- 90 to 75 mm	1	1		0.6349
0111155	3.5" to 2" -- 110 to 63 mm	1	1		0.7694
0111157	3.5" to 2.5" -- 110 to 75 mm	1	1		0.8907
0111159	3.5" to 3" -- 110 to 90 mm	1	1		1.1707
0111161	4" to 2.5" -- 125 to 75 mm	1	1		1.1707
0111163	4" to 3" -- 125 to 90 mm	1	1		1.1707
0111165	4" to 3.5" -- 125 to 110 mm	1	1		1.8056



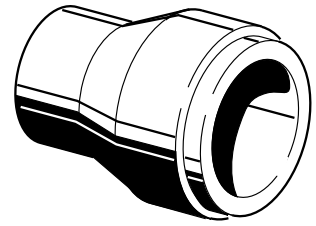
Fittings



aquatherm greenpipe® reducer

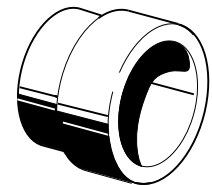
Art.-No.	Dimension Nom. I.D. -- O.D.	Packing unit	Price unit	Price	lb/pc
0111176	6" to 4" – 160 to 125 mm (SDR 7.4)*	1	1		1.7946
0111177	6" to 4" – 160 to 125 mm (SDR 11)*	1	1		2.1605
0111184	8" to 6" – 200 to 160 mm (SDR 7.4)*	1	1		3.4613
0111185	8" to 6" – 200 to 160 mm (SDR 11)*	1	1		2.5794
0111190	10" to 8" – 250 to 200 mm (SDR 7.4)*	1	1		7.0768
0111191	10" to 8" – 250 to 200 mm (SDR 11)*	1	1		5.1368

* Indicates reducers that are butt welded to the pipes.



aquatherm greenpipe® reducing coupling female/female

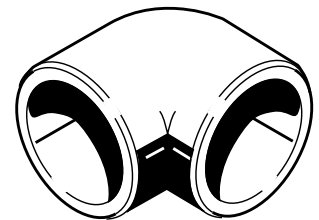
Art.-No.	Dimension Nom. I.D. -- O.D.	Packing unit	Price unit	Price	lb/pc
0111238	2" to 1.5" -- 63 to 50 mm	1	1		0.258
0111242	2.5" to 2" -- 75 to 63 mm	1	1		0.399
0111253	3" to 2.5" -- 90 to 75 mm	1	1		0.628



aquatherm greenpipe® elbow 90°

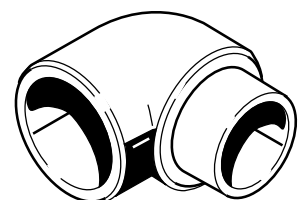
Art.-No.	Dimension Nom. I.D. -- O.D.	Packing unit	Price unit	Price	lb/pc
0112106	3/8" -- 16 mm	10	1		0.024
0112108	1/2" -- 20 mm	10	1		0.040
0112110	3/4" -- 25 mm	10	1		0.055
0112112	1" -- 32 mm	5	1		0.090
0112114	1.25" -- 40 mm	5	1		0.157
0112116	1.5" -- 50 mm	5	1		0.355
0112118	2" -- 63 mm	1	1		0.611
0112120	2.5" -- 75 mm	1	1		0.985
0112122	3" -- 90 mm	1	1		1.768
0112124	3.5" -- 110 mm	1	1		3.113
0112126	4" -- 125 mm	1	1		4.330
0112130	6" -- 160 mm (SDR 7.4)*	1	1		5.739
0112131	6" -- 160 mm (SDR 11)*	1	1		4.319
0112134	8" -- 200 mm (SDR 7.4)*	1	1		25.772
0112135	8" -- 200 mm (SDR 11)*	1	1		17.946
0112138	10" -- 250 mm (SDR 7.4)*	1	1		57.320
0112139	10" -- 250 mm (SDR 11)*	1	1		39.683

* Indicates elbows that are butt welded to the pipes.



aquatherm greenpipe® street 90° female/male

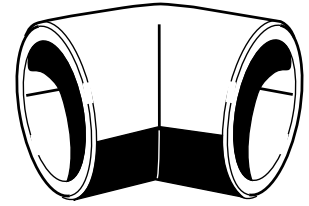
Art.-No.	Dimension Nom. I.D. -- O.D.	Packing unit	Price unit	Price	lb/pc
0112306	3/8" -- 16 mm	10	1		0.024
0112308	1/2" -- 20 mm	10	1		0.040
0112310	3/4" -- 25 mm	10	1		0.055
0112312	1" -- 32 mm	5	1		0.090
0112314	1.25" -- 40 mm	5	1		0.157



Fittings

aquatherm greenpipe® elbow 45°

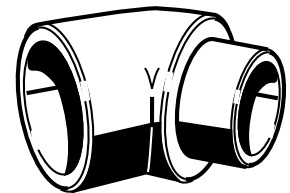
Art.-No.	Dimension Nom. I.D. -- O.D.	Packing unit	Price unit	Price	lb/pc
0112506	3/8" -- 16 mm	10	1		0.020
0112508	1/2" -- 20 mm	10	1		0.031
0112510	3/4" -- 25 mm	10	1		0.042
0112512	1" -- 32 mm	5	1		0.077
0112514	1.25" -- 40 mm	5	1		0.119
0112516	1.5" -- 50 mm	5	1		0.254
0112518	2" -- 63 mm	1	1		0.487
0112520	2.5" -- 75 mm	1	1		0.756
0112522	3" -- 90 mm	1	1		1.230
0112524	3.5" -- 110 mm	1	1		2.194
0112526	4" -- 125 mm	1	1		2.818
0112530	6" -- 160 mm (SDR 7.4)*	1	1		4.184
0112531	6" -- 160 mm (SDR 11)*	1	1		3.034
0112534	8" -- 200 mm (SDR 7.4)*	1	1		18.034
0112535	8" -- 200 mm (SDR 11)*	1	1		12.655
0112538	10" -- 250 mm (SDR 7.4)*	1	1		16.173
0112539	10" -- 250 mm (SDR 11)*	1	1		28.660



* Indicates reducers that are butt welded to the pipes.

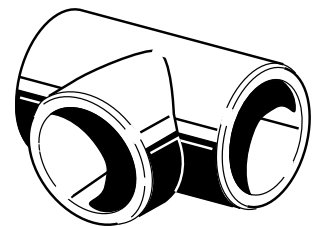
aquatherm greenpipe® street 45° female/male

Art.-No.	Dimension Nom. I.D. -- O.D.	Packing unit	Price unit	Price	lb/pc
0112708	1/2" -- 20 mm	10	1		0.031
0112710	3/4" -- 25 mm	10	1		0.040
0112712	1" -- 32 mm	5	1		0.079
0112714	1.25" -- 40 mm	5	1		0.126



aquatherm greenpipe® tee

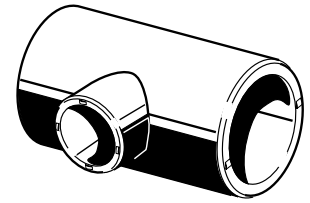
Art.-No.	Dimension Nom. I.D. -- O.D.	Packing unit	Price unit	Price	lb/pc
0113106	3/8" -- 16 mm	10	1		0.033
0113108	1/2" -- 20 mm	10	1		0.053
0113110	3/4" -- 25 mm	10	1		0.073
0113112	1" -- 32 mm	5	1		0.134
0113114	1.25" -- 40 mm	5	1		0.196
0113116	1.5" -- 50 mm	5	1		0.452
0113118	2" -- 63 mm	1	1		0.811
0113120	2.5" -- 75 mm	1	1		1.226
0113122	3" -- 90 mm	1	1		2.134
0113124	3.5" -- 110 mm	1	1		3.788
0113126	4" -- 125 mm	1	1		5.889
0113130	6" -- 160 mm (SDR 7.4)*	1	1		8.051
0113131	6" -- 160 mm (SDR 11)*	1	1		6.111
0113134	8" -- 200 mm (SDR 7.4)*	1	1		8.051
0113135	8" -- 200 mm (SDR 11)*	1	1		15.146
0113138	10" -- 250 mm (SDR 7.4)*	1	1		48.502
0113139	10" -- 250 mm (SDR 11)*	1	1		35.274



Fittings



aquatherm greenpipe® reducing tee

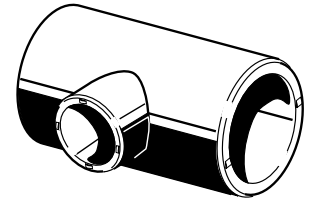


Art.-No.	Dimension Nom. I.D. -- O.D.	Packing unit	Price unit	Price	lb/pc
0113506	1/2" X 3/8" X 3/8" – 20 X 16 X 16 mm	10	1		0.057
0113508	1/2" X 1/2" X 3/8" – 20 X 20 X 16 mm	10	1		0.055
0113510	1/2" X 3/8" X 1/2" – 20 X 16 X 20 mm	10	1		0.055
0113511	1/2" X 1/2" X 3/4" – 20 X 20 X 25 mm	10	1		0.090
0113512	3/4" X 3/8" X 3/8" – 25 X 16 X 16 mm	10	1		0.095
0113514	3/4" X 1/2" X 3/8" – 25 X 20 X 16 mm	10	1		0.090
0113516	3/4" X 3/4" X 3/8" – 25 X 25 X 16 mm	10	1		0.084
0113520	3/4" X 1/2" X 1/2" – 25 X 20 X 20 mm	10	1		0.088
0113522	3/4" X 3/4" X 1/2" – 25 X 25 X 20 mm	10	1		0.079
0113528	1" X 1" X 3/8" – 32 X 32 X 16 mm	5	1		0.121
0113532	1" X 1/2" X 1/2" – 32 X 20 X 20 mm	5	1		0.181
0113534	1" X 1" X 1/2" – 32 X 32 X 20 mm	5	1		0.117
0113538	1" X 3/4" X 3/4" – 32 X 25 X 25 mm	5	1		0.134
0113540	1" X 1" X 3/4" – 32 X 32 X 25 mm	5	1		0.141
0113542	1.25" X 1.25" X 1/2" – 40 X 40 X 20 mm	5	1		0.203
0113544	1.25" X 1.25" X 3/4" – 40 X 40 X 25 mm	5	1		0.196
0113546	1.25" X 1.25" X 1" – 40 X 40 X 32 mm	5	1		0.234
0113547	1.5" X 1.5" X 1/2" – 50 X 50 X 20 mm	5	1		0.406
0113548	1.5" X 1.5" X 3/4" – 50 X 50 X 25 mm	5	1		0.423
0113550	1.5" X 1.5" X 1" – 50 X 50 X 32 mm	5	1		0.406
0113551	1.5" X 1.5" X 1.25" – 50 X 50 X 40 mm	5	1		0.494
0113552	2" X 2" X 1/2" – 63 X 63 X 20 mm	1	1		0.736
0113554	2" X 2" X 3/4" – 63 X 63 X 25 mm	1	1		0.747
0113556	2" X 2" X 1" – 63 X 63 X 32 mm	1	1		0.736
0113558	2" X 2" X 1.25" – 63 X 63 X 40 mm	1	1		0.734
0113560	2" X 2" X 1.5" – 63 X 63 X 50 mm	1	1		0.882
0113561	2.5" X 2.5" X 1/2" – 75 X 75 X 20 mm	1	1		1.184
0113562	2.5" X 2.5" X 3/4" – 75 X 75 X 25 mm	1	1		1.162
0113564	2.5" X 2.5" X 1" – 75 X 75 X 32 mm	1	1		1.155
0113566	2.5" X 2.5" X 1.25" – 75 X 75 X 40 mm	1	1		1.184
0113568	2.5" X 2.5" X 1.5" – 75 X 75 X 50 mm	1	1		1.153
0113570	2.5" X 2.5" X 2" – 75 X 75 X 63 mm	1	1		1.213
0113576	3" X 3" X 1" – 90 X 90 X 32 mm	1	1		1.989
0113578	3" X 3" X 1.25" – 90 X 90 X 40 mm	1	1		1.967
0113580	3" X 3" X 1.5" – 90 X 90 X 50 mm	1	1		2.218
0113582	3" X 3" X 2" – 90 X 90 X 63 mm	1	1		2.017
0113584	3" X 3" X 2.5" – 90 X 90 X 75 mm	1	1		2.293
0113586	3.5" X 3.5" X 2" – 110 X 110 X 63 mm	1	1		3.688
0113588	3.5" X 3.5" X 2.5" – 110 X 110 X 75 mm	1	1		3.587
0113590	3.5" X 3.5" X 2.5" – 110 X 110 X 90 mm	1	1		3.631
0113592	4" X 4" X 2.5" – 125 X 125 X 75 mm	1	1		3.585
0113594	4" X 4" X 3" – 125 X 125 X 90 mm	1	1		3.631
0113596	4" X 4" X 3.5" – 125 X 125 X 110 mm	1	1		5.794

Fittings



aquatherm greenpipe® reducing tee



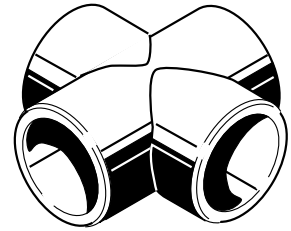
Art.-No.	Dimension Nom. I.D. -- O.D.	Packing unit	Price unit	Price	lb/pc
0113600	6" X 6" X 2.5" -- 160 x 160 x 75 mm (SDR 7.4)	1	1		9.731
0113601	6" X 6" X 2.5" -- 160 x 160 x 75 mm (SDR 11)	1	1		6.923
0113602	6" X 6" X 3" -- 160 x 160 x 90 mm (SDR 7.4)	1	1		9.954
0113603	6" X 6" X 3" -- 160 x 160 x 90 mm (SDR 11)	1	1		7.002
0113608	8" X 8" X 2.5" -- 200 x 200 x 75 mm (SDR 7.4)	1	1		15.675
0113609	8" X 8" X 2.5" -- 200 x 200 x 75 mm (SDR 11)	1	1		11.649
0113610	8" X 8" X 3" -- 200 x 200 x 90 mm (SDR 7.4)	1	1		16.623
0113611	8" X 8" X 3" -- 200 x 200 x 90 mm (SDR 11)	1	1		11.393
0113612	8" X 8" X 3.5" -- 200 x 200 x 110 mm (SDR 7.4)	1	1		16.149
0113613	8" X 8" X 3.5" -- 200 x 200 x 110 mm (SDR 11)	1	1		12.452
0113614	8" X 8" X 4" -- 200 x 200 x 125 mm (SDR 7.4)	1	1		16.854
0113615	8" X 8" X 4" -- 200 x 200 x 125 mm (SDR 11)	1	1		12.756
0113624	10" X 10" X 2.5" -- 250 x 250 x 75 mm (SDR 7.4)	1	1		36.850
0113625	10" X 10" X 2.5" -- 250 x 250 x 75 mm (SDR 11)	1	1		26.455
0113626	10" X 10" X 3" -- 250 x 250 x 90 mm (SDR 7.4)	1	1		37.002
0113627	10" X 10" X 3" -- 250 x 250 x 90 mm (SDR 11)	1	1		26.455
0113628	10" X 10" X 3.5" -- 250 x 250 x 110 mm (SDR 7.4)	1	1		37.002
0113629	10" X 10" X 3.5" -- 250 x 250 x 110 mm (SDR 11)	1	1		28.660
0113630	10" X 10" X 4" -- 250 x 250 x 125 mm (SDR 7.4)	1	1		37.615
0113631	10" X 10" X 4" -- 250 x 250 x 125 mm (SDR 11)	1	1		26.455

Fittings



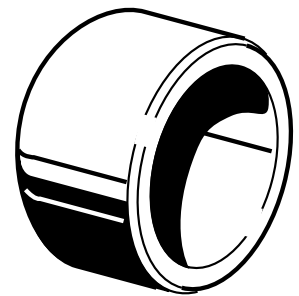
aquatherm greenpipe® cross

Art.-No.	Dimension Nom. I.D. -- O.D.	Packing unit	Price unit	Price	lb/pc
0113708	1/2" -- 20 mm	10	1		0.057
0113710	3/4" -- 25 mm	10	1		0.079
0113712	1" -- 32 mm	5	1		0.148
0113714	1.25" -- 40 mm	5	1		0.231



aquatherm greenpipe® end cap

Art.-No.	Dimension Nom. I.D. -- O.D.	Packing unit	Price unit	Price	lb/pc
0114106	3/8" -- 16 mm	10	1		0.020
0114108	1/2" -- 20 mm	10	1		0.024
0114110	3/4" -- 25 mm	10	1		0.020
0114112	1" -- 32 mm	5	1		0.051
0114114	1.25" -- 40 mm	5	1		0.093
0114116	1.5" -- 50 mm	5	1		0.174
0114118	2" -- 63 mm	1	1		0.320
0114120	2.5" -- 75 mm	1	1		0.529
0114122	3" -- 90 mm	1	1		0.836
0114124	3.5" -- 110 mm	1	1		1.360
0114126	4" -- 125 mm	1	1		1.889
0114130	6" -- 160 mm (SDR 7.4)	1	1		1.889
0114131	6" -- 160 mm (SDR 11)	1	1		1.658
0114134	8" -- 200 mm (SDR 7.4)	1	1		3.064
0114135	8" -- 200 mm (SDR 11)	1	1		2.205
0114138	10" -- 250 mm (SDR 7.4)	1	1		5.622
0114139	10" -- 250 mm (SDR 11)	1	1		4.431



aquatherm greenpipe® cross-over

Art.-No.	Dimension Nom. I.D. -- O.D.	Packing unit	Price unit	Price	lb/pc
0116106	3/8" -- 16 mm	10	1		0.086
0116108	1/2" -- 20 mm	10	1		0.143
0116110	3/4" -- 25 mm	10	1		0.212
0116112	1" -- 32 mm	5	1		0.340

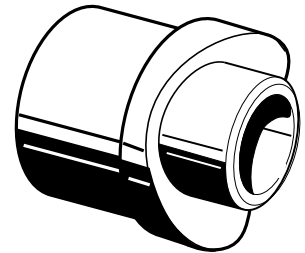


Fittings



aquatherm greenpipe® fusion outlet

Art.-No.	Dimension Nom. I.D. -- O.D. (Pipe X Saddle)	Packing unit	Price unit	Price	lb/pc
0115156	1.25" X 1/2" -- 40 X 20 mm	5	1		0.033
0115158	1.25" X 3/4" -- 40 X 25 mm	5	1		0.037
0115160	1.5" X 1/2" -- 50 X 20 mm	5	1		0.040
0115162	1.5" X 3/4" -- 50 X 25 mm	5	1		0.042
0115164	2 X 1/2" -- 63 X 20 mm	5	1		0.040
0115166	2" X 3/4" -- 63 X 25 mm	5	1		0.042
0115168	2" X 1" -- 63 X 32 mm	5	1		0.057
0115170	2.5" X 1/2" -- 75 X 20 mm	5	1		0.040
0115172	2.5" X 3/4" -- 75 X 25 mm	5	1		0.042
0115174	2.5" X 1" -- 75 X 32 mm	5	1		0.060
0115175	2.5" X 1.25" -- 75 X 40 mm	5	1		0.106
0115176	3" X 1/2" -- 90 X 20 mm	5	1		0.042
0115178	3" X 3/4" -- 90 X 25 mm	5	1		0.042
0115180	3" X 1" -- 90 X 32 mm	5	1		0.060
0115181	3" X 1.25" -- 90 X 40 mm	5	1		0.106
0115182	3.5" X 1/2" -- 110 X 20 mm	5	1		0.042
0115184	3.5" X 3/4" -- 110 X 25 mm	5	1		0.044
0115186	3.5" X 1" -- 110 X 32 mm	5	1		0.062
0115188	3.5" X 1.25" -- 110 X 40 mm	5	1		0.108
0115189	3.5" X 1.5" -- 110 X 50 mm	5	1		0.064
0115190	4" X 1/2" -- 125 X 20 mm	5	1		0.042
0115192	4" X 3/4" -- 125 X 25 mm	5	1		0.046
0115194	4" X 1" -- 125 X 32 mm	5	1		0.066
0115196	4" X 1.25" -- 125 X 40 mm	5	1		0.112
0115197	4" X 1.5" -- 125 X 50 mm	5	1		0.064
0115198	4" X 2" -- 125 X 63 mm	5	1		0.064
0115206	6" X 1/2" -- 160 X 20 mm	5	1		0.055
0115208	6" X 3/4" -- 160 X 25 mm	5	1		0.057
0115210	6" X 1" -- 160 X 32 mm	5	1		0.075
0115212	6" X 1.25" -- 160 X 40 mm	5	1		0.126
0115214	6" X 1.5" -- 160 X 50 mm	5	1		0.119
0115216	6" X 2" -- 160 X 63 mm	5	1		-
0115228	8-10" X 1/2" -- 200-250/20 mm	5	1		-
0115229	8-10" X 3/4" -- 200-250/25 mm	5	1		-
0115230	8-10" X 1" -- 200-250/32 mm	5	1		-
0115231	8" X 1.25" -- 200/40 mm	5	1		-
0115232	8" X 1.5" -- 200/50 mm	5	1		-
0115233	8" X 2" -- 200/63 mm	5	1		-
0115251	10" X 1.25" -- 250/40 mm	5	1		-
0115252	10" X 1.5" -- 250/50 mm	5	1		-
0115253	10" X 2" -- 250/63 mm	5	1		-



With weld-on surface and additional weld-in socket for fusion with the inner pipe wall.

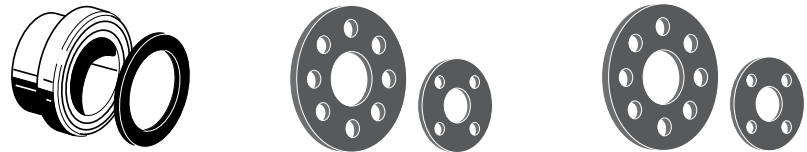
The necessary welding tools for **aquatherm greenpipe®** fusion outlets are described on page 6.40:

- Welding tools Art.-No. 0050614 - 0050640
- The **aquatherm** drill bit Art.-No. 0050940 - 0050948

Flanges

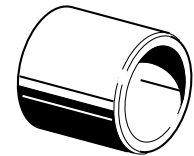
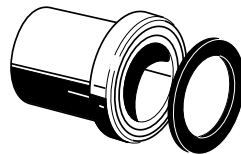


aquatherm greenpipe® flange adapter aquatherm flange ring



aquatherm Dimension Nom. ID. -- O.D.	nominal flange size	Flange adapter		Flange ring American bolt pattern			Flange ring European bolt pattern	
		Art. No.	lb/pc	Art. No.	Number of bolt holes	lb/pc	Art. No.	lb/pc
1" -- 32 mm	1.25"	0115512	0.068	3315712	4	2.73	0115712	1.010
1.25" -- 40 mm	1.5"	0115514	0.097	3315714	4	2.73	0115714	1.561
1.5" -- 50 mm	1.5"	0115516	0.134	3315716	4	3.52	0115716	1.715
2" -- 63 mm	2"	0115518	0.220	3315718	4	4.42	0115718	2.006
2.5" -- 75 mm	2.5"	0115520	0.315	3315720	4	7.22	0115720	2.557
3" -- 90 mm	3"	0115522	0.556	3315722	4	8.32	0115722	3.064
3.5" -- 110 mm	3.5"	0115524	0.721	-	-	-	0115724	3.289
4" -- 125 mm	4"	0115527	2.888	See Table Below			0115726	3.289
4" -- 125 mm	6"	0115527	2.888	3315730	8	15.14	-	-
6" -- 160 mm SDR 7.4	6"	0115530	2.564	3315730	8	15.14	0115730	7.998
6" -- 160 mm SDR 11	6"	0115531	2.103	3315730	8	15.14	0115730	7.998
8" -- 200 mm SDR 7.4	8"	0115534	4.409	3315734	8	22.79	0115734	10.472
8" -- 200 mm SDR 11	8"	0115535	4.409	3315734	8	22.79	0115734	10.472
10" -- 250 mm SDR 7.4	10"	0115538	4.409	3315738	12	33.20	0115738	15.644
10" -- 250 mm SDR 11	10"	0115539	4.409	3315738	12	33.20	0115738	15.644

All flange adapters and flange rings are sold separately and in a single packing unit.



aquatherm Dimension Nom. ID. -- O.D.	nominal flange size	Flange adapter connects to coupling		Flange ring American bolt pattern		
		Art. No.	lb/pc	Art. No.	Number of bolt holes	lb/pc
4" -- 125 mm	4"	0115526	0.068	3315726	8	11.22

Art.-No. 0115526 (pictured left) must be paired with a coupling Art.-No 0111026 (pictured above, sold separately)

aquatherm greenpipe® pump flange adapter ring American bolt pattern

Art.-No.	Dimension Nom. I.D. -- O.D.	Packing unit	Price unit	Price	lb/pc
5515172	3/4" x 1" -- 25 x 32 mm	1	1		-
5515714	1.25" x 1" -- 40 x 32 mm	1	1		-

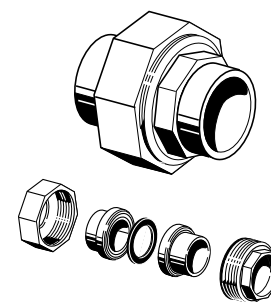


Couplings



aquatherm greenpipe® union with brass nut

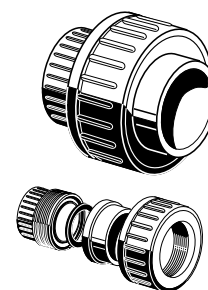
Art.-No.	Dimension Nom. I.D. -- O.D.	Packing unit	Price unit	Price	lb/pc
0115812	1" -- 32 mm	1	1		1.098
0115814	1.25" -- 40 mm	1	1		1.856
0115816	1.5" -- 50 mm	1	1		2.083
0115818	2" -- 63 mm	1	1		3.397
0115820	2.5" -- 75 mm	1	1		4.497



Brass coupling screw with two PP-R flange adapters including washer.

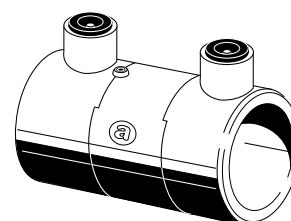
aquatherm greenpipe® union with PP-R nut

Art.-No.	Dimension Nom. I.D. -- O.D.	Packing unit	Price unit	Price	lb/pc
0115838	1/2" -- 20 mm	1	1		0.079
0115840	3/4" -- 25 mm	1	1		0.130
0115842	1" -- 32 mm	1	1		0.194
0115844	1.25" -- 40 mm	1	1		0.295
0115846	1.5" -- 50 mm	1	1		0.373
0115848	2" -- 63 mm	1	1		0.644
0115850	2.5" -- 75 mm	1	1		-



aquatherm greenpipe® electrofusion socket

Art.-No.	Dimension Nom. I.D. -- O.D.	Packing unit	Price unit	Price	lb/pc
0117208	1/2" -- 20 mm	1	1		0.097
0117210	3/4" -- 25 mm	1	1		0.117
0117212	1" -- 32 mm	1	1		0.159
0117214	1.25" -- 40 mm	1	1		0.216
0117216	1.5" -- 50 mm	1	1		0.306
0117218	2" -- 63 mm	1	1		0.496
0117220	2.5" -- 75 mm	1	1		0.754
0117222	3" -- 90 mm	1	1		1.089
0117224	3.5" -- 110 mm	1	1		1.797
0117226	4" -- 125 mm	1	1		2.410
0117230	6" -- 160 mm	1	1		3.900



Tool:
aquatherm greenpipe®
electrofusion device (Art.-
No. 50175)

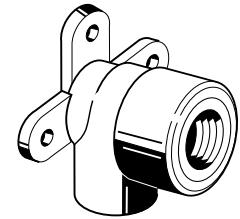
aquatherm greenpipe®
peeling tool
(Art.-No. 0050558 -
0050580)required

Mounting Devices



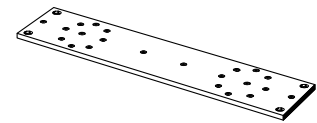
aquatherm greenpipe® back plate elbow threaded

Brass Art.-No. (NPT)	Stainless Steel Art.-No. (ISO)	Dimension	Packing unit	Price unit	lb/pc
0120106	-	(3/8" -- 16 mm) X 1/2" F	10	1	0.187
0120108	920108	(1/2" -- 20 mm) X 1/2" F	10	1	0.187
0120110	920110	(1/2" -- 20 mm) X 3/4" F	10	1	0.245
0120112	920112	(3/4" -- 25 mm) X 3/4" F	10	1	0.245
0120113	920113	(3/4" -- 25 mm) X 1/2" F	10	1	0.201



Mounting plate galvanized; to fix back plate elbows as double connection

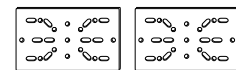
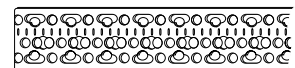
Art.-No.	Dimension	Packing unit	Price unit	Price	lb/pc
0060010	8.7/5.9/3.2 in 220/150/80 mm	1	1		0.487



not suitable for connection with sound insulation plate (Art.-No. 0079080)

Mounting rail galvanized; to fix back plate elbows including 2 fixing plates and 4 screws

Art.-No.	Dimension	Packing unit	Price unit	Price	lb/pc
0079090	length = 22" -- 560 mm	1	1		1.162

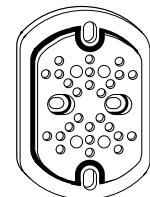


not suitable for connection with sound insulation plate (Art.-No. 0079080)

Sound insulation plate for aquatherm greenpipe® back plate elbow

Art.-No.	Dimension	Packing unit	Price unit	Price	lb/pc
0079080		2	1		0.249

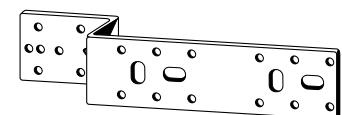
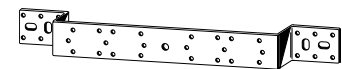
including two screws each



Mounting Rail (double and single)

Art.-No.	Dimension	Packing unit	Price unit	Price	lb/pc
0079095	double	2	1		0.908
0079096	single	2	1		-

galvanized, for fixing of back plate elbows

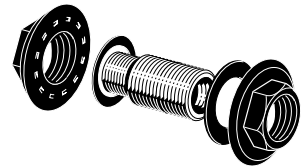


Threaded Connections



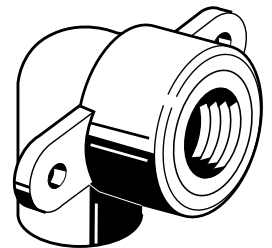
aquatherm dry construction wall fitting ISO

Art.-No.	Dimension	Packing unit	Price unit	Price	lb/pc
0120114	1/2"	10	1		0.277



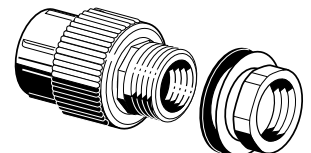
aquatherm greenpipe® wing back 90° elbow

Brass Art.-No. (NPT)	Stainless Steel Art.-No. (ISO)	Dimension	Packing unit	Price unit	lb/pc
0120156	-	16 mm x 1/2" F	10	1	0.185
0120158	920158	20 mm x 1/2" F	10	1	0.179



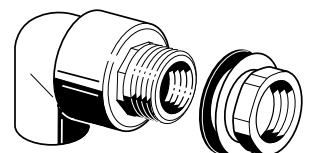
aquatherm greenpipe® ISO transition piece with counternut, gasket and tension washer

Art.-No.	Dimension	Packing unit	Price unit	Price	lb/pc
0120204	20 mm x 1/2" F x 3/4" M	10	1		0.450



aquatherm greenpipe® ISO transition elbow with counternut, gasket and tension washer

Art.-No.	Dimension	Packing unit	Price unit	Price	lb/pc
0120206	16 mm x 1/2" F x 3/4" M	1	1		0.437
0120208	20 mm x 1/2" F x 3/4" M	1	1		0.441
0120209	25 mm x 1/2" F x 3/4" M	1	1		0.454



Threaded Connections



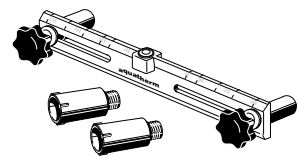
aquatherm greenpipe® ISO plug for pressure tests *with gasket*

Art.-No.	Dimension	Packing unit	Price unit	Price	lb/pc
0050708	1/2" M	1	1		0.046
0050710	3/4" M	1	1		0.059



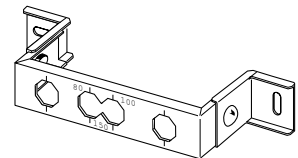
aquatherm assembling jig

Art.-No.	Dimension	Packing unit	Price unit	Price	lb/pc
0050700	-	1	1		-



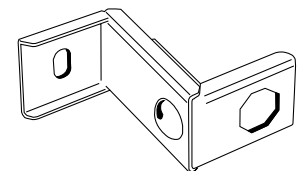
Mounting unit *twin*

Art.-No.	Dimension	Packing unit	Price unit	Price	lb/pc
0060110	3.2/4/5.9 in 80/100/150 mm	1	1		1.415



Mounting unit *single*

Art.-No.	Dimension	Packing unit	Price unit	Price	lb/pc
0060115	-	1	1		0.606



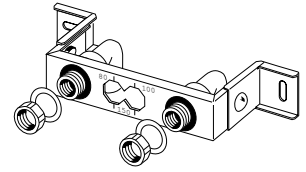
Threaded Connections



Mounting unit with **aquatherm greenpipe®** ISO transition elbow (Art.-No. 20208)

Art.-No.	Dimension	Packing unit	Price unit	Price	lb/pc
0060150	-	1	1		2.301

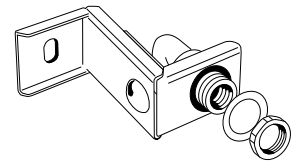
with counternut, gasket and tension washer



Mounting unit with 1 **aquatherm greenpipe®** ISO transition elbow (Art.-No. 0120208)

Art.-No.	Dimension	Packing unit	Price unit	Price	lb/pc
0060155	-	1	1		1.166

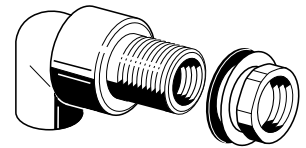
with counternut, gasket and tension washer



aquatherm greenpipe® ISO transition elbow for dry construction

Art.-No.	Dimension	Packing unit	Price unit	Price	lb/pc
0120210	20 mm x 1/2" F x 3/4" M	10	1		0.487

with 30 mm thread, counternut, gasket and tension washer

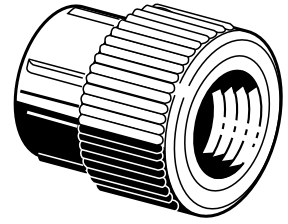


Transition Pieces



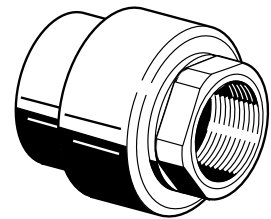
aquatherm greenpipe® transition piece round

Brass Art.-No. (NPT)	Stainless Steel Art.-No. (ISO)	Dimension Pipe (Nom. I.D. -- O.D.) X Thread Type	Packing unit	Price unit	lb/pc
0121006	-	(3/8" -- 16mm) X 1/2" F	10	1	0.156
0121008	921008	(1/2" -- 20mm) X 1/2" F	10	1	0.154
0121010	921010	(1/2" -- 20mm) X 3/4" F	10	1	0.198
0121011	921011	(3/4" -- 25mm) X 1/2" F	10	1	0.156
0121012	921012	(3/4" -- 25mm) X 3/4" F	10	1	0.189
0121013	921013	(1" -- 32mm) X 3/4" F	5	1	0.205



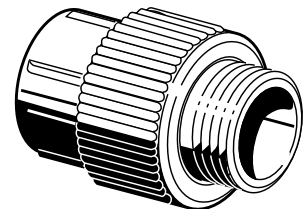
aquatherm greenpipe® NPT transition piece with hex-shaped threaded transition

Brass Art.-No. (NPT)	Stainless Steel Art.-No. (NPT)	Dimension Pipe (Nom. I.D. -- O.D.) X Thread Type	Packing unit	Price unit	lb/pc
0121106	-	(3/8" -- 16 mm) X 1/2" F	10	1	0.192
0121108	-	(1/2" -- 20 mm) X 1/2" F	10	1	0.192
0121110	-	(1/2" -- 20 mm) X 3/4" F	10	1	0.249
0121111	-	(3/4" -- 25 mm) X 1/2" F	10	1	0.192
0121112	-	(3/4" -- 25 mm) X 3/4" F	10	1	0.245
0121113	-	(1" -- 32 mm) X 3/4" F	5	1	0.251
0121114	1121114	(1" -- 32 mm) X 1" F	5	1	5.269
0121115	1121115	(1.25" -- 40 mm) X 1" F	5	1	5.423
0121116	1121116	(1.25" -- 40 mm) X 1.25" F	5	1	0.844
0121117	1121117	(1.5" -- 50 mm) X 1.25" F	5	1	0.884
0121118	1121118	(1.5" -- 50 mm) X 1.5" F	5	1	0.981
0121119	1121119	(2" -- 63 mm) X 1.5" F	1	1	1.032
0121120	-	(2" -- 63 mm) X 2" F	1	1	1.433
0121122	-	(2.5" -- 75 mm) X 2" F	1	1	1.479



aquatherm greenpipe® transition piece round

Brass Art.-No. (NPT)	Stainless Steel Art.-No. (ISO)	Dimension Pipe (Nom. I.D. -- O.D.) X Thread Type	Packing unit	Price unit	lb/pc
0121206	-	(3/8" -- 16mm) X 1/2" M	10	1	0.216
0121208	921208	(1/2" -- 20mm) X 1/2" M	10	1	0.212
0121210	921210	(1/2" -- 20mm) X 3/4" M	10	1	0.238
0121211	921211	(3/4" -- 25mm) X 1/2" M	10	1	0.218
0121212	921212	(3/4" -- 25mm) X 3/4" M	10	1	0.238
0121213	921213	(1" -- 32mm) X 3/4" M	5	1	0.249

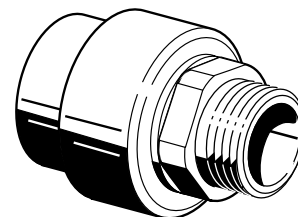


Transition Pieces



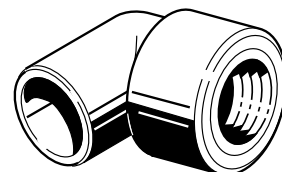
aquatherm greenpipe® NPT transition piece *hex-shaped threaded transition*

Art.-No.	Dimension Pipe (Nom. I.D. -- O.D.) X Thread Type	Packing unit	Price unit	Price	lb/pc
0121306	(3/8" -- 16mm) X 1/2" M	10	1		0.265
0121308	(1/2" -- 20mm) X 1/2" M	10	1		0.260
0121310	(1/2" -- 20mm) X 3/4" M	10	1		0.284
0121312	(3/4" -- 25mm) X 3/4" M	10	1		0.282
0121314	(1" -- 32mm) X 1" M	5	1		0.538
0121316	(1" -- 32mm) X 1.25" M	5	1		0.787
0121317	(1.25" -- 40mm) X 1" M	5	1		0.551
0121318	(1.25" -- 40mm) X 1.25" M	5	1		0.802
0121319	(1.5" -- 50mm) X 1.25" M	5	1		0.862
0121320	(1.5" -- 50mm) X 1.5" M	5	1		1.058
0121321	(2" -- 63mm) X 1.5" M	1	1		1.153
0121322	(2" -- 63mm) X 2" M	1	1		1.554
0121323	(2.5" -- 75mm) X 2" M	1	1		1.660
0121324	(2.5" -- 75mm) X 2.5" M	1	1		2.258
0121325	(3" -- 90mm) X 3" M	1	1		3.373
0121327	(3.5" -- 110mm) X 4" M	1	1		6.208



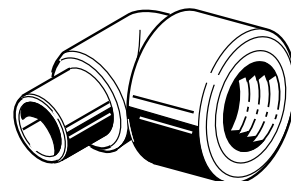
aquatherm greenpipe® transition elbow

Brass Art.-No. (NPT)	Stainless Steel Art.-No. (ISO)	Dimension	Packing unit	Price unit	lb/pc
0123006	-	(3/8" -- 16mm) X 1/2" F	10	1	0.181
0123008	923008	(1/2" -- 20mm) X 3/4" F	10	1	0.238
0123010	923010	(1/2" -- 20mm) X 1/2" F	10	1	0.179
0123012	923012	(3/4" -- 25mm) X 3/4" F	10	1	0.234
0123014	923014	(3/4" -- 25mm) X 1/2" F	10	1	0.192
0123016	923016	(1" -- 32mm) X 3/4" F	5	1	0.243
	(NPT)				
0123018	1123018	(1" -- 32mm) X 1" F	5	1	0.573



aquatherm greenpipe® NPT transition elbow *(male/female)*

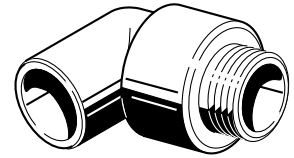
Art.-No.	Dimension	Packing unit	Price unit	Price	lb/pc
0123208	(1/2" -- 20mm) X 1/2" F	10	1		0.176



Transition Pieces

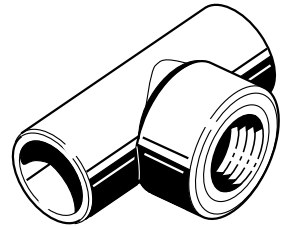
aquatherm greenpipe® transition elbow (male)

Brass Art.-No. (NPT)	Stainless Steel Art.-No. (ISO)	Dimension	Packing unit	Price unit	lb/pc
0123504	-	(3/8" -- 16mm) X 1/2" M	10	1	0.236
0123506	923506	(1/2" -- 20mm) X 1/2" M	10	1	0.240
0123508	923508	(1/2" -- 20mm) X 3/4" M	10	1	0.282
0123510	923510	(3/4" -- 25mm) X 3/4" M	10	1	0.273
0123512	923512	(1" -- 32mm) X 3/4" M	5	1	0.293
0123514	-	(1" -- 32mm) X 1" M	5	1	0.573



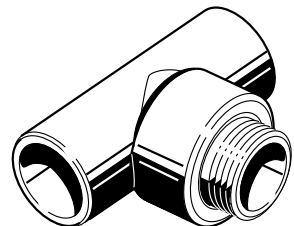
aquatherm greenpipe® transition tee (female)

Brass Art.-No. (NPT)	Stainless Steel Art.-No. (ISO)	Dimension	Packing unit	Price unit	lb/pc
0125004	-	(3/8" -- 16mm) X (3/8" -- 16mm) X 1/2" F	10	1	1.161
0125006	925006	(1/2" -- 20mm) X (1/2" -- 20mm) X 1/2" F	10	1	1.161
0125008	925008	(1/2" -- 20mm) X (1/2" -- 20mm) X 3/4" F	10	1	1.339
0125010	925010	(3/4" -- 25mm) X (3/4" -- 25mm) X 1/2" F	10	1	1.339
0125012	925012	(3/4" -- 25mm) X (3/4" -- 25mm) X 3/4" F	10	1	1.339
0125014	925014	(1" -- 32mm) X (1" -- 32mm) X 3/4" F	5	1	1.693
	(NPT)				
0125016	1125016	(1" -- 32mm) X (1" -- 32mm) X 1" F	5	1	1.693
0125022	-	(1.5" -- 50 mm) X (1.5" -- 50 mm) X 1" F	5	1	-



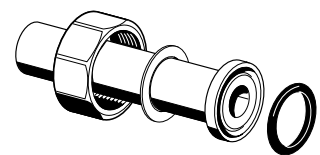
aquatherm greenpipe® NPT transition tee (male)

Art.-No.	Dimension	Packing unit	Price unit	Price	lb/pc
0125506	(1/2" -- 20mm) X 1/2" M X (1/2" -- 20mm)	10	1		0.254



aquatherm greenpipe® ISO pump adapter with joint ring length: 100 mm

Art.-No.	Dimension	Packing unit	Price unit	Price	lb/pc
0126708	1/2" - 20 mm / nut G 1"	1	1		0.182
0126710	3/4" -- 25 mm / nut G 1 1/4"	1	1		0.257
0126712	7/8"-- 30 mm / nut G 1 1/2"	1	1		0.352
0126714	1.25"--40 mm / nut G 2"	1	1		0.564
0126716	1.5"--50 mm / nut G 2 1/4"	1	1		0.961
0126718	2" -- 63 mm / nut G 2 3/4"	1	1		1.192
0126720	2.5" -- 75 mm / nut G 3 1/2"	1	1		2.023
0126722	3" -- 90 mm / nut G 4"	1	1		2.729

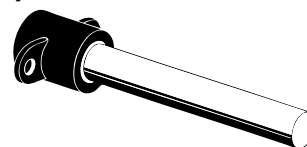


Transition Pieces



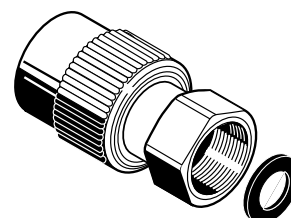
aquatherm greenpipe® transition to compression fitting (PP-R to Brass)

Art.-No.	Dimension	Packing unit	Price unit	Price	lb/pc
0199031	1/2" (20 mm) PPR to 3/8" Compression	5	1		2.204



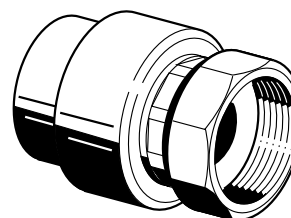
aquatherm greenpipe® ISO water meter connecting union *with gasket*

Art.-No.	Dimension	Packing unit	Price unit	Price	lb/pc
0126808	(1/2" -- 20mm) X nut G 3/4"	1	1		0.332
0126810	(3/4" -- 25mm) X nut G 3/4"	1	1		0.332
0126812	(1" -- 32mm) X nut G 3/4"	1	1		0.357



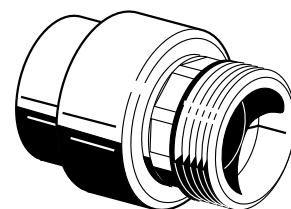
aquatherm greenpipe® transition joint ISO-Standard

Art.-No.	Dimension	Packing unit	Price unit	Price	lb/pc
0127010	(1/2" -- 20mm) X nut G 1"	10	1		0.401
0127011	(3/4" -- 25mm) X nut G 1"	10	1		0.407
0127012	(3/4" -- 25mm) X nut G 1.25"	10	1		0.557
0127013	(1" -- 32mm) X nut G 1.25"	5	1		0.599
0127014	(1" -- 32mm) X nut G 1.5"	5	1		0.963
0127015	(1.25" -- 40mm) X nut G 1.5"	5	1		0.996
0127016	(1.25" -- 40mm) X nut G 2"	5	1		1.554
0127017	(2" -- 50mm) X nut G 2"	5	1		1.593
0127018	(2" -- 50mm) X nut G 2.25"	5	1		2.026
0127019	(2" -- 63mm) X nut G 2.25"	1	1		2.096
0127020	(2" -- 63mm) X nut G 2.75"	1	1		2.724
0127021	(2.5" -- 75mm) X nut G 2.75"	1	1		2.777
0127022	(2.5" -- 75mm) X nut G 3.5"	1	1		4.038



aquatherm greenpipe® counterpart *with welding socket and male thread for ISO-threaded joints*

Art.-No.	Dimension	Packing unit	Price unit	Price	lb/pc
0127310	(1/2" -- 20mm) X 1" M	10	1		0.328
0127311	(3/4" -- 25mm) X 1" M	10	1		0.330
0127312	(3/4" -- 25 mm) X 1.25" M	10	1		0.489
0127313	(1" -- 32 mm) X 1.25" M	5	1		0.498
0127314	(1" -- 32 mm) X 1.5" M	5	1		0.890
0127315	(1.25" -- 40 mm) X 1.5" M	5	1		0.901
0127316	(1.25" -- 40 mm) X 2" M	5	1		1.331
0127317	(1.5" -- 50 mm) X 2" M	5	1		1.388
0127318	(1.5" -- 50 mm) X 2.25" M	5	1		1.466
0127319	(2" -- 63 mm) X 2.25" M	1	1		1.530
0127320	(2" -- 63 mm) X 2.75" M	1	1		2.361
0127321	(2.5" -- 75 mm) X 2.75" M	1	1		2.414
0127322	(2.5" -- 75 mm) X 3.5" M	1	1		3.179

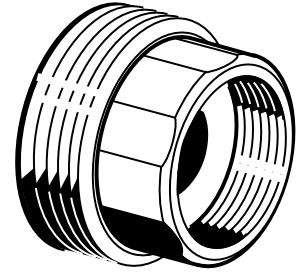


Transition Pieces



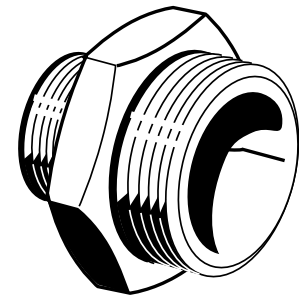
Brass counterpart with female thread, for ISO-threaded joints / threaded connection

Art.-No.	Dimension	Packing unit	Price unit	Price	lb/pc
0127510	1" M X 1/2" F	10	1		0.138
0127512	1.25" M X 3/4" F	10	1		0.264
0127514	1.5" M X 1" F	5	1		0.381
0127516	2" M X 1.25" F	5	1		0.566
0127518	2.25" M X 1.5" F	5	1		0.738
0127520	2.75" M X 2" F	1	1		1.119
0127522	3.5" M X 2.5" F	1	1		1.781
0127524	4" M X 3" F	1	1		2.085



Brass counterpart with male thread, for ISO-threaded joints / threaded connection

Art.-No.	Dimension	Packing unit	Price unit	Price	lb/pc
0127710	1/2" M X 1" M	10	1		0.238
0127712	3/4" M X 1.25" M	10	1		0.418
0127714	1" M X 1.5" M	5	1		0.546
0127716	1.25" M X 2" M	5	1		0.974
0127718	1.5" M X 2.25" M	5	1		1.038
0127720	2" M X 2.75" M	1	1		1.781
0127722	2.5" M X 3.5" M	1	1		2.742
0127724	3" M X 4" M	1	1		3.095

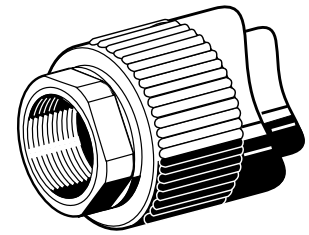


Transition Pieces



aquatherm greenpipe® NPT fusion outlet with hex shaped female thread, weld-in surface and weld-in socket for fusion with the inner wall of the pipe

Brass Art.-No. (NPT)	Stainless Steel Art.-No. (ISO)	Dimension	Packing unit	Price unit	lb/pc
0128214	928214	1.25" / 3/4" -- 40 / 25 mm -1/2" F	5	1	0.192
0128216	928216	1.5" / 3/4" -- 50 / 25 mm -1/2" F	5	1	0.194
0128218	928218	2" / 3/4" -- 63 / 25 mm -1/2" F	5	1	0.194
0128220	928220	2.5" / 3/4" -- 75 / 25 mm -1/2" F	5	1	0.194
0128222	928222	3" / 3/4" -- 90 / 25 mm -1/2" F	5	1	0.194
0128224	928224	3.5" / 3/4" -- 110 / 25 mm -1/2" F	5	1	0.194
0128226	928226	4" / 3/4" -- 125 / 25 mm -1/2" F	5	1	0.201
0128230	928230	6" / 3/4" -- 160 / 25 mm -1/2" F	5	1	0.209
0128232	928232	8-10" / 3/4" -- 200-250 / 25 mm -1/2" F	5	1	0.238
0128234	928234	1.25" / 3/4" -- 40 / 25 mm -3/4" F	5	1	0.245
0128236	928236	1.5" / 3/4" -- 50 / 25 mm -3/4" F	5	1	0.243
0128238	928238	2" / 3/4" -- 63 / 25 mm -3/4" F	5	1	0.240
0128240	928240	2.5" / 3/4" -- 75 / 25 mm -3/4" F	5	1	0.243
0128242	928242	3" / 3/4" -- 90 / 25 mm -3/4" F	5	1	0.245
0128244	928244	3.5" / 3/4" -- 110 / 25 mm -3/4" F	5	1	0.247
0128246	928246	4" / 3/4" -- 125 / 25 mm -3/4" F	5	1	0.287
0128250	928250	6" / 3/4" -- 160 / 25 mm -3/4" F	5	1	0.194
0128254	928254	8-10" / 3/4" -- 200-250 / 25 mm -3/4" F	5	1	0.194
	(NPT)				
0128260	1128260	2.5" / 1" -- 75 / 32 mm -1" F	5	1	0.522
0128262	1128262	3" / 1" -- 90 / 32 mm -1" F	5	1	0.522
0128264	1128264	3.5" / 1" -- 110 / 32 mm -1" F	5	1	0.538
0128266	1128266	4" / 1" -- 125 / 32 mm -1" F	5	1	0.201
0128270	1128270	6" / 1" -- 160 / 32 mm -1" F	5	1	0.245
0128274	1128274	8-10" / 1" -- 200-250 / 32 mm -1" F	5	1	0.538

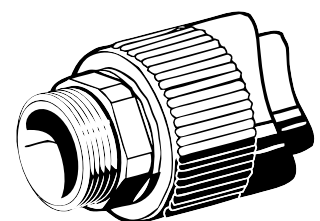


The necessary tools for the fusion of **aquatherm greenpipe®** fusion outlets are listed on page 6.40

Welding tools for fusion outlets Art. No. 0050614 - 0050640

aquatherm greenpipe® NPT fusion outlet with hex shaped male thread, weld-in surface and weld-in socket for fusion with the inner wall of the pipe

Brass Art.-No.	Dimension	Packing unit	Price unit	Price	lb/pc
0128314	1.25" / 3/4" -- 40 / 25 mm -1/2" M	5	1		0.192
0128316	1.5" / 3/4" -- 50 / 25 mm -1/2" M	5	1		0.198
0128318	2" / 3/4" -- 63 / 25 mm -1/2" M	5	1		0.194
0128320	2.5" / 3/4" -- 75 / 25 mm -1/2" M	5	1		0.212
0128322	3" / 3/4" -- 90 / 25 mm -1/2" M	5	1		0.196
0128324	3.5" / 3/4" -- 110 / 25 mm -1/2" M	5	1		0.196
0128326	4" / 3/4" -- 125 / 25 mm -1/2" M	5	1		0.201
0128330	6" / 3/4" -- 160 / 25 mm -1/2" M	5	1		0.201
0128334	1.25" / 3/4" -- 40 / 25 mm -3/4" M	5	1		0.236
0128336	1.5" / 3/4" -- 50 / 25 mm -3/4" M	5	1		0.240
0128338	2" / 3/4" -- 63 / 25 mm -3/4" M	5	1		0.238
0128340	2.5" / 3/4" -- 75 / 25 mm -3/4" M	5	1		0.238
0128342	3" / 3/4" -- 90 / 25 mm -3/4" M	5	1		0.243
0128344	3.5" / 3/4" -- 110 / 25 mm -3/4" M	5	1		0.240
0128346	4" / 3/4" -- 125 / 25 mm -3/4" M	5	1		0.245
0128350	6" / 3/4" -- 160 / 25 mm -3/4" M	5	1		0.245



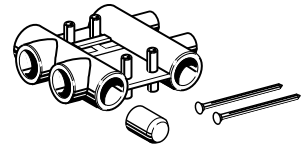
Distributors



aquatherm greenpipe® distribution block plumbing including 1 plug and 2 fastenings

Art.-No.	Dimension	Packing unit	Price unit	Price	lb/pc
0130115	3/4" X 1/2" -- 25 X 20mm	1	1		0.608

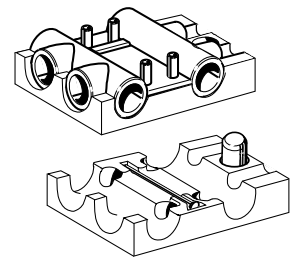
Material: **fuviolen® PP-R (80)**
 passage: 25 mm (socket) / 2 branches: 20 mm (sockets)



aquatherm greenpipe® distribution block plumbing with insulation block (3" X 3" -- 70 X 70mm)

Art.-No.	Dimension	Packing unit	Price unit	Price	lb/pc
0130130	3/4" X 1/2" -- 25 X 20mm	1	1		0.696

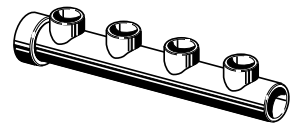
Material: **fuviolen® PP-R (80) / PPO/PS**
 passage: 25 mm (socket) / 2 branches: 20 mm (sockets)



aquatherm greenpipe® distribution pipe Length: 246 mm, with four branch connections

Art.-No.	Dimension	Packing unit	Price unit	Price	lb/pc
0130602	1" X 3/8" -- 32 X 16mm	1	1		0.310
0130604	1" X 1/2" -- 32 X 20mm	1	1		0.295

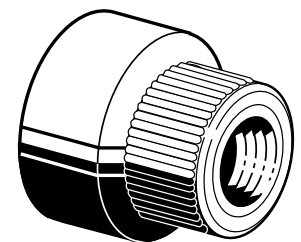
The distribution pipe can be shortened or supplemented by fusion with further distribution pipes as needed.



aquatherm greenpipe® distributor end piece with female thread NPT

Art.-No.	Dimension	Packing unit	Price unit	Price	lb/pc
0130804	(1" -- 32 mm) X 1/2" F	1	1		0.182

to empty or aerate the distribution pipe

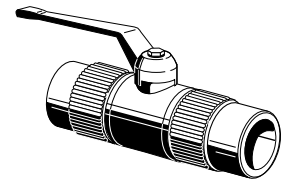


Valves



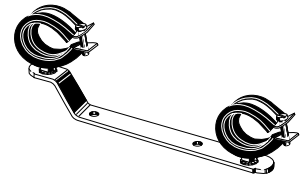
aquatherm greenpipe® ball valve (male/female)

Art.-No.	Dimension	Packing unit	Price unit	Price	lb/pc
0078000	(1" -- 32 mm) M/F	1	1		2.574



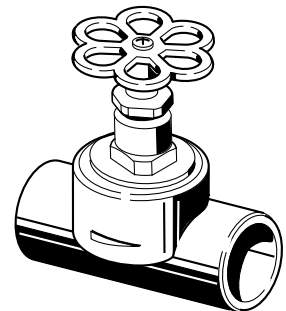
Supporting strap for aquatherm distribution pipe *galvanized, twin*

Art.-No.	Dimension	Packing unit	Price unit	Price	lb/pc
0060210	1" -- 32mm	2	1		0.489



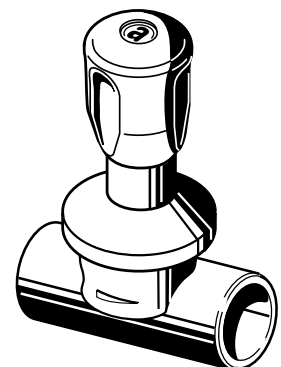
aquatherm greenpipe® screw-down stop globe valve *for surface installation*

Art.-No.	Dimension	Packing unit	Price unit	Price	lb/pc
0140808	1/2" -- 20 mm	1	1		0.452
0140810	3/4" -- 25 mm	1	1		0.465
0140812	1" -- 32 mm	1	1		0.774
0140814	1.25" -- 40 mm	1	1		1.257



aquatherm greenpipe® concealed valve *chromium-plated*

Art.-No.	Dimension	Packing unit	Price unit	Price	lb/pc
0140858	1/2" -- 20 mm	1	1		0.712
0140860	3/4" -- 25 mm	1	1		0.732
0140862	1" -- 32 mm	1	1		0.915



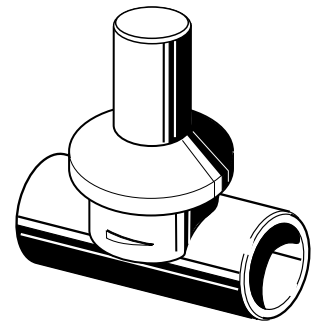
Valves



aquatherm greenpipe® concealed valve chromium-plated, tamper proof, short design

Art.-No.	Dimension	Packing unit	Price unit	Price	lb/pc
0140868	1/2" -- 20 mm	1	1		0.648
0140870	3/4" -- 25 mm	1	1		0.758
0140872	1" -- 32 mm	1	1		0.947

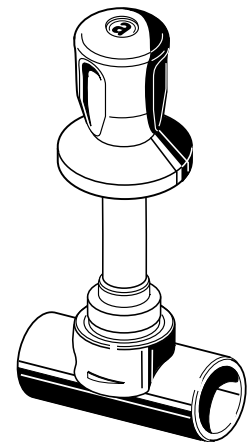
Art.-No. 0140868 - 0140870 suitable for construction depths up to 1"
 Art.-No. 0140872 suitable for construction depths up to 1 1/8"



aquatherm greenpipe® concealed valve chromium-plated

Art.-No.	Dimension	Packing unit	Price unit	Price	lb/pc
0140878	1/2" -- 20 mm	1	1		0.787
0140880	3/4" -- 25 mm	1	1		0.816
0140882	1" -- 32 mm	1	1		0.972

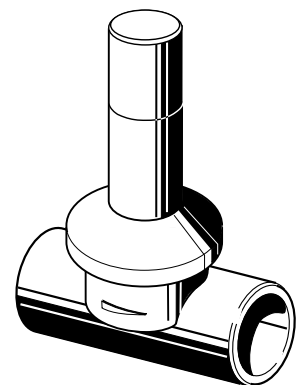
suitable for construction depths from 2 1/8" - 4"



aquatherm greenpipe® concealed valve chromium-plated, tamper proof

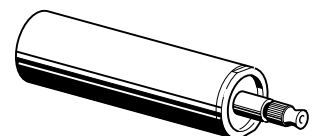
Art.-No.	Dimension	Packing unit	Price unit	Price	lb/pc
0140888	1/2" -- 20 mm	1	1		0.728
0140890	3/4" -- 25 mm	1	1		0.752
0140892	1" -- 32 mm	1	1		0.935

suitable for construction depths up to 2 1/3"



Extension for aquatherm greenpipe® concealed valve chromium-plated for Art.-No. 0040858 - 0040862

Art.-No.	Dimension	Packing unit	Price unit	Price	lb/pc
0040900	Length = 3.2" -- 92 mm	1	1		0.302
0040902	Length = 4.25" -- 132 mm	1	1		0.447

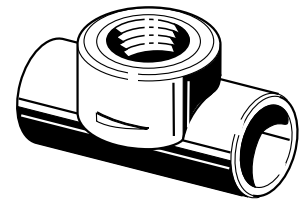


Valves



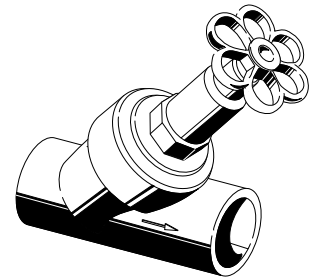
aquatherm-greenpipe® stop valve body

Art.-No.	Dimension	Packing unit	Price unit	Price	lb/pc
0040908	(1/2" -- 20 mm) X 3/4"	1	1		0.234
0040910	(3/4" -- 25 mm) X 3/4"	1	1		0.216
0040912	(1" -- 32 mm) X 1"	1	1		0.317
0040914	(1.25" -- 40 mm) X 1.25"	1	1		0.681



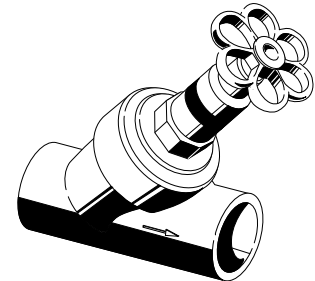
aquatherm greenpipe® inclined valve *without drain*

Art.-No.	Dimension	Packing unit	Price unit	Price	lb/pc
0041108	1/2" -- 20 mm	1	1		0.648
0041110	3/4" -- 25 mm	1	1		0.622
0041112	1" -- 32 mm	1	1		0.933
0041114	1.25" -- 40 mm	1	1		1.836



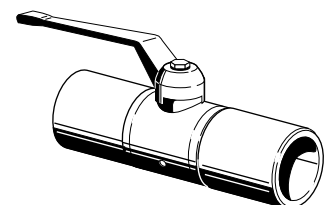
aquatherm greenpipe® combination valve, check valve *without drain*

Art.-No.	Dimension	Packing unit	Price unit	Price	lb/pc
0041208	1/2" -- 20 mm	1	1		0.657
0041210	3/4" -- 25 mm	1	1		0.631
0041212	1" -- 32 mm	1	1		0.957
0041214	1.25" -- 40 mm	1	1		1.856



aquatherm greenpipe® ball valve *without drain*

Art.-No.	Dimension	Packing unit	Price unit	Price	lb/pc
0041308	1/2" -- 20 mm	1	1		0.617
0041310	3/4" -- 25 mm	1	1		0.818
0041312	1" -- 32 mm	1	1		1.307
0041314	1.25" -- 40 mm	1	1		2.094
0041316	1.5" -- 50 mm	1	1		3.494
0041318	2" -- 63 mm	1	1		5.626

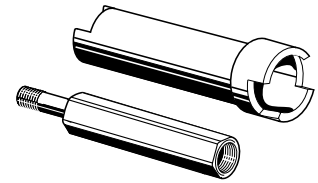


Valves



Extension for **aquatherm greenpipe®** ball valve

Art.-No.	Dimension	Packing unit	Price unit	Price	lb/pc
0041378	(1/2" - 3/4") -- (20 - 25mm) X 35mm	1	1		0.265
0041382	(1" - 1.25") -- (32 - 40mm) X 35 mm	1	1		0.265
0041386	(1.5" - 2") -- (50 - 63mm) X 46 mm	1	1		0.602



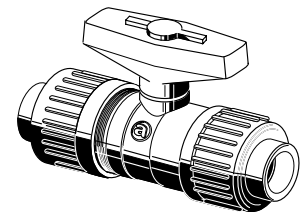
Art. 0041378 suitable for Art. No. 0041308 / 0041310

Art. 0041382 suitable for Art. No. 0041312 / 0041314

Art. 0041386 suitable for Art. No. 0041316 / 0041318

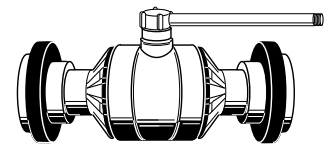
aquatherm greenpipe® ball valve *polypropylene*

Art.-No.	Dimension	Packing unit	Price unit	Price	lb/pc
0141388	1/2" -- 20 mm	1	1		0.287
0141390	3/4" -- 25 mm	1	1		0.441
0141392	1" -- 32 mm	1	1		0.639
0141394	1.25" -- 40 mm	1	1		1.036
0141396	1.5" -- 50 mm	1	1		1.631
0141398	2" -- 63 mm	1	1		2.579
0141400	2.5" -- 75 mm	1	1		13.448



aquatherm greenpipe® ball valve *polypropylene (European flange ring)*

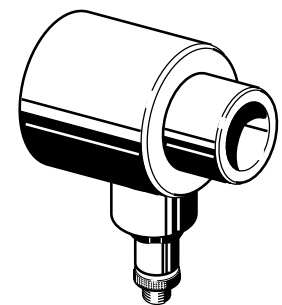
Art.-No.	Dimension	Packing unit	Price unit	Price	lb/pc
0141402	3" -- 90 mm	1	1		20.503
0141404	3.5" -- 110 mm	1	1		24.912
0141406	4" -- 125 mm	1	1		29.762
0041407	6" -- 160 mm	1	1		60.847



Execution with double flange units. Reference to **aquatherm greenpipe®** flange adapter (Art. No. 0115520-0115531), as well as PP-R flange (Art. No. 0115720-0115730)

aquatherm greenpipe® draining branch *to weld in aquatherm greenpipe® valves*

Art.-No.	Dimension	Packing unit	Price unit	Price	lb/pc
0041408	1/2" -- 20 mm	1	1		0.216
0041410	3/4" -- 25 mm	1	1		0.207
0041412	1" -- 32 mm	1	1		0.254
0041414	1.25" -- 40 mm	1	1		0.306
0041416	1.5" -- 50 mm	1	1		0.443
0041418	2" -- 63 mm	1	1		0.635

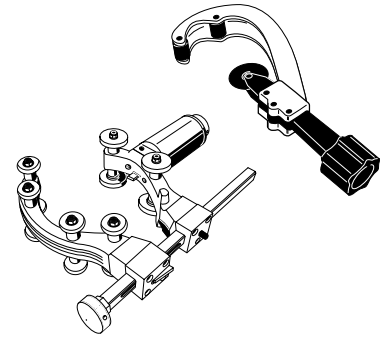


Tools



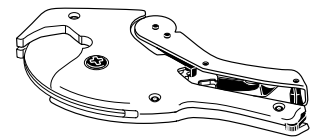
aquatherm pipe cutter

Art.-No.	Dimension	Packing unit	Price unit	Price	lb/pc
0050102	(3/8" - 1.25") -- (16 - 40 mm)	1	1		0.937
0050105	(1.5" - 4") -- (50 - 125 mm)	1	1		3.126
0050106	(6") -- (160 mm)	1	1		-



aquatherm pipe cutter

Art.-No.	Dimension	Packing unit	Price unit	Price	lb/pc
0050104	(3/8" - 1.25") -- (16 - 40 mm)	1	1		1.307



Note: Intended for use with PP-R pipe and fittings only.

aquatherm orbital circular saw

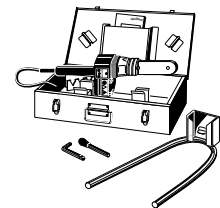
Art.-No.	Dimension	Packing unit	Price unit	Price	lb/pc
0050108	for pipes 6" - 14" (160 - 355mm)	1	1		1.307

This orbital circular saw can be ordered directly from Rothenberger with Art.-No. 5.5620 (www.rothenberger.com). High-performance orbital circular saw for fast, precise, perfectly aligned and right-angled cutting of plastic pipes 160 - 355 mm at the building site or in the workshop.

aquatherm heating iron 110 V

Art.-No.	Dimension	Packing unit	Price unit	Price	lb/pc
0452336	(3/8" - 1") -- (16 - 32mm)	1	1		13.007

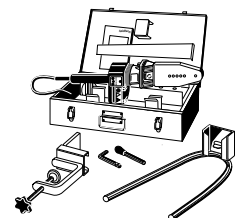
with base and case for storage of welding tools



aquatherm heating iron 110 V

Art.-No.	Dimension	Packing unit	Price unit	Price	lb/pc
0452337	(3/8" - 2") -- (16 - 63 mm)	1	1		17.196

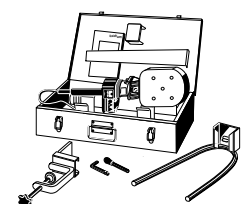
with base and case for storage of welding tools



aquatherm heating iron 110 V

Art.-No.	Dimension	Packing unit	Price unit	Price	lb/pc
0452341	(1.5" - 4") -- (50 - 125 mm)	1	1		20.503

with base and case for storage of welding tools



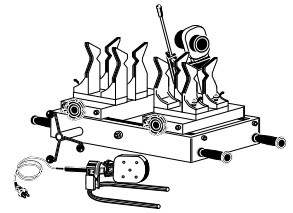
Tools



aquatherm bench welding machine 110 V

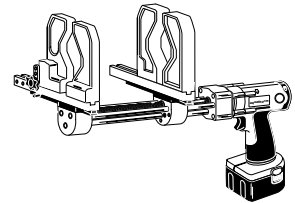
Art.-No.	Dimension	Packing unit	Price unit	Price	lb/pc
0450147	(1.5" - 4") -- (50 - 125 mm)	1	1		185.18

including welding tools 50 - 125 mm (Art. 0050216 - 0050226)
manual welding device (1400 W) (Art. 0452341) and wooden case for transport



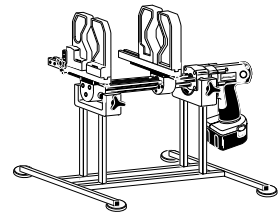
aquatherm electric welding jig

Art.-No.	Dimension	Packing unit	Price unit	Price	lb/pc
0450149	(2" - 4") -- (63 - 125 mm)	1	1		41.888



aquatherm stand for electric welding jig (pictured with jig, sold separately)

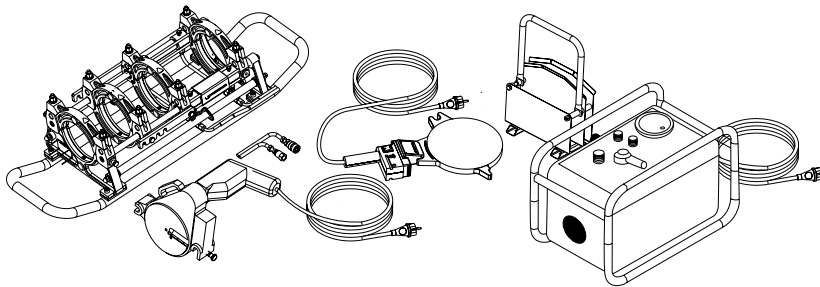
Art.-No.	Dimension	Packing unit	Price unit	Price	lb/pc
0050151	-	1	1		6.042



aquatherm butt welding machine with milling cutter and heating plate

Art.-No.	Dimension	Packing unit	Price unit	Price	lb/pc
0450163	(6" - 10") -- (160 - 250 mm)	1	1		222.66

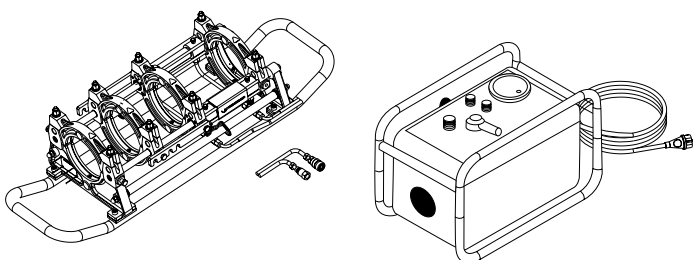
including wooden transport case



aquatherm butt welding machine without milling cutter and heating plate

Art.-No.	Dimension	Packing unit	Price unit	Price	lb/pc
0450164	(6" - 10") -- (160 - 250 mm)	1	1		-

including wooden transport case



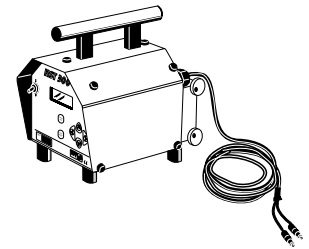
Tools



aquatherm electrofusion device

Art.-No.	Dimension	Packing unit	Price unit	Price	lb/pc
0450175	(3/8" - 6") -- (20 - 160 mm)	1	1		45.194

for **aquatherm greenpipe®** electrofusion sockets Art.-No. 0117208-0117230



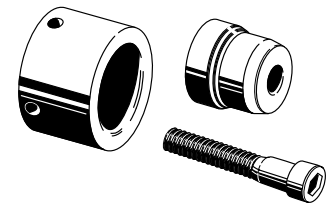
aquatherm cleaning wipes e.g. for electrofusion sockets

Art.-No.	Dimension	Packing unit	Price unit	Price	lb/pc
0050193	box of 100 wipes	1	1		0.765



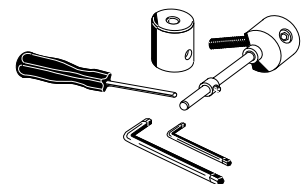
aquatherm welding heads

Art.-No.	Dimension	Packing unit	Price unit	Price	lb/pc
0050206	3/8" -- 16 mm	1	1		0.243
0050208	1/2" -- 20 mm	1	1		0.249
0050210	3/4" -- 25 mm	1	1		0.313
0050212	1" -- 32 mm	1	1		0.461
0050214	1.25" -- 40 mm	1	1		0.679
0050216	1.5" -- 50 mm	1	1		1.001
0050218	2" -- 63 mm	1	1		1.499
0050220	2.5" -- 75 mm	1	1		2.019
0050222	3" -- 90 mm	1	1		3.122
0050224	3.5" -- 110 mm	1	1		5.401
0050226	4" -- 125 mm	1	1		7.328



aquatherm repair set to close pipe holes up to 10mm (repair stick Art.-No. 0060600)

Art.-No.	Dimension	Packing unit	Price unit	Price	lb/pc
0050307	1/4" -- 7 mm	1	1		0.368
0050311	7/16" -- 11 mm	1	1		0.365



Tools

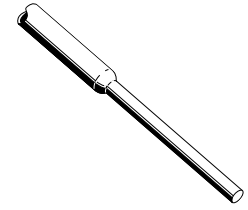


aquatherm greenpipe® repair plug

Art.-No.	Dimension O.D. for Each End	Packing unit	Price unit	Price	lb/pc
0060600	7/16" X 1/4" -- 11 X 7 mm	10	1		0.018

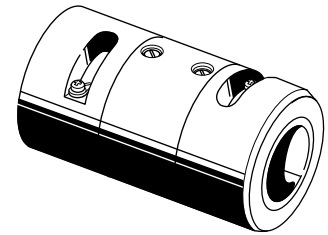
Material: **fuviolen® PP-R (80)** to close pipe holes up to 10 mm.

Tool: **aquatherm** repair set (Art.-No. 0050307 & 0050311).



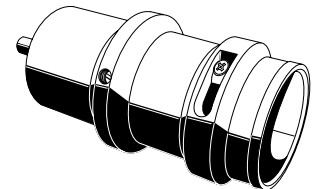
aquatherm peeling tool for UV piping systems

Art.-No.	Dimension	Packing unit	Price unit	Price	lb/pc
0050506	3/8" & 1/2" -- 16 mm & 20 mm	1	1		0.957
0050508	1/2" & 3/4" -- 20 mm & 25 mm	1	1		0.880
0050512	1" & 1.25" -- 32 mm & 40 mm	1	1		1.473
0050514	1.25" & 1.5" -- 40 mm & 50 mm	1	1		2.233
0050518	2" & 2.5" -- 63 mm & 75 mm	1	1		3.318
0050524	3" & 3.5" -- 90 mm & 110 mm	1	1		2.277



aquatherm peeling tool for UV piping systems

Art.-No.	Dimension	Packing unit	Price unit	Price	lb/pc
0050558	1/2" -- 20 mm	1	1		-
0050560	3/4" -- 25 mm	1	1		-
0050562	1" -- 32 mm	1	1		-
0050564	1.25" -- 40 mm	1	1		-
0050566	1.5" -- 50 mm	1	1		-
0050568	2" -- 63 mm	1	1		-
0050570	2.5" -- 75 mm	1	1		-
0050572	3" -- 90 mm	1	1		-
0050574	3.5" -- 110 mm	1	1		-
0050576	4" -- 125 mm	1	1		-
0050580	6" -- 160 mm	1	1		-



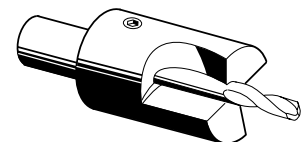
Art.-No. 0050558-005070
as insert for drilling
machine

Spare blade for aquatherm peeling tools (Art.-No. 0050506-0050524, 0050558-0050570)

Art.-No.	Dimension	Packing unit	Price unit	Price	lb/pc
0050440	-	1	1		0.004

aquatherm drill bit for the mounting of weld in fusion outlets

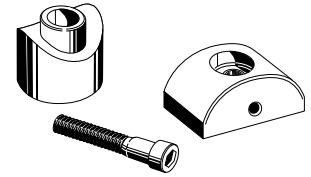
Art.-No.	Dimension	Packing unit	Price unit	Price	lb/pc
0050940	1/2" & 3/4" -- 20 & 25 mm for pipes 1.25" - 6" -- 40 - 160 mm	1	1		0.302
0050941	1/2" & 3/4" -- 20 & 25 mm for pipes 2" - 10" -- 63 - 160 mm	1	1		-
0050942	1" -- 32 mm	1	1		0.459
0050944	1.25" -- 40 mm	1	1		0.619
0050946	1.5" -- 50 mm	1	1		-
0050948	2" -- 63 mm	1	1		0.710



Tools



aquatherm fusion outlet welding heads for fusion outlet welding of Art.-No. 0115156 - 0115257 and 0128214 - 0128274



Art.-No.	Dimension	Packing unit	Price unit	Price	lb/pc
0050614	1.25" X 1/2" & 3/4" -- 40 X 20 & 25 mm	1	1		0.408
0050616	1.5" X 1/2" & 3/4" -- 50 X 20 & 25 mm	1	1		0.492
0050619	2" X 1/2" & 3/4" -- 63 X 20 & 25 mm	1	1		0.540
0050620	2" X 1" -- 63 X 32 mm	1	1		0.498
0050623	2.5" X 1/2" & 3/4" -- 75 X 20 & 25 mm	1	1		0.560
0050624	2.5" X 1" -- 75 X 32 mm	1	1		0.564
0050625	2.5" X 1.25" -- 75 X 40 mm	1	1		0.990
0050627	3" X 1/2" & 3/4" -- 90 X 20 & 25 mm	1	1		0.589
0050628	3" X 1" -- 90 X 32 mm	1	1		0.604
0050629	3" X 1.25" -- 90 X 40 mm	1	1		1.023
0050631	3.5" X 1/2" & 3/4" -- 110 X 20 & 25 mm	1	1		0.613
0050632	3.5" X 1" -- 110 X 32 mm	1	1		0.631
0050634	3.5" X 1.25" -- 110 X 40 mm	1	1		1.060
0050635	3.5" X 1.5" -- 110 X 50 mm	1	1		1.717
0050636	4" X 1/2" & 3/4" -- 125 X 20 & 25 mm	1	1		0.644
0050638	4" X 1" -- 125 X 32 mm	1	1		0.661
0050640	4" X 1.25" -- 125 X 40 mm	1	1		1.120
0050642	4" X 1.5" -- 125 X 50 mm	1	1		1.746
0050644	4" X 2" -- 125 X 63 mm	1	1		2.687
0050648	6" X 1/2" & 3/4" -- 160 X 20 & 25 mm	1	1		0.710
0050650	6" X 1" -- 160 X 32 mm	1	1		0.741
0050652	6" X 1.25" -- 160 X 40 mm	1	1		1.199
0050654	6" X 1.5" -- 160 X 50 mm	1	1		1.854
0050656	6" X 2" -- 160 X 63 mm	1	1		2.818
0050660	8" X 1/2" & 3/4" -- 200 X 20 & 25 mm	1	1		-
0050662	8" X 1" -- 200 X 32 mm	1	1		-
0050664	8" X 1.25" -- 200 X 40 mm	1	1		-
0050666	8" X 1.5" -- 200 X 50 mm	1	1		-
0050668	8" X 2" -- 200 X 63 mm	1	1		-
0050672	10" X 1/2" & 3/4" -- 250 X 20 & 25 mm	1	1		-
0050674	10" X 1" -- 250 X 32 mm	1	1		-
0050676	10" X 1.25" -- 250 X 40 mm	1	1		-
0050678	10" X 1.5" -- 250 X 50 mm	1	1		-
0050680	10" X 2" -- 250 X 63 mm	1	1		-

For more information, please visit us on the web.

www.aquathermpipe.com