



VOLUME VII



A World and Main company

**SECTION F - CAST IRON**

Closet Flanges and Accessories ..... 239-240

Residential Shower/Floor Drains ..... 241-243

Assembled Cast Iron Drains ..... 244-248

Drain Bodies..... 249-250

Spuds and Strainers ..... 250-251

General Purpose Drains..... 252-253

Assembled Cleanouts..... 254-257

Cleanout Bodies and Spuds..... 258-259

Cleanout Plugs ..... 260-261

Cleanout Cover Plates..... 262

Bell Traps..... 263

Floor and Cesspool Drains/Grates ..... 264

Service Sinks and Accessories ..... 265

Roof Drains..... 266

Bar Grates/Sewer Strainers and Boxes ..... 267

Vent Boxes/Caps/Backwater Valves ..... 268

Test Tees and Closet Bends ..... 269

Gas Burners/Log Lighter Valves/Accessories ..... 270-271

**F**

### Cast Iron Two Finger Flange



- Patent #: 5,937,450
- Flush fit
- Redesigned to fit oblong horns
- Made of cast iron
- Pushes easily into cast iron or Schedule 40 DWV pipe
- No tear out or caulking required
- ASTM C-564 rubber gasket
- 3" x 2", 4" x 2" and 4" x 3": for areas with the bend close to the flange
- 3" x 4", 4" x 4" and 4" x 6": for areas without the bend close to the flange or broken pipe



PART NO.	DESCRIPTION	CTN QTY
C47320	3" x 2" CI two finger flange	8
C47340	3" x 4" CI two finger flange	4
C47420	4" x 2" CI two finger flange	8
C47430	4" x 3" CI two finger flange	4
C47440	4" x 4" CI two finger flange	4
C47460	4" x 6" CI two finger flange	2

### Inside Caulk Closet Flange



- Notched and slotted
- Inside caulk connection



**Service Weight**

PART NO.	DESCRIPTION	CTN QTY
C41410	4" x 1" inside caulk	10
C41411	4" x 1-1/2" inside caulk	10
C41420	4" x 2" inside caulk	8
C41421	4" x 2-1/2" inside caulk	8
C41430	4" x 3" inside caulk	6
C41440	4" x 4" inside caulk	4
C41460	4" x 6" inside caulk	2
<b>Extra Heavy - 5" I.D. - NO BEAD</b>		
C42421	4" x 2-1/2" inside caulk	8
C42440	4" x 4" inside caulk	4
C42460	4" x 6" inside caulk	2

### Inside Caulk Reducing Closet Flange



- Notched and slotted
- Inside caulk connection



PART NO.	DESCRIPTION	CTN QTY
C45433	4" inlet x 3" outlet x 3" depth	6

### No Caulk Closet Flange with Test Cap



- Slotted
- Stainless bolts and washers

PART NO.	DESCRIPTION	CTN QTY
C40425	4" x 2" no caulk	8

### Code Blue No Caulk Closet Flange



- Four stainless bolts and washers
- Neoprene gasket meets ASTM C564
- Ideal for both repair and new construction
- Easy to install- reduces installation time by 80%
- Push over cast iron or plastic pipe, anchor to floor and tighten bolts
- C40420, C40430, and C40440 are UPC listed

Parts marked \* are



PART NO.	DESCRIPTION	CTN QTY
C40320	3" pipe x 2" depth	8
C40420*	4" pipe x 2" depth	8
C40430*	4" pipe x 3" depth	4
C40440*	4" pipe x 4" depth	4

### Code Blue No Caulk Closet Flange with Test Cap



- Cut out neoprene test cap
- Stainless steel bolts



PART NO.	DESCRIPTION	CTN QTY
C40500	4" x 2" no caulk	8
C40503	3" x 3" no caulk	8

### No Hub Closet Flange



- Notched and slotted
- C46331 and C46351 are UPC listed

Parts marked \* are



PART NO.	DESCRIPTION	CTN QTY
C46331*	3" x 3-1/2" no hub	6
C46431	4" x 3-1/2" no hub	6
C46351*	3" x 5-1/2" no hub	6
C46451	4" x 5-1/2" no hub	6

Items marked with the Jones Stephens logo are "You Need It... We Got It" Items.

## 2" Offset Closet Flange



PART NO.	DESCRIPTION	CTN QTY
C43440	4" x 4" x 2" inside caulk	4
C43441	4" x 4" x 2" no hub	4

## Code Blue 1" Offset Closet Flange



• 5/16" bolt slots

F

PART NO.	DESCRIPTION	CTN QTY
C40640	4" no caulk	4

## Four Way Offset Closet Flange



• 1-1/2" offset  
• Internal clip allows 360° offset capability

PART NO.	DESCRIPTION	CTN QTY
C44420	4 "x 2" inside caulk	8
C44440	4" x 4" inside caulk	4

## Brass Closet Flange



PART NO.	DESCRIPTION	CTN/MSTR
C49440	14 oz.	1/50
C49441	Deep seal 1-1/8"	1/40
C49442	16 oz.	1/50

## Brass Four Way Offset Closet Flange



• Clip allows four way 1-1/2" offset  
• For use with lead bends

PART NO.	DESCRIPTION	CTN/MSTR
C49421	4" x 2" 4-way offset closet flange	1/40

## Closet Flange Repair Ring



• Securely attaches to concrete or wood sub-floor  
• Replaces most closet rings  
• Corrosion resistant  
• Mounting ears offset by 1/8" to allow closet bolts to be installed

PART NO.	DESCRIPTION	CTN/MSTR
C85000	Closet flange repair ring	20/80

## Moss Bay Repair Flange



• For corroded and rusted toilet flanges  
• Installs in minutes  
• Galvanized

PART NO.	DESCRIPTION	CTN/MSTR
C85500	Moss bay repair flange	1/50

## Gapper Flange



• Used to repair broken closet flanges  
• Individually carded

PART NO.	DESCRIPTION	CTN/MSTR
C87100	Repair flange (carded)	24/240

## Flange Support for Wood Floors



• Supports flange if floor has rotted or if rough-in hole is too large  
• Easy to install- complete kit includes screws  
• Cast iron fits 3" or 4" flange; plastic fits 3", 4" or 3"x 4" flange  
• Individually carded

PART NO.	DESCRIPTION	CTN/MSTR
C01001	Flange support for plastic (carded)	1/50
C01002	Flange support for cast iron (carded)	1/50

Items marked with the Jones Stephens logo are "You Need It...We Got It" Items.

# Cast Iron Residential Shower/Floor Drains

Pages 241-243

SIZES: 1-1/2", 2"



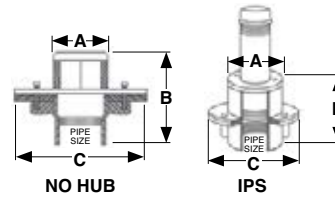
For use in  
residential applications.

## 1-1/2" or 2" Code Blue EZ Test Shower Drain



- Includes cover plate and stainless steel screws
- D64012 and D64302 are UPC approved
- Nipple not included

Parts marked  
\* are



PIPE SIZE	A	B	C
1-1/2"	3-1/2"	4-1/4"	6"
2"	3-1/2"	4-1/4"	7"

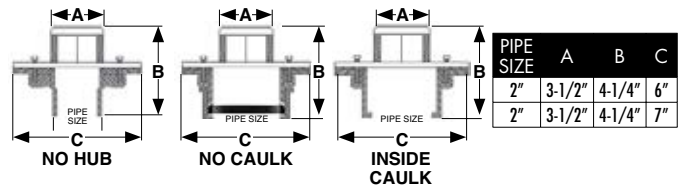
PART NO.	SIZE	BASE	STRAINER	CTN/MSTR
D64150	1-1/2" IPS	6"	SS	1/4
D64202	2" IPS	6"	SS	1/4
D64012*	2" IPS	7"	SS	1/4
D64302*	2" no hub	6"	SS	1/4

## 2" Code Blue Shower Drain



- Includes cover plate and stainless steel screws
- No caulk includes built-in test plug
- D64002 and D64022 are UPC approved

Parts marked  
\* are



PIPE SIZE	A	B	C
2"	3-1/2"	4-1/4"	6"
2"	3-1/2"	4-1/4"	7"

PART NO.	SIZE	BASE	STRAINER	CTN/MSTR
D64502	2" no caulk	6"	SS	1/4
D64002*	2" no caulk	7"	SS	1/4
D64402	2" inside caulk	6"	SS	1/4
D64402G	D64402 + gasket	6"	SS	1/4
D64022*	2" no hub	7"	SS	1/4

Items marked with the Jones Stephens logo are "You Need It... We Got It" Items.

## 2" Code Blue Roman Tub Drain



- 6" and 7" pans
- Non-adjustable

PART NO.	SIZE	BASE	FINISH	CTN QTY
D64800	2" IPS	7"	CP (PVD)	1
D64801	2" no caulk	7"	CP (PVD)	1
D64802	2" IPS	6"	CP (PVD)	1
D64803	2" no caulk	6"	CP (PVD)	1
D64804	2" IPS	7"	PB (PVD)	1
D64805	2" no caulk	7"	PB (PVD)	1
D64806	2" IPS	6"	PB (PVD)	1
D64807	2" no caulk	6"	PB (PVD)	1
D64808	2" IPS	7"	SN (PVD)	1
D64809	2" no caulk	7"	SN (PVD)	1
D64810	2" IPS	6"	SN (PVD)	1
D64811	2" no caulk	6"	SN (PVD)	1

## F Code Blue Replacement Strainer



- Roman tub drains
- Fits non-adjustable Code Blue drains

PART NO.	DESCRIPTION	CTN/MSTR
D40000	CP strainer	1/50
D40001	PB (PVD) strainer	1/50
D40002	SN (PVD) strainer	1/50



- Regular strainer
- Fits non-adjustable Code Blue drains
- Will not fit D64010 or D64011
- Includes screws

PART NO.	DESCRIPTION	CTN/MSTR
D64000	2" SS	1/50
D64401	2" SS crown	1/400
D64001	2" PB (PVD)	1/100
D6400BN	2" Brushed Nickel	1/250
D6400RB	2" Oil Rubbed Bronze	1/250
D6400WB	2" Old World Bronze	1/250

## 2" Code Blue Non-Adjustable Drain



- With ABS base and cast iron top

PART NO.	TOP	BASE	CTN/MSTR
D64010	Cast Iron	ABS base	1/8
D64011 (with test cap)	Cast Iron	ABS base	1/8

Ⓢ Items marked with the Jones Stephens logo are "You Need It... We Got It" Items.

## 2" Shower/Floor Drain



- Brass spud
- 6-1/2" pan
- Tongue and groove cast iron bolt down clamping ring
- Weep holes on both top and bottom for secondary drainage
- Inside caulk unit can be used with gasket to make unit no-caulk

PART NO.	SIZE	STRAINER	CTN QTY
D60100	2" inside caulk	4" SS round	8
D60102	2" FIP	4" SS round	8
D60103	2" no hub	4" SS round	8
D60201	2" inside caulk	4" CP cast round	8
D60202	2" inside caulk	4" PB cast round	8
D60203	2" FIP	4" CP cast round	8
D60204	2" FIP	4" PB cast round	8
D60205 Ⓢ	2" no hub	4" CP cast round	8
D60206	2" no hub	4" PB cast round	8
D60211	2" inside caulk	6" CP cast round	1
D60212	2" inside caulk	6" PB cast round	1
D60207	2" FIP	6" CP cast round	1
D60208	2" FIP	6" PB cast round	1
D60209	2" no hub	6" CP cast round	1
D60210	2" no hub	6" PB cast round	1
D60400	2" inside caulk	4" CP cast square	1
D60410	2" inside caulk	4" PB cast square	1
D60402	2" FIP	4" CP cast square	1
D60412	2" FIP	4" PB cast square	1
D60403	2" no hub	4" CP cast square	1
D60413	2" no hub	4" PB cast square	1
D60499	2" inside caulk push on	4" CP cast square	1
D60498	2" inside caulk push on	4" PB cast square	1
D60101	2" gasket for inside caulk unit		1

## 2" Shower Drain with Brass Threaded Clamping Ring



- Brass spud
- 6-1/2" pan
- Designed for lead pan showers
- Weep holes in clamping ring

PART NO.	SIZE	STRAINER	CTN QTY
D61101	2" IPS	4" SS round	4
D61102	2" no hub	4" SS round	4
D61103	2" inside caulk	4" SS round	4
D61201	2" IPS	4" CP cast brass round	4
D61202	2" no hub	4" CP cast brass round	4
D61203	2" inside caulk	4" CP cast brass round	4
D61301	2" IPS	6" PB cast brass round	4
D61302	2" no hub	6" PB cast brass round	4
D61303	2" inside caulk	6" PB cast brass round	4
D61850	Brass screw-down clamping ring		1

## 2" Shower Drain Base with Clamping Ring and Bolts



- 6-1/2" pan; 2-1/2" height
- Tongue and groove cast iron bolt down clamping ring
- Weep holes on both top and bottom for secondary drainage
- Inside caulk unit can be used with gasket to make unit no caulk
- For 2" IPS threaded tailpieces

PART NO.	SIZE	HEIGHT	CTN QTY
D60900	2" inside caulk	2-1/2"	1
D60901	2" FIP	2-1/2"	1
D60902	2" no hub	2-1/2"	1

## 2" Shower Drain Base with Brass Threaded Clamping Ring



- 6-3/8" pan; 3-1/4" height
- Designed for lead pan showers
- Weep holes in clamping ring
- For 2" IPS threaded tailpieces

PART NO.	SIZE	CTN QTY
D61800	2" FIP	1
D61801	2" no hub	1
D61802	2" inside caulk	1

F

# Cast Iron Commercial Drains

Pages 244-248

F

**SIZES: 2", 3", 4"**



For use in  
commercial applications.

## 2" Code Blue No Caulk (Mechanical Joint) Floor Drain



- 1/2" Primer tapped with brass plug
- Supplied with stainless steel bolts
- UPC listed

PART NO.	PAN	STRAINER	HEIGHT	CTN QTY
D65661	7"	4" NB round	4" - 4-13/16"	1
D65662	7"	4" PB round	4" - 4-13/16"	1
D66681	9"	4" NB round	4" - 4-13/16"	1
D66682	9"	4" PB round	4" - 4-13/16"	1
D65500	7"	5" NB round	4" - 5"	1
D65501	7"	5" PB round	4" - 5"	1
D65502	7"	5" CP round	4" - 5"	1
D66500	9"	5" NB round	4" - 5"	1
D66501	9"	5" PB round	4" - 5"	1
D66502	9"	5" CP round	4" - 5"	1
D65503	7"	6" NB round	4-1/4" - 5-1/4"	1
D65504	7"	6" PB round	4-1/4" - 5-1/4"	1
D65505	7"	6" CP round	4-1/4" - 5-1/4"	1
D66503	9"	6" NB round	4-1/4" - 5-1/4"	1
D66504	9"	6" PB round	4-1/4" - 5-1/4"	1
D66505	9"	6" CP round	4-1/4" - 5-1/4"	1
D65509	7"	5" NB square	4-1/4" - 5-1/4"	1
D65511	7"	5" PB square	4-1/4" - 5-1/4"	1
D66509	9"	5" NB square	4-1/4" - 5-1/4"	1
D66511	9"	5" PB square	4-1/4" - 5-1/4"	1
D65510	7"	6" NB square	4-1/4" - 5-1/4"	1
D65512	7"	6" PB square	4-1/4" - 5-1/4"	1
D66510	9"	6" NB square	4-1/4" - 5-1/4"	1
D66512	9"	6" PB square	4-1/4" - 5-1/4"	1

## 2" Code Blue (Mechanical Joint) No Caulk Slab Drain



- No Clamping Ring

PART NO.	PAN	STRAINER	HEIGHT	CTN QTY
D67001	7"	4" NB round	3-3/4" - 4-3/4"	1
D67002	7"	4" PB round	3-3/4" - 4-3/4"	1
D67003	7"	5" NB round	3-3/4" - 4-7/8"	1
D67004	7"	5" PB round	4" - 5-3/8"	1
D67005	7"	5" CP round	3-1/2" - 4-7/8"	1
D67006	7"	6" NB round	3-3/4" - 5-1/8"	1
D67007	7"	6" PB round	3-3/4" - 5-1/8"	1
D67008	7"	6" CP round	4" - 5-1/2"	1



## 2" Code Blue No Hub Floor Drain



- 1/2" Primer tapped with brass plug
- Supplied with stainless steel bolts
- UPC listed

### 3 1/2" IPS Spud with 4", 5" or 6" Round Strainer

PART NO.	PAN	STRAINER	HEIGHT	CTN QTY
D66675	9"	4" NB round	3-3/4" - 4-5/8"	1
D66676	9"	4" PB round	3-3/4" - 4-5/8"	1
D65655	7"	4" NB round	3-3/4" - 4-7/16"	1
D65656	7"	4" PB round	3-3/4" - 4-7/16"	1
D65560	7"	5" NB round	2-7/8" - 4-1/2"	1
D65561	7"	5" PB round	2-7/8" - 4-1/2"	1
D65562	7"	5" CP round	2-7/8" - 4-1/2"	1
D66560	9"	5" NB round	3-1/2" - 5-1/8"	1
D66561	9"	5" PB round	3-1/2" - 5-1/8"	1
D66562	9"	5" CP round	3-1/2" - 5-1/8"	1
D65563	7"	6" NB round	4" - 5-1/4"	1
D65564	7"	6" PB round	4" - 5-1/4"	1
D65565	7"	6" CP round	4" - 5-1/4"	1
D66563	9"	6" NB round	3-5/8" - 5-5/8"	1
D66564	9"	6" PB round	3-5/8" - 5-5/8"	1
D66565	9"	6" CP round	3-5/8" - 5-5/8"	1
D65569	7"	5" NB square	3-1/4" - 5-1/4"	1
D65571	7"	5" PB square	3-1/4" - 5-1/4"	1
D66569	9"	5" NB square	3-7/8" - 5-7/8"	1
D66571	9"	5" PB square	3-7/8" - 5-7/8"	1
D65570	7"	6" NB square	4" - 5-1/4"	1
D65572	7"	6" PB square	4" - 5-1/4"	1
D66570	9"	6" NB square	4-1/8" - 6-3/8"	1
D66572	9"	6" PB square	4-1/8" - 6-3/8"	1

## 2" Code Blue No Hub Slab Drain



- No clamping ring

PART NO.	PAN	STRAINER	HEIGHT	CTN QTY
D67016	7"	4" NB round	3-5/8" - 4-3/4"	1
D67017	7"	4" PB round	3-5/8" - 4-3/4"	1
D67018	7"	5" NB round	3-1/2" - 4-7/8"	1
D67019	7"	5" PB round	4" - 5-3/8"	1
D67020	7"	5" CP round	3-1/2" - 4-7/8"	1
D67021	7"	6" NB round	3-7/8" - 5"	1
D67022	7"	6" PB round	3-3/4" - 5"	1
D67023	7"	6" CP round	4" - 5-3/8"	1
D67027	7"	5" NB square	3-3/4" - 5-1/8"	1
D67028	7"	5" PB square	3-3/4" - 5-1/8"	1
D67029	7"	6" NB square	4" - 5-3/16"	1
D67030	7"	6" PB square	4" - 5-3/16"	1

## 2" Code Blue IPS Floor Drain



- 1/2" Primer tapped with brass plug
- Supplied with stainless steel bolts
- UPC listed

PART NO.	PAN	STRAINER	HEIGHT	CTN QTY
D66687	9"	4" NB round	3-1/4" - 4"	1
D66688	9"	4" PB round	3-1/4" - 4"	1
D65665	7"	4" NB round	3-3/16" - 4-3/16"	1
D65620	7"	5" NB round	2-7/8" - 4-1/2"	1
D65621	7"	5" PB round	2-7/8" - 4-1/2"	1
D65622	7"	5" CP round	2-7/8" - 4-1/2"	1
D66620	9"	5" NB round	3-1/2" - 5-1/8"	1
D66621	9"	5" PB round	3-1/2" - 5-1/8"	1
D66622	9"	5" CP round	3-1/2" - 5-1/8"	1
D65623	7"	6" NB round	3-1/2" - 4-1/2"	1
D65624	7"	6" PB round	3-1/2" - 4-1/2"	1
D65625	7"	6" CP round	3-1/2" - 4-1/2"	1
D66623	9"	6" NB round	3-5/8" - 5-5/8"	1
D66624	9"	6" PB round	3-5/8" - 5-5/8"	1
D66625	9"	6" CP round	3-5/8" - 5-5/8"	1

## 2" Code Blue Push-On Floor Drain



- With clamping ring
- Supplied with V96002 gasket for 2" cast iron pipe

PART NO.	PAN	STRAINER	HEIGHT	CTN QTY
D66700	9"	4" NB round	4-5/8" - 5-1/2"	1
D66701	9"	4" PB round	4-5/8" - 5-1/2"	1
D66702	9"	5" NB round	4-5/8" - 5-1/2"	1
D66703	9"	5" PB round	5-3/16" - 6-1/8"	1
D66704	9"	5" CP round	4-3/4" - 5-1/2"	1
D66705	9"	6" NB round	4-7/8" - 5-3/4"	1
D66706	9"	6" PB round	4-7/8" - 5-3/4"	1
D66707	9"	6" CP round	5-1/4" - 6-1/4"	1

## 2" Bronze Shower Drain



- Heavy bronze body
- Suitable for residential and commercial installation
- 4-1/2" strainers in stainless steel or PVD polished brass
- Solid bronze strainer spuds in standard (1-1/2") or long pattern (2-1/2") length
- 3 types of 2" connections

### 2" IPS Drain

PART NO.	SPUD	STRAINER	CTN QTY
D68510	Standard	4-1/2" SS round	1
D68511	Standard	4-1/2" PB (PVD) round	1
D68512	Long pattern	4-1/2" SS round	1
D68513	Long pattern	4-1/2" PB (PVD) round	1

### 2" Caulk Drain

PART NO.	SPUD	STRAINER	CTN QTY
D68610	Standard	4-1/2" SS round	1
D68611	Standard	4-1/2" PB (PVD) round	1
D68612	Long pattern	4-1/2" SS round	1
D68613	Long pattern	4-1/2" PB (PVD) round	1

### 2" Sweat Drain

PART NO.	SPUD	STRAINER	CTN QTY
D68710	Standard	4-1/2" SS round	1
D68711	Standard	4-1/2" PB (PVD) round	1
D68712	Long pattern	4-1/2" SS round	1
D68713	Long pattern	4-1/2" PB (PVD) round	1

### Replacement Strainers

PART NO.	DESCRIPTION	CTN/MSTR
D68507	4 1/2" SS strainer with screws	100/400
D68508	4 1/2" (PVD) PB strainer with screws	100/400

## 3" Heavy Duty No Hub Floor/Shower Drain



- Cast metal strainer and tailpiece
- Cast iron body

PART NO.	PAN	STRAINER	HEIGHT	CTN QTY
D80200	10"	5" CP round	4-1/2" - 6-1/2"	1
D80201	10"	5" PB round	4-1/2" - 6-1/2"	1
D80212	10"	5" NB round	4-1/2" - 6-1/2"	1
D80202	10"	6" CP round	4-1/2" - 6-1/2"	1
D80203	10"	6" PB round	4-1/2" - 6-1/2"	1
D80213	10"	6" NB round	4-1/2" - 6-1/2"	1
D80214	10"	5" PB square	4-1/2" - 6-1/2"	1
D80216	10"	5" NB square	4-1/2" - 6-1/2"	1
D80215	10"	6" PB square	4-1/2" - 6-1/2"	1
D80217	10"	6" NB square	4-1/2" - 6-1/2"	1

## 3" Heavy Duty Inside Caulk Floor/Shower Drain



- Cast metal strainer and tailpiece
- Cast iron body

PART NO.	PAN	STRAINER	HEIGHT	CTN QTY
D80100	10"	5" CP round	4-1/2" - 6-1/2"	1
D80101	10"	5" PB round	4-1/2" - 6-1/2"	1
D80112	10"	5" NB round	4-1/2" - 6-1/2"	1
D80102	10"	6" CP round	4-3/4" - 6-3/4"	1
D80103	10"	6" PB round	4-3/4" - 6-3/4"	1
D80113	10"	6" NB round	4-3/4" - 6-3/4"	1

## 3" Code Blue No Caulk (Mechanical Joint) Floor Drain



- 1/2" Primer tapped with brass plug
- Supplied with stainless steel bolts
- UPC listed



PART NO.	PAN	STRAINER	HEIGHT	CTN QTY
D66683	9"	4" NB round	4" - 4-3/4"	1
D66684	9"	4" PB round	4" - 4-3/4"	1
D65663	7"	4" NB round	4" - 4-13/16"	1
D65664	7"	4" PB round	4" - 4-13/16"	1
D65520	7"	5" NB round	2-7/8" - 4-1/2"	1
D65521	7"	5" PB round	2-7/8" - 4-1/2"	1
D65522	7"	5" CP round	2-7/8" - 4-1/2"	1
D66520	9"	5" NB round	3-1/2" - 5-1/8"	1
D66521	9"	5" PB round	3-1/2" - 5-1/8"	1
D66522	9"	5" CP round	3-1/2" - 5-1/8"	1
D65523	7"	6" NB round	3" - 5"	1
D65524	7"	6" PB round	3" - 5"	1
D65525	7"	6" CP round	3" - 5"	1
D66523	9"	6" NB round	3-5/8" - 5-5/8"	1
D66524	9"	6" PB round	3-5/8" - 5-5/8"	1
D66525	9"	6" CP round	3-5/8" - 5-5/8"	1

### 3" Code Blue No Hub Slab Drain



- No clamping ring

PART NO.	PAN	STRAINER	HEIGHT	CTN QTY
D67031	7"	4" NB round	3-1/2" - 4-3/4"	1
D67032	7"	4" PB round	3-1/2" - 4-3/4"	1
D67033	7"	5" NB round	3-1/2" - 4-13/16"	1
D67034	7"	5" PB round	4" - 5-5/16"	1
D67035	7"	5" CP round	3-1/2" - 4-13/16"	1
D67036	7"	6" NB round	3-3/4" - 5"	1
D67037	7"	6" PB round	3-3/4" - 5"	1
D67038	7"	6" CP round	4" - 5-3/8"	1
D67039	7"	8" NB round	4-1/8" - 5-5/8"	1
D67040	7"	8" PB round	4-1/8" - 5-5/8"	1
D67041	7"	8" CP round	4-1/4" - 5-5/8"	1
D67042	7"	9" NB round	4-1/4" - 5-5/8"	1
D67043	7"	9" PB round	4-1/4" - 5-5/8"	1
D67044	7"	5" NB square	3-3/4" - 5-1/16"	1
D67045	7"	5" PB square	3-7/8" - 5-1/16"	1
D67046	7"	6" NB square	4" - 5-1/4"	1
D67047	7"	6" PB square	4" - 5-1/4"	1

### 3" Code Blue No Hub Floor Drain



- 1/2" Primer tapped with brass plug
- Supplied with stainless steel bolts
- UPC listed



PART NO.	PAN	STRAINER	HEIGHT	CTN QTY
D65657	7"	4" NB round	3-3/4" - 4-7/16"	1
D65658	7"	4" PB round	3-3/4" - 4-7/16"	1
D66677	9"	4" NB round	3-3/4" - 4-5/8"	1
D66678	9"	4" PB round	3-3/4" - 4-5/8"	1
D65580	7"	5" NB round	2-7/8" - 4-1/2"	1
D65581	7"	5" PB round	2-7/8" - 4-1/2"	1
D65582	7"	5" CP round	2-7/8" - 4-1/2"	1
D66580	9"	5" NB round	3-1/2" - 5-1/8"	1
D66581	9"	5" PB round	3-1/2" - 5-1/8"	1
D66582	9"	5" CP round	3-1/2" - 5-1/8"	1
D65583	7"	6" NB round	3" - 5"	1
D65584	7"	6" PB round	3" - 5"	1
D65585	7"	6" CP round	3" - 5"	1
D66583	9"	6" NB round	3-5/8" - 5-5/8"	1
D66584	9"	6" PB round	3-5/8" - 5-5/8"	1
D66585	9"	6" CP round	3-5/8" - 5-5/8"	1

Items marked with the Jones Stephens logo are "You Need It...We Got It" Items.

### 3" Code Blue IPS Floor Drain



- 1/2" Primer tapped with brass plug
- Supplied with stainless steel bolts
- UPC listed



PART NO.	PAN	STRAINER	HEIGHT	CTN QTY
D66689	9"	4" NB round	3-1/4" x 4"	1
D66690	9"	4" PB round	3-1/4" x 4"	1
D65667	7"	4" NB round	3-3/16" - 4-13/16"	1
D65668	7"	4" PB round	3-3/16" - 4-13/16"	1
D65640	7"	5" NB round	2-7/8" - 4-1/2"	1
D65641	7"	5" PB round	2-7/8" - 4-1/2"	1
D65642	7"	5" CP round	2-7/8" - 4-1/2"	1
D66640	9"	5" NB round	3-1/2" - 5-1/8"	1
D66641	9"	5" PB round	3-1/2" - 5-1/8"	1
D66642	9"	5" CP round	3-1/2" - 5-1/8"	1
D65643	7"	6" NB round	3" - 5"	1
D65644	7"	6" PB round	3" - 5"	1
D65645	7"	6" CP round	3" - 5"	1
D66643	9"	6" NB round	3-5/8" - 5-5/8"	1
D66644	9"	6" PB round	3-5/8" - 5-5/8"	1
D66645	9"	6" CP round	3-5/8" - 5-5/8"	1

### 3" Code Blue Push-On Floor Drain



- With clamping ring
- Supplied with V96003 gasket for 3" cast iron pipe

PART NO.	PAN	STRAINER	HEIGHT	CTN QTY
D66715	9"	4" NB round	4-3/4" - 5-5/8"	1
D66716	9"	4" PB round	4-3/4" - 5-5/8"	1
D66717	9"	5" NB round	4-3/4" - 5-5/8"	1
D66718	9"	5" PB round	5-3/8" - 6-1/4"	1
D66719	9"	5" CP round	4-3/4" - 5-5/8"	1
D66720	9"	6" NB round	5" - 6"	1
D66721	9"	6" PB round	5" - 6"	1
D66722	9"	6" CP round	5-3/8" - 6-3/8"	1

### 4" Heavy Duty No Hub Floor/Shower Drain



- Cast metal strainer and tailpiece
- Cast iron body

PART NO.	PAN	STRAINER	HEIGHT	CTN QTY
D80206	10"	5" CP round	4-1/2" - 6-1/2"	1
D80207	10"	5" PB round	4-1/2" - 6-1/2"	1
D80218	10"	5" NB round	4-1/2" - 6-1/2"	1
D80208	10"	6" CP round	4-3/4" - 6-3/4"	1
D80209	10"	6" PB round	4-3/4" - 6-3/4"	1
D80219	10"	6" NB round	4-3/4" - 6-3/4"	1
D80210	10"	8" CP round	5" - 7"	1
D80211	10"	8" PB round	5" - 7"	1
D80220	10"	5" PB square	4-1/2" - 6-1/2"	1
D80222	10"	5" NB square	4-1/2" - 6-1/2"	1
D80221	10"	6" PB square	4-3/4" - 6-3/4"	1
D80223	10"	6" NB square	4-3/4" - 6-3/4"	1

### 4" Heavy Duty Inside Caulk Floor/Shower Drain



- Cast metal strainer and tailpiece
- Cast iron body

PART NO.	PAN	STRAINER	HEIGHT	CTN QTY
D80106	10"	5" CP round	4-1/2" - 6-1/2"	1
D80107	10"	5" PB round	4-1/2" - 6-1/2"	1
D80118	10"	5" NB round	4-1/2" - 6-1/2"	1
D80108	10"	6" CP round	4-3/4" - 6-3/4"	1
D80109	10"	6" PB round	4-3/4" - 6-3/4"	1
D80119	10"	6" NB round	4-3/4" - 6-3/4"	1

### 4" Code Blue No Caulk (Mechanical Joint) Floor Drain



- 1/2" Primer tapped with brass plug
- Supplied with stainless steel bolts
- UPC listed



PART NO.	PAN	STRAINER	HEIGHT	CTN QTY
D66685	9"	4" NB round	4" - 4-7/8"	1
D66686	9"	4" PB round	4" - 4-7/8"	1
D66540	9"	5" NB round	3-1/2" - 5-1/8"	1
D66541	9"	5" PB round	3-1/2" - 5-1/8"	1
D66542	9"	5" CP round	3-1/2" - 5-1/8"	1
D66543	9"	6" NB round	3-5/8" - 5-5/8"	1
D66544	9"	6" PB round	3-5/8" - 5-5/8"	1
D66545	9"	6" CP round	3-5/8" - 5-5/8"	1

### 4" Code Blue IPS Floor Drain



- 1/2" Primer tapped with brass plug
- Supplied with stainless steel bolts
- UPC listed



PART NO.	PAN	STRAINER	HEIGHT	CTN QTY
D66691	9"	4" NB round	3-1/4" - 4"	1
D66692	9"	4" PB round	3-1/4" - 4"	1
D66660	9"	5" NB round	3-1/2" - 5 1/8"	1
D66661	9"	5" PB round	3-1/2" - 5-1/8"	1
D66662	9"	5" CP round	3-1/2" - 5-1/8"	1
D66663	9"	6" NB round	3-5/8" - 5-5/8"	1
D66664	9"	6" PB round	3-5/8" - 5-5/8"	1
D66665	9"	6" CP round	3-5/8" - 5-5/8"	1

### 4" Code Blue No Hub Floor Drain



- 1/2" Primer tapped with brass plug
- Supplied with stainless steel bolts
- UPC listed



PART NO.	PAN	STRAINER	HEIGHT	CTN QTY
D66679	9"	4" NB round	3-3/8" - 4-5/8"	1
D66680	9"	4" PB round	3-3/8" - 4-5/8"	1
D65659	7"	4" NB round	3-3/4" - 4-7/16"	1
D65660	7"	4" PB round	3-3/4" - 4-7/16"	1
D65600	7"	5" NB round	3-1/2" - 4-3/4"	1
D65601	7"	5" PB round	3-1/2" - 4-3/4"	1
D65602	7"	5" CP round	3-1/2" - 4-3/4"	1
D66600	9"	5" NB round	3-1/2" - 4-3/4"	1
D66601	9"	5" PB round	3-1/2" - 4-3/4"	1
D66602	9"	5" CP round	3-1/2" - 4-3/4"	1
D65603	7"	6" NB round	3-3/4" - 5"	1
D65604	7"	6" PB round	3-3/4" - 5"	1
D65605	7"	6" CP round	3-3/4" - 5"	1
D66603	9"	6" NB round	3-3/4" - 5"	1
D66604	9"	6" PB round	3-3/4" - 5"	1
D66605	9"	6" CP round	3-3/4" - 5"	1

### 4" Code Blue No Hub Slab Drain



- No clamping ring

PART NO.	PAN	STRAINER	HEIGHT	CTN QTY
D67048	7"	4" NB round	3-5/8" - 4-7/8"	1
D67049	7"	4" PB round	3-5/8" - 4-7/8"	1
D67050	7"	5" NB round	3-5/8" - 4-7/8"	1
D67051	7"	5" PB round	4" - 5-3/8"	1
D67052	7"	5" CP round	3-1/2" - 4-7/8"	1
D67053	7"	6" NB round	3-7/8" - 5-1/16"	1
D67054	7"	6" PB round	3-3/4" - 5-1/16"	1
D67055	7"	6" CP round	4" - 5-1/2"	1

### 4" Code Blue Push-On Floor Drain



- With clamping ring
- Supplied with V96004 gasket for 4" cast iron pipe

PART NO.	PAN	STRAINER	HEIGHT	CTN QTY
D66732	9"	4" NB round	4-3/4" - 5-1/2"	1
D66733	9"	4" PB round	4-3/4" - 5-1/2"	1
D66734	9"	5" NB round	4-3/4" - 5-5/8"	1
D66735	9"	5" PB round	5-1/4" - 6-3/16"	1
D66736	9"	5" CP round	4-3/4" - 5-5/8"	1
D66737	9"	6" NB round	5" - 6-1/8"	1
D66738	9"	6" PB round	5" - 6-1/8"	1
D66739	9"	6" CP round	5-3/8" - 6-3/8"	1

# Cast Iron Commercial Drain Components

Pages 249-251

**SIZES: 2", 3", 3-1/2", 4"**



For use in  
commercial applications.

## Heavy Duty Drain Base



- For use with heavy duty floor drains
- For 3-1/2" IPS threaded tailpieces

PART NO.	SIZE	PAN	HEIGHT	CTN QTY
D80097	3" no hub	10-1/2"	3-1/2"	1
D80099	3" inside caulk	10-1/2"	3-1/2"	1
D80090	3" no hub; 1/2 PT	10-1/2"	3-1/2"	1
D80096	4" no hub	10-1/2"	3-1/2"	1
D80098	4" inside caulk	10-1/2"	3-1/2"	1
D80091	4" no hub; 1/2 PT	10-1/2"	3-1/2"	1

## Code Blue No Caulk (Mechanical Joint) Drain Base



- 1/2" Primer tapped with brass plug
- Supplied with stainless steel bolts
- Test plug included
- Tapped for 3-1/2" spud

PART NO.	SIZE	PAN	SPUD	HEIGHT	CTN QTY
D65002	2"	7"	3-1/2"	2-1/2"	1
D66002	2"	9"	3-1/2"	3-1/8"	1
D65003	3"	7"	3-1/2"	2-1/2"	1
D66003	3"	9"	3-1/2"	3-1/8"	1
D66004	4"	9"	3-1/2"	3-1/8"	1

## Code Blue No Hub Drain Base



- Tapped for 3-1/2" spud
- 1/2" Primer tapped with brass plug
- Supplied with stainless steel bolts

PART NO.	SIZE	PAN	SPUD	HEIGHT	CTN QTY
D65102	2"	7"	3-1/2"	2-1/2"	1
D66102	2"	9"	3-1/2"	3-1/8"	1
D65103	3"	7"	3-1/2"	2-1/2"	1
D66103	3"	9"	3-1/2"	3-1/4"	1
D65104	4"	7"	3-1/2"	2-1/2"	1
D66104	4"	9"	3-1/2"	3-1/8"	1

## Code Blue Drain Base



- Tapped for 3-1/2" spud
- 1/2" Primer tapped with brass plug
- Supplied with stainless steel bolts

PART NO.	SIZE	PAN	SPUD	HEIGHT	CTN QTY
D65202	2" IPS	7"	3-1/2"	2-1/2"	1
D66202	2" IPS	9"	3-1/2"	3-1/8"	1
D65203	3" IPS	7"	3-1/2"	2-1/2"	1
D66203	3" IPS	9"	3-1/2"	3-1/8"	1
D66204	4" IPS	9"	3-1/2"	3-1/8"	1



### Code Blue No Caulk (Mechanical Joint) Slab Drain Base



- 1/2" primer tap with brass plug
- Less clamping ring
- Tapped for 3-1/2" spud

PART NO.	SIZE	PAN	SPUD	HEIGHT	CTN QTY
D67201	2"	7"	3-1/2"	3-3/8"	1

### Code Blue No Hub Slab Drain Base



- 1/2" primer tap with brass plug
- Less clamping ring
- Tapped for 3-1/2" spud

PART NO.	SIZE	PAN	SPUD	HEIGHT	CTN QTY
D67200	2"	7"	3-1/2"	3-3/8"	1
D67300	3"	7"	3-1/2"	3-3/8"	1
D67400	4"	7"	3-1/2"	3-3/8"	1

### Code Blue Push-On Drain Base



- 1/2" primer tapped with brass plug
- Tapped for 3-1/2" spud
- Supplied with stainless steel bolts
- For PVC connections, you must replace with extra heavy Dual Tite gaskets

PART NO.	SIZE	PAN	SPUD	HEIGHT	CTN QTY
D66200	2"	9"	3-1/2"	3-3/4"	1
D66300	3"	9"	3-1/2"	3-3/4"	1
D66400	4"	9"	3-1/2"	3-3/4"	1

### No Hub Base



- Use with CI strainers or covers for heavy trucking traffic
- Use with PB, NB, SS or CP strainers or covers for heavy pedestrian traffic

NOTE: 3" No hub will receive a 2" multi-tite gasket and therefore becomes a 2" push-on body. 4" No hub will receive a 3" multi-tite gasket.

PART NO.	NO HUB BASE x SPUD	HEIGHT	CTN QTY
D63300	3"x 3" IPS	4-1/4"	1
D63349	3"x 3-1/2" IPS	4-1/4"	1
D63350	4"X 3-1/2" IPS	4-1/4"	1
D63400	4"x 4" IPS	4-1/4"	1

### Gasket Connection Base



- Supplied with Multi-Tite gasket
- Use with CI strainers or covers for heavy trucking traffic
- Use with PB, NB, SS or CP strainers or covers for heavy pedestrian traffic

PART NO.	S.V. BASE x SPUD	HEIGHT	CTN QTY
D62300	3"x 3" IPS	5-1/4"	1
D62349	3"x 3-1/2" IPS	5-1/4"	1
D62350	4"x 3-1/2" IPS	5-1/2"	1
D62400	4"x 4" IPS	5-1/2"	1

### 3-1/2" Spud Extension



- 2-1/2"-4" extension for a 3-1/2 drain/cleanout spud
- Use on cast iron or PVC drain bodies when additional height is needed to offset inconsistent concrete pours

PART NO.	DESCRIPTION	CTN QTY
D60979	3-1/2" spud extension	1

### Cast Iron Spud with Round Strainer for Heavy Duty Drain Base



- For use with heavy duty floor drains

#### 2-1/2" IPS threaded throat for testing with round strainer

PART NO.	SPUD	STRAINER	CTN QTY
D62130	3" IPS	4-9/16" CI	1
D62131	3" IPS	5" NB with ring	1
D62132	3" IPS	5" PB with ring	1

#### 3" IPS threaded throat for testing with round strainer

PART NO.	SPUD	STRAINER	CTN QTY
D62135	3-1/2" IPS	5-1/2" CI	1
D62136	3-1/2" IPS	6" NB with ring	1
D62137	3-1/2" IPS	6" PB with ring	1

#### 3-1/2" IPS threaded throat for testing with round strainer

PART NO.	SPUD	STRAINER	CTN QTY
D62140	4" IPS	5-1/2" CI	1
D62141	4" IPS	6" NB with ring	1
D62142	4" IPS	6" PB with ring	1

### Plastic Spud with Square Strainer and Top for Heavy Duty Drain Base



- For use with heavy duty floor drains
- 5" round cover with 7" square top

PART NO.	IPS	STRAINER	CTN QTY
D56500	3"	5" PB	1
D56501	3"	5" NB	1
D56502	3-1/2"	5" PB	1
D56503	3-1/2"	5" NB	1
D56504	4"	5" PB	1
D56505	4"	5" NB	1

### 3-1/2" Metal Spud with Round Strainer



• For use with floor drains

PART NO.	IPS	STRAINER	CTN/MSTR
D60986	3-1/2"	4" NB	1/40
D60987	3-1/2"	4" PB	1/40
<b>Replacement Strainer</b>			
D60966	Replacement strainer for D60986		1/50
D60967	Replacement strainer for D60987		1/100

### 3-1/2" Metal Spud with Square Strainer



• For use with floor drains

PART NO.	IPS	STRAINER	SCREWS	CTN/MSTR
D60954	3-1/2"	5" CP	4 (3-7/8")	1/20
D60960	3-1/2"	5" PB	4 (3-7/8")	1/20
D60962	3-1/2"	5" NB	4 (3-7/8")	1/20
D60961	3-1/2"	6" PB	4 (4-7/8")	1/12
D60963	3-1/2"	6" NB	4 (4-7/8")	1/12

### Metal Spud with Round Strainer



• For use with floor drains

PART NO.	IPS	STRAINER	SCREWS	CTN/MSTR
D60980	2"	4" SS stamped	2 (3-3/8")	1/50
D60981	2"	4" Chrome cast	2 (3-3/8")	1/50
D60982	2"	4" PB cast	2 (3-3/8")	1/50
D60970	2"	6" CP	2 (5")	1/30
D60975	2"	6" PB	2 (5")	1/30
D60955	2"	5" NB	3 (3-7/8")	1/30
D60956	3"	5" PB	3 (3-7/8")	1/30
D60986	3-1/2"	4" NB	2 (3-1/4")	1/40
D60987	3-1/2"	4" PB	2 (3-1/4")	1/40
D60990	3-1/2"	5" CP	3 (3-7/8")	1/40
D60991	3-1/2"	5" PB	3 (3-7/8")	1/40
D60996	3-1/2"	5" NB	3 (3-7/8")	1/30
D60997	3-1/2"	6" NB	3 (4-3/4")	1/20
D60992	3-1/2"	6" CP	2 (5")	1/20
D60993	3-1/2"	6" PB	2 (5")	1/20
D60994	3-1/2"	8" CP	4 (6-3/4")	1/10
D60995	3-1/2"	8" PB	4 (6-3/4")	1/10
D60998	3-1/2"	8" NB	4 (6-3/4")	1/12
D60989	3-1/2"	9" PB	4 (7-5/8")	1/12
D60999	3-1/2"	9" NB	4 (7-5/8")	1/12
D60958	4"	5" NB	3 (3-7/8")	1/30
D60959	4"	5" PB	3 (3-7/8")	1/30

Ⓢ Items marked with the Jones Stephens logo are "You Need It... We Got It" Items.

### Funnel



- Vandal-proof installation
- Fits virtually any floor/shower drain
- Funnel tapped for 10-24 screws which are supplied with washers

PART NO.	DESCRIPTION	CTN/MSTR
F65400	4" funnel	1
F65600	6" funnel	1/18

### The Green Drain Waterless Trap Seal



- Requires NO caulk or expensive installation tool
- Easy to install and easy to remove - NO pliers needed
- Durable - will not break during installation or removal
- Seals tight - NO leaking

PART NO.	DESCRIPTION	CTN/MSTR
P24001	2" waterless trap seal	1/96
P24002	3" waterless trap seal	1/96
P24003 Ⓢ	3-1/2" waterless trap seal	1/96
P24004	4" waterless trap seal	1/96

F

# Cast Iron General Purpose/Utility Drains

Pages 252-253

SIZES: 1-1/2", 2", 3", 4"



For use in residential and commercial applications.

F

## Area Drain



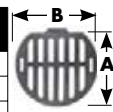
- Full waterway
- Lip secures strainer

### DRAIN SPECS

SIZE	TOP WIDTH	OVERALL HEIGHT
2"	4-7/8"	3-1/4"
3"	6-3/16"	3-1/4"
4"	7-3/16"	3-1/4"

### STRAINER SPECS

SIZE	A	B
2"	4-1/4"	4-1/4"
3"	5-3/8"	5-5/8"
4"	6-11/16"	6-11/16"



PART NO.	DESCRIPTION	CTN QTY
D76002	2" inside caulk drain	8
D77002	2" no hub drain	8
D76012	2" inside caulk CP area drain with strainer	8
D76092	2" strainer only	1
D76003	3" inside caulk drain	4
D77003	3" no hub drain	4
D76013	3" inside caulk CP area drain with strainer	4
D76093	3" strainer only	1
D76004	4" inside caulk drain	4
D77004	4" no hub drain	4
D76014	4" inside caulk CP area drain with strainer	4
D76094	4" strainer only	1

## Cast Iron Gasket Connection Drain



- Supplied with Multi-Tite gasket
- Just lube gasket and push over S.V. or N.H. cast iron pipe
- NB and PB are for heavy pedestrian traffic areas

PART NO.	SIZE	STRAINER	CTN QTY
D62950	3"	5" NB round with ring	1
D62951	3"	5" PB round with ring	1
D62952	3"	4" CI round	1
D62960	4"	6" NB round with ring	1
D62961	4"	6" PB round with ring	1
D62962	4"	5" CI round	1

## Kentucky Drain



- Inside caulk

PART NO.	DESCRIPTION	CTN QTY
C73003	3" inside caulk drain	4
C73093	3" strainer only	1
C73192	3" drain with 2" hole in strainer	4
C73193	3" strainer only with 2" hole	1
C73004	4" inside caulk drain	4
C73094	4" strainer only	1



**St. Louis Drain**



- Heavy duty loose set strainer
- Inside caulk

PART NO.	DESCRIPTION	CTN QTY
C72002	2" inside caulk	8
C72003	3" inside caulk	4
C72004	4" inside caulk	2
C72093	6-1/4" OD round strainer	1

**Inside Caulk Shower Stall Drain**



- Designed for prefab shower stalls
- Snap in stainless steel strainer
- Fits 2" Schedule 40 and cast iron pipe
- Can be adapted to no caulk with gasket
- 4-1/4" OD strainer

PART NO.	DESCRIPTION	STRAINER	CTN QTY
D40102	2" inside caulk	4" SS round	36
D40202	2" inside caulk	4" PB round	20
D60101	Gasket to make unit no caulk		1

**IPS Shower Stall Drain**



- Designed for prefab shower stalls
- Snap in stainless steel strainer
- 4-1/4" O.D. strainer

PART NO.	SIZE	STRAINER	CTN QTY
D40104	1-1/2"	4" SS round	36
D40204	1-1/2"	4" PB round	20
D40103	2"	4" SS round	36
D40203	2"	4" PB round	20

**FIP Shower Stall Drain**



- Cast brass body
- Stainless steel strainer

PART NO.	SIZE	BODY	STRAINER	CTN QTY
D40150	1-1/2"	Cast brass	SS round	100
D40200	2"	Cast brass	SS round	100

**Brass Inside Caulk Floor Drain**



- For use where pan liner is not required
- Brass body

PART NO.	DESCRIPTION	BODY	STRAINER	CTN QTY
D76601	2" inside caulk	Brass	SS round	50

**Urinal Drain**



- Brass body with stainless steel strainer

PART NO.	DESCRIPTION	CTN QTY
D45002	2" IPS	40

**Urinal Drain Flange Kit**



- Brass
- Kit includes all necessary hardware
- Center-to-center for bolt holes is 4-1/4"

PART NO.	DESCRIPTION	CTN QTY
F10005	2" IPS x 4-1/4"	50

**Combination Drain Trap**



- Bolt-down clamping collar
- Weep holes and grooves in clamping flange

PART NO.	DESCRIPTION	STRAINER	CTN QTY
J60060	2" IPS	4" SS round	1
J60061	2" IPS	4" CP brass round	1
J60062	2" IPS	4" PB round	1

**Floor Drain with Trap**



- Throat of drain is threaded for backwater device D70500

**Concealed Cleanout**

PART NO.	DESCRIPTION	CTN QTY
D70001	2" drain	1
D70011	2" drain with backwater device	1
D70098	6-3/8" cast iron strainer	1

**Exposed Cleanout**

D70020	2" drain with backwater device	1
D70022	2" drain with 1/2" PT	1
D71103	3" drain - backwater device not compatible	1
D70021	2" drain with backwater device	1

**Des Moines Pattern Floor Drain**



- Bolt down lid
- Integral trap

PART NO.	DESCRIPTION	CTN QTY
D71003	3" with trap	1
D71004	Strainer for Des Moines (screws not included)	1

**Backwater Device**



- Sleeve type
- Ball included

PART NO.	DESCRIPTION	CTN QTY
D70500	2" MIP brass body	50
B06001	2" MIP plastic body	50
B70499	2" plastic ball	1300

# Cast Iron Commercial Cleanouts

Pages 254-257

F

**SIZES: 2", 3", 4", 6"**



For use in applications where height adjustments are necessary.

## Push-On Cleanout



- Meets ASTM A74-98 and ASME A112.36.2M-91
- Cut pipe to desired level, lube gasket and push-on pipe, tap with lead hammer to seat, then install plug
- Schedule 40 unit fits plastic and extra heavy cast iron pipe

### Less Gasket

PART NO.	PIPE SIZE	PLUG	HEIGHT	CTN QTY
C36003	3" SV	2-1/2" raised head	3"	8
C36013	3" SV	2-1/2" countersunk	3"	8
C36004	4" SV	3-1/2" raised head	3"	8
C36014	4" SV	3-1/2" countersunk	3"	8
C36024	4" Sch.40	3-1/2" raised head	3"	8
C36034	4" Sch.40	3-1/2" countersunk	3"	8
C36006	6" SV	4" raised head	2-3/4"	4
C36016	6" SV	4" countersunk	2-3/4"	4

### With Gasket

PART NO.	PIPE SIZE	PLUG	HEIGHT	CTN QTY
C36104	4" SV	3-1/2" raised head	3-1/4"	8
C36114	4" SV	3-1/2" countersunk	3-1/4"	8
C36124	4" Sch.40	3-1/2" raised head	3-1/4"	8
C36134	4" Sch.40	3-1/2" countersunk	3-1/4"	8
C36106	6" SV	4" raised head	3"	4
C36116	6" SV	4" countersunk	3"	4

## No Hub Cleanout with Plug



### Southern Code Plug

PART NO.	PIPE SIZE	PLUG	HEIGHT	CTN QTY
C38402	2"	1-1/2" raised head	2-1/8"	10
C39402	2"	1-1/2" countersunk	2-1/8"	10
C38403	3"	2-1/2" raised head	2-1/8"	10
C39403	3"	2-1/2" countersunk	2-1/8"	10
C38404	4"	3-1/2" raised head	2-1/8"	10
C39404	4"	3-1/2" countersunk	2-1/8"	10

### Heavy Plug

PART NO.	PIPE SIZE	PLUG	HEIGHT	CTN QTY
C38502	2"	1-1/2" raised head	2-1/8"	10
C39502	2"	1-1/2" countersunk	2-1/8"	10
C38503	3"	2-1/2" raised head	2-1/8"	10
C39503	3"	2-1/2" countersunk	2-1/8"	10
C38504	4"	3-1/2" raised head	2-1/8"	10
C39504	4"	3-1/2" countersunk	2-1/8"	10

### New Orleans Code Plug

PART NO.	PIPE SIZE	PLUG	HEIGHT	CTN QTY
C40102	2"	1-1/2" plug	2-1/4"	10
C40103	3"	2-1/2" plug	2-1/4"	10
C40104	4"	3-1/2" plug	2-1/4"	10

## Plain End Cast Iron Cleanout- Short Pattern with Southern Code Plug



• Fits flush with hub

PART NO.	PIPE SIZE	PLUG	HEIGHT	CTN QTY
C38102	2"	1-1/2" raised head	2-7/8"	10
C39102	2"	1-1/2" countersunk	2-7/8"	10
C38103	3"	2-1/2" raised head	3-5/8"	10
C39103	3"	2-1/2" countersunk	3-5/8"	10
C38104	4"	3" raised head	3"	10
C39104	4"	3" countersunk	3"	10
C38114	4"	3-1/2" raised head	3"	10
C39114	4"	3-1/2" countersunk	3"	10

## Plain End Cleanout Long Pattern



• For use with service weight (caulk into hub) or no-hub (use coupling)

With Southern Code Plug

PART NO.	PIPE SIZE	PLUG	HEIGHT	CTN QTY
C38002	2"	1-1/2" raised head (low sq.)	3-1/4"	12
C39002	2"	1-1/2" countersunk	3-1/4"	12
C38003	3"	2-1/2" raised head ( low sq.)	4"	12
C39003	3"	2-1/2" countersunk	4"	12
C38004	4"	3" raised head (low sq.)	4"	8
C39004	4"	3" countersunk	4"	8
C38014	4"	3-1/2" raised head (low sq.)	4"	8
C39014	4"	3-1/2" countersunk	4"	8
C38005	5"	4" raised head (low sq.)	3-1/2"	4
C39005	5"	4" countersunk	3-1/2"	4
C38006	6"	5" raised head (low sq.)	4"	2
C39006	6"	5" countersunk	4"	2

With Heavy Pattern Plug

PART NO.	PIPE SIZE	PLUG	HEIGHT	CTN QTY
C38202	2"	1-1/2" raised head (hex)	3-1/4"	12
C39202	2"	1-1/2" countersunk	3-1/4"	12
C38203	3"	2-1/2" raised head (hex)	4"	12
C39203	3"	2-1/2" countersunk	4"	12
C38204	4"	3" raised head (hex)	4"	8
C39204	4"	3" countersunk	4"	8
C38214	4"	3-1/2" raised head (hex)	4"	8
C39214	4"	3-1/2" countersunk	4"	8
C38205	5"	4" raised head (hex)	3-1/2"	4
C39205	5"	4" countersunk	3-1/2"	4
C38206	6"	5" raised head (hex)	4"	2
C39206	6"	5" countersunk	4"	2

## Cleanout Ferrule with New Orleans Code Plug



• Service weight

PART NO.	PIPE SIZE	PLUG	HEIGHT	CTN QTY
C40002	2" SV	1-1/2"	3"	12
C40003	3" SV	2-1/2"	4"	12
C40004	4" SV	3 1/2"	4"	8
C40006	6" SV	5"	4"	2

## Plumb Lock Adjustable Cleanout



• Supplied with Multi-Tite gasket  
• Similar to Zurn Neo-Loc line

3" Spud with 3" Gasket Connection

PART NO.	PIPE SIZE	COVER	BODY HEIGHT	ADJ. HEIGHT	CTN QTY
D62330	3"	5" CI round	5-1/4"	5-7/8" - 7"	1
D62333	3"	5" NB round	5-1/4"	5-7/8" - 7"	1
D62334	3"	5" PB round	5-1/4"	5-7/8" - 7"	1
D62335	3"	5" CP round	5-1/4"	5-7/8" - 7"	1

4" Spud with 4" Gasket Connection

PART NO.	PIPE SIZE	COVER	BODY HEIGHT	ADJ. HEIGHT	CTN QTY
D62433	4"	5" NB round	5-1/2"	6-1/8" - 7-1/4"	1
D62434	4"	5" PB round	5-1/2"	6-1/8" - 7-1/4"	1
D62443	4"	5" NB round w/4" plug	5-1/2"	6-1/8" - 7-1/4"	1
D62444	4"	5" PB round w/4" plug	5-1/2"	6-1/8" - 7-1/4"	1

4" Spud with 6" Gasket Connection

PART NO.	PIPE SIZE	COVER	BODY HEIGHT	ADJ. HEIGHT	CTN QTY
D62601	6"	5" NB round	3-1/4"	3-5/8" - 4-3/4"	1
D62602	6"	5" PB round	3-1/4"	3-5/8" - 4-3/4"	1

### No Hub Adjustable Cleanout



3" Spud					
PART NO.	PIPE SIZE	COVER	BODY HEIGHT	ADJ. HEIGHT	CTN QTY
D63330	3"	5" CI round	4-1/4"	4-7/8" - 6"	1
D63333	3"	5" NB round	4-1/4"	4-7/8" - 6"	1
D63334	3"	5" PB round	4-1/4"	4-7/8" - 6"	1
D63335	3"	5" CP round	4-1/4"	4-7/8" - 6"	1

4" Spud					
PART NO.	PIPE SIZE	COVER	BODY HEIGHT	ADJ. HEIGHT	CTN QTY
D63433	4"	5" NB round	4-1/4"	4-7/8" - 6"	1
D63434	4"	5" PB round	4-1/4"	4-7/8" - 6"	1

### Adjustable Plain End Cleanout



- CI cover is for forklift or heavy trucking traffic
- NB and PB covers are for heavy pedestrian traffic
- Cleanout body with brass plug
- Can also be caulked into hub

PART NO.	PIPE SIZE	COVER	ADJ. HEIGHT	CTN QTY
C33021	2"	5 1/4" CI round with center screw	3-1/8" - 4-1/4"	1
C33022	2"	5 1/2" NB round with ring	3" - 4-3/4"	1
C33023	2"	5 1/2" PB round with ring	3" - 4-3/4"	1
C33031	3"	5 1/4" CI round with center screw	4" - 5-3/4"	1
C33032	3"	5 1/2" NB round with ring	4-1/4" - 6"	1
C33033	3"	5 1/2" PB round with ring	4-1/4" - 6"	1
C33044	4"	6 3/16" CI with center screw	5-1/8" - 6-1/8"	1
C33045	4"	6 1/2" NB round with ring	5-3/8" - 6-3/8"	1
C33046	4"	6 1/2" PB round with ring	5-3/8" - 6-3/8"	1

### Adjustable Push-On Cleanout for Cast Iron Pipe



- Supplied with gasket for cast iron pipe
- CI cover is for forklift or heavy trucking traffic
- NB and PB covers are for heavy pedestrian traffic
- Cleanout body with brass plug

PART NO.	PIPE SIZE	COVER	ADJ. HEIGHT	CTN QTY
C33121	3"	5 1/4" CI round with center screw	3-7/8" - 4-3/4"	1
C33122	3"	5 1/2" NB round with ring	4-1/8" - 5"	1
C33123	3"	5 1/2" PB round with ring	4-1/8" - 5"	1
C33144	4"	6 3/16" CI round with center screw	4-7/8" - 5-3/4"	1
C33145	4"	6 1/2" NB round with ring	5" - 6"	1
C33146	4"	6 1/2" PB round with ring	5" - 6"	1

### Adjustable Cleanout for Plastic Pipe



- CI cover is for forklift or heavy trucking traffic
- NB and PB covers are for heavy pedestrian traffic
- Cleanout body with plastic plug

PART NO.	HEIGHT ADJUSTMENT	PART NO.	HEIGHT ADJUSTMENT
C33221	2-7/8" - 3-7/8"	C33321	2-7/8" - 3-7/8"
C33222	3-1/8" - 4-1/8"	C33322	3-1/8" - 4-1/8"
C33223	3-1/8" - 4-1/8"	C33323	3-1/8" - 4-1/8"
C33231	4" - 5"	C33331	4" - 5"
C33232	4-1/4" - 5-1/4"	C33332	4-1/4" - 5-1/4"
C33233	4-1/4" - 5-1/4"	C33333	4-1/4" - 5-1/4"
C33244	5-1/8" - 6-1/4"	C33344	5-1/8" - 6-1/4"
C33245	5-3/8" - 6-1/2"	C33345	5-3/8" - 6-1/2"
C33246	5-3/8" - 6-1/2"	C33346	5-3/8" - 6-1/2"

PART NO.	SIZE	COVER	MATERIAL	CTN QTY
C33221	2"	5-1/4" CI round with center screw	PVC	1
C33321	2"	5-1/4" CI round with center screw	ABS	1
C33222	2"	5-1/2" NB round with ring	PVC	1
C33322	2"	5-1/2" NB round with ring	ABS	1
C33223	2"	5-1/2" PB round with ring	PVC	1
C33323	2"	5-1/2" PB round with ring	ABS	1
C33231	3"	5-1/4" CI round with center screw	PVC	1
C33331	3"	5-1/4" CI round with center screw	ABS	1
C33232	3"	5-1/2" NB round with ring	PVC	1
C33332	3"	5-1/2" NB round with ring	ABS	1
C33233	3"	5-1/2" PB round with ring	PVC	1
C33333	3"	5-1/2" PB round with ring	ABS	1
C33244	4"	6-3/16" CI round with center screw	PVC	1
C33344	4"	6-3/16" CI round with center screw	ABS	1
C33245	4"	6-1/2" NB round with ring	PVC	1
C33345	4"	6-1/2" NB round with ring	ABS	1
C33246	4"	6-1/2" PB round with ring	PVC	1
C33346	4"	6-1/2" PB round with ring	ABS	1

### Adjustable Cleanout for Plastic Pipe Hub



- CI cover is for forklift or heavy trucking traffic
- NB and PB covers are for heavy pedestrian traffic
- Cleanout body with plastic plug

PART NO.	HEIGHT ADJUSTMENT	PART NO.	HEIGHT ADJUSTMENT
C33444	3" - 4-1/2"	C33544	3" - 4-1/2"
C33445	3-1/4" - 4-3/4"	C33545	3-1/4" - 4-3/4"
C33446	3-1/4" - 4-3/4"	C33546	3-1/4" - 4-3/4"

PART NO.	SIZE	COVER	MATERIAL	CTN QTY
C33444	4"	6-3/16" CI round with center screw	PVC	1
C33544	4"	6-3/16" CI round with center screw	ABS	1
C33445	4"	6-3/16" NB round with ring	PVC	1
C33545	4"	6-3/16" NB round with ring	ABS	1
C33446	4"	6-3/16" PB round with ring	PVC	1
C33546	4"	6-3/16" PB round with ring	ABS	1

### Adjustable Access Cover



- CI cover is for forklift or heavy trucking traffic
- NB and PB covers are for heavy pedestrian traffic
- Designed to fit over 2", 3" and 4" plastic adapter, cast iron cleanout, ferrules and various drainage piping (2" x 3" fits 2" and 3" bodies)
- 3 set screws allow for vertical adjustment

PART NO.	PIPE SIZE	COVER	HEIGHT	INSIDE C.O.	CTN QTY
C33001	2" & 3"	5-1/4" CI round with center screw	2-1/8"	4-9/16"	1
C33002	2" & 3"	5-1/2" NB round with ring	2-1/8"	4-9/16"	1
C33003	2" & 3"	5-1/2" PB round with ring	2-1/8"	4-9/16"	1
C33004	4"	6-3/16" CI round with center screw	2-5/8"	5-5/16"	1
C33005	4"	6-1/2" NB round with ring	2-5/8"	5-5/16"	1
C33006	4"	6-1/2" PB round with ring	2-5/8"	5-5/16"	1

### Adjustable Floor Cleanout



- Adjusts 2-1/2"
- 4" cast iron body

PART NO.	PIPE SIZE	COVER	HEIGHT	INSIDE C.O.	CTN QTY
A40001	4"	5" CP	5-1/4"	3-3/4"	1
A40002	4"	5" PB	5-1/4"	3-3/4"	1
A40003	4"	5" NB	5-1/4"	3-3/4"	1

### Heavy Duty Adjustable Access Cover



- Scoriated cover
- Fits any 6" pipe
- CI top is for forklift or heavy trucking traffic for up to 2000 lbs.
- 3 bolts secure the cleanout while puring concrete

PART NO.	PIPE SIZE	DESCRIPTION	HEIGHT	CTN QTY
C33088	6"	CI cleanout	3"	1

### Heavy Duty Cleanout



- Scoriated cover
- Fits any 6" pipe
- 3 bolts secure the cleanout while puring concrete

PART NO.	PIPE SIZE	DESCRIPTION	HEIGHT	INSIDE C.O.	CTN QTY
D76005	6"	CI cleanout	5-3/8"	6-3/4"	1

Items marked with the Jones Stephens logo are "You Need It...We Got It" Items.

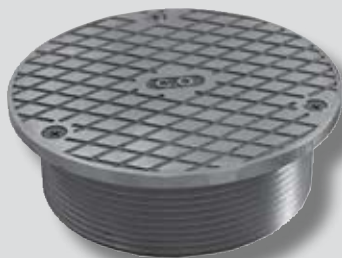


# Cast Iron Commercial Cleanout Components

Pages 258-259

F

SIZES: 2", 3", 3-1/2", 4", 5", 6"



For use in  
commercial applications.

## No Hub Cleanout Body



PART NO.	PIPE SIZE	TAP SIZE	HEIGHT	CTN QTY
C37102	2" Body	1-1/2"	2-1/8"	10
C37103	3" Body	2-1/2"	2-1/8"	10
C37104	4" Body	3-1/2"	2-1/8"	10

## Plain End Cast Iron Cleanout



- Short pattern less plug
- Fits flush with hub

PART NO.	PIPE SIZE	TAP SIZE	HEIGHT	CTN QTY
C37302	2"	1-1/2"	2-3/4"	12
C37303	3"	2-1/2"	3-1/2"	12
C37304	4"	3"	3"	8
C37314	4"	3-1/2"	3"	8

## Plain End Cast Iron Cleanout



- Long pattern less plug
- Meets ASTM A-74

PART NO.	PIPE SIZE	TAP SIZE	HEIGHT	CTN QTY
C37002	2"	1-1/2"	2-3/4"	12
C37003	3"	2-1/2"	4"	12
C37004	4"	3"	4"	8
C37014	4"	3-1/2"	4"	8
C37005	5"	4"	3-1/2"	4
C37006	6"	5"	4"	2

## No Hub Base



- Use with CI strainers or covers for heavy trucking traffic
- Use with PB, NB, SS or CP strainers or covers for heavy pedestrian traffic

PART NO.	PIPE SIZE	TAP SIZE	HEIGHT	CTN QTY
D63300	3"	3" IPS	4-1/4"	1
D63349	3"	3-1/2 IPS	4-1/4"	1
D63350	4"	3-1/2 IPS	4-1/4"	1
D63400	4"	4" IPS	4-1/4"	1



## Gasket Connection Base



- Use with CI strainers or covers for heavy trucking traffic
- Use with PB, NB or CP strainers or covers for heavy pedestrian traffic
- Supplied with multi-tite gasket

PART NO.	PIPE SIZE	TAP SIZE	HEIGHT	CTN QTY
D62300	3"	3" IPS	5"	1
D62349	3"	3-1/2" IPS	5-1/4"	1
D62350	4"	3-1/2" IPS	5-1/4"	1
D62400	4"	4" IPS	5-1/4"	1

## Cast Iron Spud with Cover for Heavy Duty Cleanout



- For use with heavy duty cleanouts

### 2-1/2" IPS Brass Plug with Round Cover

PART NO.	SIZE	COVER	CTN QTY
D62230	3"	5" CI round	1
D62231	3"	5" NB round with ring	1
D62232	3"	5" PB round with ring	1

### 3" IPS Brass Plug with Round Cover

PART NO.	SIZE	COVER	CTN QTY
D62235	3-1/2"	5" CI round	1
D62236	3-1/2"	6" NB round with ring	1
D62237	3-1/2"	6" PB round with ring	1

### 3-1/2" IPS Brass Plug with Round Cover

PART NO.	SIZE	COVER	CTN QTY
D62240	4"	5" CI round	1
D62241	4"	6" NB round with ring	1
D62242	4"	6" PB round with ring	1

## Plastic Spud with Cover and Square Top for Heavy Duty Cleanout



- For use with heavy duty cleanouts
- Round cover with 7" square top

### 2-1/2" IPS Brass Plug with Square Top

PART NO.	SIZE	COVER	CTN QTY
D59912	3"	7" PB square	1
D59913	3"	7" NB square	1

### 3" IPS Brass Plug with Square Top

PART NO.	SIZE	COVER	CTN QTY
D59910	3-1/2"	7" PB square	1
D59911	3-1/2"	7" NB square	1

### 3-1/2" IPS Brass Plug with Square Top

PART NO.	SIZE	COVER	CTN QTY
D59918	4"	7" PB square	1
D59919	4"	7" NB square	1

## Plastic Spud with Round Cover for Heavy Duty Cleanout



- For use with heavy duty cleanouts



### 2-1/2" IPS Plastic Plug with Round Cover

PART NO.	SIZE	COVER	CTN QTY
D59904	3"	6" PB round	1
D59908	3"	6" PB round with ring	1
D59905	3"	6" NB round	1
D59909	3"	6" NB round with ring	1
D59940	3"	6" CI round with ring	1

### 3" IPS Plastic Plug with Round Cover

PART NO.	SIZE	COVER	CTN QTY
D59943	3-1/2"	5" PB round	1
D59944	3-1/2"	5" PB round with ring	1
D59945	3-1/2"	5" NB round	1
D59946	3-1/2"	5" NB round with ring	1
D59901	3-1/2"	6" PB round	1
D59906	3-1/2"	6" PB round with ring	1
D59902	3-1/2"	6" NB round	1
D59907	3-1/2"	6" NB round with ring	1
D59941	3-1/2"	6" CI round with ring	1
D59914	4"	6" PB round	1
D59915	4"	6" PB round with ring	1
D59916	4"	6" NB round	1
D59917	4"	6" NB round with ring	1
D59942	4"	6" CI round with ring	1

## Metal Spud with Round Cover for Heavy Duty Cleanout



- For use with heavy duty cleanouts

### 2-1/2" IPS Brass Plug with Round Cover

PART NO.	SIZE	COVER	SCREWS	CENTER X CENTER	CTN/MSTR
C37803	3"	5" NB round	3	3-7/8"	1/20
C37801	3"	5" PB round	3	3-7/8"	1/20
C37800	3"	5" CP round	3	3-7/8"	1/20

### 3-1/2" IPS Brass Plug with Round Cover

PART NO.	SIZE	COVER	SCREWS	CENTER X CENTER	CTN/MSTR
C37810	3-1/2"	5" NB round	3	3-7/8"	1/18
C37811	3-1/2"	5" PB round	3	3-7/8"	1/18
C37805	4"	5" NB round	3	3-7/8"	1/20
C37806	4"	5" PB round	3	3-7/8"	1/20

### 4" IPS Brass Countersunk Plug with Round Cover

PART NO.	SIZE	COVER	SCREWS	CENTER X CENTER	CTN/MSTR
C37807	4"	6" NB round	2	4-7/8"	1/8
C37808	4"	6" PB round	2	4-7/8"	1/8

### New Orleans Code Brass Plug



PART NO.	DESCRIPTION	O.D.	CTN QTY
P55150	1-1/2"	1-13/16"	200
P55250	2-1/2"	2-3/4"	100
P55300	3"	3-3/8"	60
P55350	3-1/2"	4"	80
P55500	5"	5-1/2"	30

### Lead Fit-All Plug



- Cast iron cored
- Sizes are true measurement, not iron pipe size

PART NO.	DESCRIPTION	CTN/MSTR
P56200	2"	24/48
P56250	2-1/2"	24/48
P56300	3"	12/24
P56350	3-1/2"	12/24
P56400	4"	12/24
P56450	4-1/2"	12/12
P56500	5"	12/12
P56550	5-1/2"	12/12
P56600	6"	12/12

### Southern Code Brass Plug



PART NO.	DESCRIPTION	O.D.	CTN QTY
P50100	1" raised head	1-9/32"	200
P50125	1- 1/4" raised head	1-5/8"	250
P50150	1-1/2" raised head	1-7/8"	200
P51150	1-1/2" countersunk	1-7/8"	200
P50200	2" raised head	2-3/8"	200
P51200	2" countersunk	2-3/8"	200
P50250	2-1/2" raised head	2-7/8"	200
P51250	2-1/2" countersunk	2-7/8"	200
P50300	3" raised head	3-3/8"	120
P51300	3" countersunk	3-3/8"	120
P50350	3-1/2" raised head	3-7/8"	90
P51350	3-1/2" countersunk	3-7/8"	120
P50400	4" raised head	4-1/2"	90
P51400	4" countersunk	4-1/2"	90
P50500	5" raised head	5-1/2"	50
P51500	5" countersunk	5-1/2"	50
P50600	6" raised head	6-1/2"	30
P51600	6" countersunk	6-1/2"	30
P50800	8" raised head	8-1/2"	15
P51800	8" countersunk	8-1/2"	15
P50999	10" raised head	10-5/8"	10

### Heavy Pattern Brass Plug



PART NO.	DESCRIPTION	O.D.	CTN QTY
P52150	1-1/2" raised head	1-3/4"	100
P53150	1-1/2" countersunk	1-3/4"	200
P52200	2" raised head	2-3/8"	100
P53200	2" countersunk	2-3/8"	200
P52250	2-1/2" raised head	2-3/4"	60
P53250	2-1/2" countersunk	2-3/4"	100
P52300	3" raised head	3-1/2"	60
P53300	3" countersunk	3-1/2"	120
P52350	3-1/2" raised head	3-7/8"	60
P53350	3-1/2" countersunk	3-7/8"	80
P52400	4" raised head	4-3/8"	40
P53400	4" countersunk	4-3/8"	60
P52500	5" raised head	5-1/2"	30
P53500	5" countersunk	5-1/2"	40

Items marked with the Jones Stephens logo are "You Need It... We Got It" Items.



**Code Pattern Plug**



• Meets ASTM A74-98

PART NO.	DESCRIPTION	CTN QTY
P59300	3" raised head	50
P59333	3" countersunk	50
P59350	3-1/2" raised head	50
P59355	3-1/2" countersunk	50
P59400	4" raised head	50
P59444	4" countersunk	50

**Slotted Brass Plug with 1/4" Tap**



• Tap is not through the plug

PART NO.	DESCRIPTION	CTN QTY
P58150	1-1/2" slotted	150
P58200	2" slotted	100
P58250	2-1/2" slotted	80
P58300	3" slotted	60
P58350	3-1/2" slotted	40
P58400	4" slotted	30

**Brass Plug For Extension Cover**



•Countersunk plug tapped 1/4-20

PART NO.	DESCRIPTION	O.D.	CTN QTY
P54150	1-1/2" countersunk	1-7/8"	200
P54200	2" countersunk	2-3/8"	200
P54250	2-1/2" countersunk	2-7/8"	150
P54300	3" countersunk	3-3/8"	100
P54350	3-1/2" countersunk	3-7/8"	100
P54400	4" countersunk	4-1/2"	80
P54500	5" countersunk	5-1/2"	40
P54600	6" countersunk	6-1/2"	30
P54800	8" countersunk	8-1/2"	12

**Extension Cover Set**



• Set includes stainless steel extension cover, brass countersunk or slotted plug and 1/4- 20 x 4" flat head machine screws

**Wall Cover (24 gauge)**

PART NO.	PLUG	COVER	CTN QTY
C92150	1-1/2" countersunk	3"	10
C92151	1-1/2" slotted	3"	10
C92200	2" countersunk	4"	10
C92202	2" slotted	4"	10
C92250	2-1/2" countersunk	5"	10
C92252	2-1/2" slotted	5"	10
C92300	3" countersunk	5"	10
C92301	3" countersunk	6"	10
C92303	3" slotted	6"	10
C92350	3-1/2" countersunk	6"	10
C92351	3-1/2" countersunk	7"	10
C92353	3-1/2" slotted	7"	10
C92400	4" countersunk	7"	10
C92404	4" slotted	7"	10
C92500	5" countersunk	8"	10
C92600	6" countersunk	8"	5
C92601	6" countersunk	10"	5
C92800	8" countersunk	10"	5

**Floor Cover (16 gauge)**


PART NO.	PLUG	COVER	CTN QTY
C93150	1-1/2" countersunk	3"	10
C93200	2" countersunk	4"	10
C93250	2-1/2" countersunk	5"	10
C93300	3" countersunk	5"	10
C93301	3" countersunk	6"	10
C93350	3-1/2" countersunk	6"	10
C93351	3-1/2" countersunk	7"	10
C93400	4" countersunk	7"	10
C93500	5" countersunk	8"	10

### Stainless Steel Cleanout/Extension Cover



- Beveled edge
- 1500°F fire rating

#### Wall Mount (24 gauge)

PART NO.	SIZE	CTN/MSTR
C90300	3"	50/500
C90400	4"	25/200
C90500	5"	25/200
C90600 	6"	25/100
C90700	7"	25/100
C90800	8"	25/100
C90999	10"	25/50

#### Floor Mount (16 gauge)

PART NO.	SIZE	CTN/MSTR
C91300	3"	25/200
C91400	4"	25/200
C91500	5"	25/200
C91600	6"	25/100
C91700	7"	25/100
C91800	8"	25/50
C91999	10"	25/50

#### Wall Mount With 4" Bolt (24 gauge)

PART NO.	SIZE	CTN QTY
C90013	3"	25/200
C90014	4"	25/200
C90015	5"	25/200
C90016	6"	25/100
C90017	7"	25/100
C90018	8"	25/100
C90019	10"	25/50

#### Floor Mount With 4" Bolt (16 gauge)

PART NO.	SIZE	CTN QTY
C91013	3"	25/150
C91014	4"	25/150
C91015	5"	25/100
C91016	6"	25/75
C91017	7"	25/50
C91018	8"	25/50
C91019	10"	10/30

### Bolts for Cleanout/Extension Covers



- Flat slotted head plated machine screw

PART NO.	SIZE	CTN/MSTR
C90002	1/4"- 20 x 2-1/2"	100/1000
C90004	1/4"- 20 x 4"	100/1500
C90006	1/4"- 20 x 6"	100/1200

### High Impact Plastic Cleanout Cover Plate




- Polished chrome or white matte finish
- Individually bagged with # 14 wood screw included

#### Flat Design

PART NO.	SIZE	CTN/MSTR
C94004	4-1/4" Chrome finish	25/200
C94005	5-1/4" Chrome finish	25/200
C94007	7-1/4" Chrome finish	25/200
C94009	9-1/4" Chrome finish	25/100
C95004	4-1/4" White finish	25/200
C95005	5-1/4" White finish	25/200
C95007	7-1/4" White finish	25/200
C95009	9-1/4" White finish	25/100

#### Bell Design

PART NO.	SIZE	CTN/MSTR
C96004	4-1/4" Chrome finish	25/200
C96005	5-1/4" Chrome finish	25/200
C96007	7-1/4" Chrome finish	25/200
C96009	9-1/4" Chrome finish	25/100
C97004	4-1/4" White finish	25/200
C97005 	5-1/4" White finish	25/200
C97007	7-1/4" White finish	25/200
C97009	9-1/4" White finish	25/100

### Trap Cover



- Stainless steel


PART NO.	DESCRIPTION	CTN/MSTR
C98001	5-3/4" Flat SS trap cover	150/300
C98002	5-3/4" Raised SS trap cover	50/200

### Stainless Steel Dome Cover Plate



- 1-3/4" depth
- 1500°F fire rating
- High grade stainless steel
- Individually bagged with # 14 wood screw and 1/4" x 2-1/2" machine screw

PART NO.	DESCRIPTION	CTN/MSTR
C98014	4" SS dome cover plate	60/240
C98016	6" SS dome cover plate	50/150
C98018	8" SS dome cover plate	50/100

 Items marked with the Jones Stephens logo are "You Need It... We Got It" Items.

## Inside Caulk Bell Trap



- Hinged lid
- Bell attached

PIPE SIZE	BODY	STRAINER	OUTLET HEIGHT	OVERALL HEIGHT
2"	6" x 6"	4-7/8"	1-3/4"	4-1/8"
3"	9" x 9"	6-3/4"	1-7/8"	4-7/8"
4"	12" x 12"	9-3/4"	1-3/4"	4-7/8"

PART NO.	DESCRIPTION	CTN QTY
D76202	6" x 6" x 2"	1
D76203	9" x 9" x 3"	1
D76204	12" x 12" x 4"	1

### Strainers less Hinge

PART NO.	DESCRIPTION	CTN QTY
D76205L	4-7/8" strainer for 6" x 6"	20
D76207L	6-3/4" strainer for 9" x 9"	20
D76209L	9-3/4" strainer for 12" x 12"	10

### Cast Iron Bell with Nut and Bolt

PART NO.	SIZE	CTN QTY
D76256	Bell for 6" x 6"	20
D76259	Bell for 9" x 9"	20
D76252	Bell for 12" x 12"	10

## No Hub Bell Trap



- Spigot outlet
- Hinged lid
- Bell attached

PIPE SIZE	BODY	STRAINER	OUTLET HEIGHT	OVERALL HEIGHT
2"	6" x 6"	4-7/8"	1-1/4"	3-1/4"
3"	9" x 9"	6-3/4"	1-1/2"	4-1/4"
4"	12" x 12"	9-3/4"	1-1/2"	4-7/8"

PART NO.	DESCRIPTION	CTN QTY
D76302	6" x 6" x 2"	1
D76303	9" x 9" x 3"	1
D76304	12" x 12" x 4"	1

### Strainers less Hinge

PART NO.	DESCRIPTION	CTN QTY
D76205L	4-7/8" strainer for 6" x 6"	20
D76207L	6-3/4" strainer for 9" x 9"	20
D76209L	9-3/4" strainer for 12" x 12"	10

### Cast Iron Bell with Nut and Bolt

PART NO.	DESCRIPTION	CTN QTY
D76256	Bell for 6" x 6"	20
D76259	Bell for 9" x 9"	20
D76252	Bell for 12" x 12"	10

## Spigot Outlet Bell Trap



- Loose lid
- Bell cast on

PIPE SIZE	BODY	STRAINER	OUTLET HEIGHT	OVERALL HEIGHT
2"	6" x 6"	4-7/8"	1-3/8"	3-1/2"
3"	9" x 9"	6-3/4"	1-1/2"	4-1/2"
4"	12" x 12"	9-3/4"	1-1/2"	4-7/8"

PART NO.	DESCRIPTION	CTN QTY
D76402	6" x 6" x 2"	1
D76403	9" x 9" x 3"	1
D76404	12" x 12" x 4"	1

### Replacement Strainer with Cast-In Bell

PART NO.	DESCRIPTION	CTN QTY
D76412	4-7/8" cast-in bell for 6" x 6"	20
D76413	6-3/4" cast-in bell for 9" x 9"	20
D76414	9-3/4" cast-in bell for 12" x 12"	10

## Pittsburgh Bell Trap



- Deep body
- 4" inside caulk

PIPE SIZE	BODY	STRAINER	OVERALL HEIGHT
4"	9" x 9"	6-3/4"	4-1/2"

PART NO.	DESCRIPTION	CTN QTY
B60994	9" x 9" x 4" Inside Caulk less bell	1

### Strainer Only (Loose Lid)

PART NO.	DESCRIPTION	CTN QTY
B60099	6-3/4" ID strainer	1

F

### Heavy Duty Floor Drain



- 8-1/2" heavy duty cast iron grate
- Cast iron sediment bucket

No Hub less Sediment Bucket					
PART NO.	SIZE	PAN	GRATE	HEIGHT	CTN QTY
D79703	3"	10-1/2"	9" CI	5 1/4"	1
D79704	4"	10-1/2"	9" CI	5 1/4"	1

No Hub with Sediment Bucket					
PART NO.	SIZE	PAN	GRATE	HEIGHT	CTN QTY
D79705	3"	10-1/2"	9" CI	5 1/4"	1
D79706	4"	10-1/2"	9" CI	5 1/4"	1

Inside Caulk less Sediment Bucket					
PART NO.	SIZE	PAN	GRATE	HEIGHT	CTN QTY
D79805	3"	10-1/2"	9" CI	5 1/4"	1
D79806	4"	10-1/2"	9" CI	5 1/4"	1

Inside Caulk with Sediment Bucket					
PART NO.	SIZE	PAN	GRATE	HEIGHT	CTN QTY
D79803	3"	10-1/2"	9" CI	5 1/4"	1
D79804	4"	10-1/2"	9" CI	5 1/4"	1

Sediment Bucket		
PART NO.	DESCRIPTION	CTN QTY
D50095	CI sediment bucket	1

### Code Blue No Caulk (Mechanical Joint) Cesspool Drain



- Supplied with stainless steel bolts
- Includes test plug
- UPC listed



PART NO.	SIZE	STRAINER	HEIGHT	CTN QTY
D76702	2"	6" CI	4 1/16"	1
D76703	3"	7" CI	4 1/16"	1
D76704	4"	8" CI	4 1/16"	1



- 3/4" Thick

PART NO.	DESCRIPTION	CTN QTY
D76705	Grate for D76702	1
D76706	Grate for D76703	1
D76707	Grate for D76704	1

### Caulk Cesspool with Recessed Grate



PART NO.	DESCRIPTION	CTN QTY
D76504	12" x 12" x 4"	1
D76519	Grate only	1

### Rainleader Cesspool



- For areas requiring downspout, rainleader and cesspool drain
- Grate secured by screw
- 12-3/4" diameter pan fits over outlet

PART NO.	DESCRIPTION	CTN QTY
J60030	4" hub inlet x 4" spigot outlet	1

### Square Cesspool Grate



PART NO.	DESCRIPTION	CTN QTY
D59156	6" x 6" square grate	10
D59158	8" x 8" square grate	5
D59160	10" x 10" square grate	2
D59162	12" x 12" square grate	2

### Round Slop Sink, Hydrant Cesspool



- 2" IPS outlet
- Removable Strainer

PART NO.	DESCRIPTION	CTN QTY
S55100	2" IPS ink painted	1
S55101	2" IPS galvanized cast iron	1

### Square Hydrant Cesspool



- Grate included
- Spigot outlet

PART NO.	DESCRIPTION	CTN QTY
S57034	11" x 11" x 4"	1
S57035	Grate only	1

## Porcelain Coated Floor Sink



- 12"x 12" white porcelain coated cast iron
- No hub and inside caulk
- Aluminum dome bottom strainer included

PART NO.	DESCRIPTION	CTN QTY
S55104	4" inside caulk 6" deep	1
S55004	4" inside caulk 8" deep	1
S55112	2" no hub 6" deep	1
S55113	3" no hub 6" deep	1
S55114	4" no hub 6" deep	1

### Top Grates Only To Fit Floor Sinks



PART NO.	DESCRIPTION	CTN QTY
S55010	Full top grate	1
S55075	Three-quarter top grate	1
S55050	Half top grate	1

## Aluminum Bottom Dome For Cast Iron Sink



- Fits all sizes porcelain coated cast iron sinks

BOTTOM OD	HEIGHT
5-3/8"	2-1/4"

PART NO.	DESCRIPTION	CTN QTY
S55115	Aluminum bottom dome- Fit All	1
S60002	2" aluminum bottom dome	10
S60003	3" aluminum bottom dome	10
S60004	4" aluminum bottom dome	10

## Plumlock Porcelain Floor Sink



- 12"x 12" white porcelain coated cast iron
- Aluminum dome strainer included
- Push-On Connection; gasket supplied

PART NO.	DESCRIPTION	CTN QTY
S55122	2" Plumlock floor sink- 6" deep	1
S55123	3" Plumlock floor sink- 6" deep	1
S55124	4" Plumlock floor sink- 6" deep	1

## Plumlock Gasket for Cast Iron Or Schedule 40 Pipe Connectors



- Fits 12" x 12" white porcelain coated cast iron Plumlock Sinks

PART NO.	DESCRIPTION	CTN QTY
S55192	2" PlumLock gasket	1
S55193	3" PlumLock gasket	1
S55194	4" PlumLock gasket	1

## Service Sink Faucet



- Chrome plated
- Integral stops
- Integrated vacuum breaker
- Complete with all mounting hardware
- Meets ASSE 1001
- Front hook to hang bucket

PART NO.	DESCRIPTION	CTN/MSTR
S55349	Service sink faucet with lever handles	1/8
S55350	Service sink faucet w/cross handles	1/6
S55351	Cross handle stem repair kit for S55350	1/100
S55352	Lever handle stem repair kit for S55349	1/100
S55353	Integral stop repair kit for S55349	1/100
S55354	Vacuum breaker repair kit (S55349 or S55350)	1/100

## Trap Standard



- Cast iron body with white coating
- Chrome plated brass strainer
- Fits American Standard\*, Kohler\*, Eljer\* and Crane\* cast iron service sinks

PART NO.	DESCRIPTION	CTN QTY
T00002	2" IPS	1
T00003	3" IPS	1
T00005	Base plate for trap standard	1
T00006	1-1/2" N.O. plug with gasket	1
T00009	Strainer and stud for trap standard	1

\* The manufacturers' names are used only to describe whose products the products will fit.

## Mop Service Basin



- One-piece molded construction; 24" x 24" x 10"
- Crushed stone with polyester resin
- Supplied with 3" gasketed connection and stainless steel strainer

PART NO.	DESCRIPTION	CTN QTY
S55240	Mop service basin	1

## Hose and Bracket for Service Sink



- Heavy duty 300# cloth-reinforced hose
- 5" x 3" stainless steel bracket with rubber grip
- 3/4" brass hose coupling at one end

PART NO.	DESCRIPTION	CTN QTY
M05001	Hose with bracket	1

## Mop Hanger for Service Sink



- 24" x 3" stainless steel hanger with three rubber tool grips
- Anchors included

PART NO.	DESCRIPTION	CTN/MSTR
M05003	Mop hanger	1/25

### Roof Drain with Cast Iron Dome



- 10" diameter pan
- Dome has 50 sq. Inches of drain area
- Cast iron dome

PART NO.	SIZE	PAN	DOMES	HEIGHT	CTN QTY
R19003	3" inside caulk	10"	5-1/2"	8"	1
R19005	3" no hub	10"	5-1/2"	8"	1
R19004	4" inside caulk	10"	5-1/2"	8"	1
R19006	4" no hub	10"	5-1/2"	8"	1
R18020	Cast iron roof dome		5-1/2"		1

### Code Blue No Hub Roof Drain with Square Pan



- 8 1/2" square pan
- Cast iron dome and drain
- Supplied with stainless steel bolts
- UPC listed

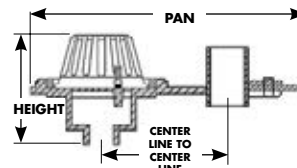


PART NO.	SIZE	PAN	HEIGHT	CTN QTY
R19202	2" No Hub	8-1/2"	9-1/2"	1
R19203	3" No Hub	8-1/2"	9-3/4"	1
R19204	4" No Hub	8-1/2"	9-3/4"	1
R19206	6" No Hub	8-1/2"	9-3/4"	1

### Code Blue No Hub Dual Roof Drain



- Supplied with stainless steel bolts
- Overflow
- UPC listed



PIPE SIZE	CENTER TO CENTER	PAN	OVERALL HEIGHT SINGLE	OVERALL HEIGHT DOUBLE
2"	8-1/2"	19"	8"	8-1/2"
3"	8-1/2"	19"	9-1/2"	10"
4"	8-1/2"	19"	10"	10-1/2"

### F Code Blue No Caulk (Mechanical Joint) Roof Drain with Square Pan



- 8 1/2" square pan
- Cast iron dome and drain
- Supplied with stainless steel bolts
- UPC listed



PART NO.	SIZE	STRAINER	HEIGHT	CTN QTY
R19102	2" no caulk	8-1/2"	9-1/2"	1
R19103	3" no caulk	8-1/2"	9-1/2"	1
R19104	4" no caulk	8-1/2"	9-1/2"	1

### Code Blue No Hub Side Outlet Roof Drain with Square Pan



PART NO.	SIZE	PAN	HEIGHT	CTN QTY
R19402	2"	8-1/2"	9-1/2"	1
R19403	3"	8-1/2"	9-1/2"	1
R19404	4"	8-1/2"	9-1/2"	1

#### Single Dome

PART NO.	SIZE	PAN	CTN QTY
R19302	2" no hub dual drain	19"	1
R19303	3" no hub dual drain	19"	1
R19304	4" no hub dual drain	19"	1

#### Double Dome

PART NO.	SIZE	PAN	CTN QTY
R19307	2" no hub dual dome drain	19"	1
R19305	3" no hub dual dome drain	19"	1
R19306	4" no hub dual dome drain	19"	1

#### Replacement Parts

PART NO.	SIZE	CTN QTY
R19099	Roof drain dome	1
R19100	Clamping ring	1



**Bar Grate**



• For hub openings in soil pipe

PART NO.	DESCRIPTION	DIAMETER	CTN QTY
D59102	2" (less legs)	2-3/4"	10
D59103	3" (less legs)	3-1/2"	10
D59104	4" (less legs)	4-7/8"	10
D59106	6" (less legs)	6-7/8"	10
D59101	4" (less legs)	4-7/8"	10
D59112	2" (with legs)	2-3/4"	10
D59113	3" (with legs)	3-3/4"	10
D59114	4" (with legs)	4-7/8"	10

**Perforated Sewer Strainer with Legs**



• For hub openings in clay sewer pipe

PART NO.	DESCRIPTION	DIAMETER	CTN QTY
D59124	4" sewer strainer	5-1/2"	10
D59126	6" sewer strainer	7-3/8"	5
D59128	8" sewer strainer	10-1/8"	5
D59130	10" sewer strainer	12-1/4"	2
D59132	12" sewer strainer	14-1/4"	2

**Sewer Box**



• Sewer lid is marked "sewer"  
• Water lid is marked "water"  
• Plain lid is unmarked

PART NO.	DESCRIPTION	CTN QTY
S36006	8" water lid and ring	1
S36007	8" sewer lid	1
S36008	8" sewer lid and ring	1
S36090	8" plain lid	1
S36091	8" plain lid and ring	1
S36011	10" water lid and ring	1
S36009	10" sewer lid only	1
S36010	10" sewer lid and ring	1
S36095	10" plain lid	1
S36096	10" plain lid and ring	1

**Ohio Style Grate**



• Cast iron grate

PART NO.	DESCRIPTION	CTN QTY
J60005	6" Ohio style grate	1

**Water Access Box**



• Lockable lid

PART NO.	DESCRIPTION	CTN QTY
J60026	6" x 6" x 2" water access box	6

**Perforated Vent Box**



PART NO.	DESCRIPTION	CTN QTY
J60027	6" x 6" x 2" perforated vent box	6

**Philadelphia Style Vent Box**



• Strainer secured by overlapping lug and screw  
• Integral cast baffles

PART NO.	DESCRIPTION	CTN QTY
J60004	4" inside caulk	1
J60094	Replacement strainer	1

**Fresh Air Inlet/Floor Drain**



PART NO.	DESCRIPTION	CTN QTY
J60007	3" spigot	15
J60008	4" spigot	15

**Vent Cap**



• Cast iron cap for 3" or 4" pipe

PART NO.	DESCRIPTION	CTN QTY
J60005	3" - 4" vent cap	10

### Lockable Vent Cap



- Cast iron grate fits inside spigot end of pipe
- Secured with adjustable screw and clamp

PART NO.	DESCRIPTION	CTN QTY
J60010	4" cast iron vent cap	10

### Brass Deck Plug



- Inside caulk
- Polished brass ring
- Cast brass body
- Skid-resistant scoriated lid

PART NO.	DESCRIPTION	CTN QTY
D28003	3" deck plug	20
D28004	4" deck plug	12

F

### Blind Plugs



No Hub		
PART NO.	DESCRIPTION	CTN QTY
D59202	2" blind plug	10
D59203	3" blind plug	10
D59204	4" blind plug	8
Service Weight		
PART NO.	DESCRIPTION	CTN QTY
D59302	2" blind plug	10
D59303	3" blind plug	8
D59304	4" blind plug	4

### Reading Style Cleanout



- 4" Inside caulk

PART NO.	DESCRIPTION	CTN QTY
J60012	Reading cleanout	1

### Cast Iron Backwater Valves



- Reduces backflow in drainage system
- All neoprene gaskets
- 300 series stainless bolts and washers
- Repairable in service
- Revolutionary design- that works!
- UPC listed

Service Weight				
PART NO.	SIZE	LENGTH	HUB	CTN QTY
B01013	3"	10-3/4"	5-1/8"	1
B01014	4"	11-3/4"	6-1/2"	1
B01016	6"	12-3/4"	7-1/4"	1
No Hub				
PART NO.	SIZE	LENGTH	HUB	CTN QTY
B01002	2"	10-3/4"	—	1
B01003	3"	11-3/4"	—	1
B01004	4"	12-3/4"	—	1
B01006	6"	14-1/2"	—	1
Replacement Flappers				
PART NO.	DESCRIPTION	CTN QTY		
B01017	2" bolt-in flapper and ring	1		
B01018	3" bolt-in flapper and ring	1		
B01019	4" bolt-in flapper and ring	1		
B01020	6" bolt-in flapper and ring	1		

### Reading Style Vent



- 4" Inside caulk

PART NO.	DESCRIPTION	CTN QTY
J60011	Reading vent	1

Items marked with the Jones Stephens logo are "You Need It... We Got It" Items.



**Test Tee**



- Available with or without plug
- Plug is Southern Code

**Service Weight Tee**

PART NO.	DESCRIPTION	LENGTH	PLUG	CTN QTY
T55002	2"x 2" less plug	10-3/8"	2"	1
T55012	2"x 2" with plug	10-3/8"	2"	1
T55003	3"x 3" less plug	12-1/2"	3"	1
T55013	3"x 3" with plug	12-1/2"	3"	1
T55004	4"x 4" less plug	13-7/8"	4"	1
T55014	4"x 4" with plug	13-7/8"	4"	1

**No Hub Tee**

PART NO.	DESCRIPTION	LENGTH	PLUG	CTN QTY
T56002	2"x 2" less plug	6-3/8"	2"	1
T56012	2"x 2" with plug	6-3/8"	2"	1
T56003	3"x 3" less plug	7-3/4"	3"	1
T56013	3"x 3" with plug	7-3/4"	3"	1
T56004	4"x 4" less plug	8-7/8"	4"	1
T56014	4"x 4" with plug	8-7/8"	4"	1

**Test Tee with Heavy Plug**



**Service Weight Tee**

PART NO.	DESCRIPTION	LENGTH	PLUG	CTN QTY
T55022	2"x 2" with plug	10-3/8"	2"	1
T55033	3"x 3" with plug	12-1/2"	3"	1
T55044	4"x 4" with plug	13-7/8"	4"	1

**No Hub Tee**

PART NO.	DESCRIPTION	LENGTH	PLUG	CTN QTY
T56022	2"x 2" with plug	6-3/8"	2"	1
T56033	3"x 3" with plug	7-3/4"	3"	1
T56044	4"x 4" with plug	8-7/8"	4"	1

**Cast Iron Single Vent Running Trap**



PART NO.	DESCRIPTION	CTN QTY
T64540	5"x 4" single vent running trap	1

**Tapped Saddle Tee**



- U-bolt included

PART NO.	DESCRIPTION	CTN QTY
T21001	3"x 1 1/2"	1
T21002	3"x 2"	1
T21003	4"x 1 1/2"	1
T21004	4"x 2"	1
S26008	6" x 7" (1/4" thick) closed cell foam gasket	1

**Repair Plate**



- U-bolt included

PART NO.	DESCRIPTION	CTN QTY
T21062	2" plate with u-bolt	1
T21063	3" plate with u-bolt	1
T21064	4" plate with u-bolt	1

F

### “T” Burner Bar



- 12-1/4" long by 1-3/8" high, tapped 1/2" IPS in ends and bottom
- Supplied with two 1/2" plugs and close nipple orifice

PART NO.	DESCRIPTION	LENGTH	HEIGHT	CTN QTY
L75080	Natural Gas	12-1/4"	1-3/8"	10
L75180	LPG	12-1/4"	1-3/8"	10

### Two Leg Burner



- Dimensions 14" long x 1-3/4" high x 2-1/4" wide
- Tapped 1/2" IPS on both ends and one leg
- Comes with two 1/2" IPS plugs and close nipple orifice
- Ledge over burner holes prevents clogging

PART NO.	DESCRIPTION	LENGTH	HEIGHT	CTN QTY
L75081	Natural Gas	14"	1-3/4"	10
L75181	LPG	14"	1-3/4"	10

### Round Burner



- 1-3/4" high x 4 1/2" wide, tapped 1/2" IPS in bottom and sides
- Supplied with close nipple orifice and 1/2" plug

PART NO.	DESCRIPTION	WIDTH	HEIGHT	CTN QTY
L75086	Natural Gas	4-1/2"	1-3/4"	10
L75186	LPG	4-1/2"	1-3/4"	10

### Rectangular Burner



- Dimensions 8-3/4" long x 1-1/2" high x 1-3/4" wide with 1/2" IPS inlet
- Supplied with close nipple orifice and removable lid
- Low profile

PART NO.	DESCRIPTION	LENGTH	HEIGHT	CTN QTY
L75085	Natural Gas	8-3/4"	1-1/2"	10
L75185	LPG	8-3/4"	1-1/2"	10

### Log Lighter Burner Bar



- Air mixing chamber
- Straight: 17" pipe plus 3" mixing chamber
- T-Pattern: Two 7" pipes plus 3" mixing chamber

PART NO.	DESCRIPTION	CTN QTY
L75091	Straight for natural gas	10
L75092	Straight for LPG	10
L75095	T-pattern for natural gas	10
L75096	T-pattern for LPG	10

### Log Lighter Valves

- CSA design certified
- Zinc escutcheon
- 1/4" Key included
- Individually tested (pressure test in open and closed position after installation)
- BTU rating: angle 188,000, straight 120,000
- To extend escutcheon use 1/2" pipe coupling and 1/2" pipe nipple

#### Standard Valve (7 turns open/close)



PART NO.	DESCRIPTION	CTN QTY
L75001	Chrome plated angle	36
L75002	Polished brass angle	36
L75006	Chrome plated straight	36
L75007	Polished brass straight	36

#### Ball Valve (1/4" turn)



PART NO.	DESCRIPTION	CTN QTY
L75040	Chrome plated angle	36
L75041	Polished brass angle	36
L75042	Chrome plated straight	36
L75043	Polished brass straight	36

#### Escutcheons Only

PART NO.	DESCRIPTION	CTN QTY
L75908	Chrome plated	36
L75909	Polished brass	36

Items marked with the Jones Stephens logo are "You Need It... We Got It" Items.

## 2-Way Combo Log Lighter Valve



- Straight or angle pattern
- 5/16" key and brass plug for extra outlet included

PART NO.	DESCRIPTION	CTN QTY
L75009	Chrome plated	10
L75010	Polished brass	10

## Log Lighter Valve with T-Burner



- Solid brass escutcheon, 1/4" key and close nipple orifice included
- Individually tested (pressure test open and closed after installation)
- Angle: 188,000 BTU/Straight: 120,000 BTU

PART NO.	DESCRIPTION	CTN QTY
L75406	Chrome plated angle natural gas	1
L75407	Polished brass angle natural gas	1
L75408	Chrome plated straight natural gas	1
L75409	Polished brass straight natural gas	1
L75400	Chrome plated angle LPG	1
L75401	Polished brass angle LPG	1
L75402	Chrome plated straight LPG	1
L75403	Polished brass straight LPG	1

## Log Lighter Keys and Accessories

- 1/4" and 5/16" drives on keys



PART NO.	DESCRIPTION	MATERIAL	CTN QTY
L75019	1/4"x 3"	Brass	200
L75020	5/16"x 3"	Brass	200
L75021	1/4"x 6"	Brass	240
L75023	5/16"x 6"	Brass	240
L75022	1/4"x 12"	Brass	100
L75024	5/16"x 12"	Brass	100



PART NO.	DESCRIPTION	MATERIAL	CTN QTY
L75017	1/4"x 3"	Die cast zinc	250
L75018	5/16"x 3"	Die cast zinc	250

### Close Nipple Orifices



PART NO.	DESCRIPTION	CTN QTY
L75015	7/64" Orifice for natural gas	1
L75016	5/64" Orifice for LP gas	1

F